



Assessing the Economic, Environmental and Socio-Cultural Impacts of Tourism in Almora, Uttarakhand

Dr. Bhawana Mahara Rautela

Lecturer Geography, Education Department Uttarakhand, India

Abstract

Tourism has emerged as one of the fastest-growing sectors contributing significantly to regional economic development, particularly in hill regions. The district of Almora in Uttarakhand is widely known for its scenic beauty, cultural heritage and religious significance, attracting a large number of domestic and international tourists every year. The present study examines the economic, environmental and socio-cultural impacts of tourism on the local community in Almora district. The study is based on primary data collected from 200 host community members across five major tourist destinations Almora, Ranikhet, Dwarahat, Shetlakheth and Manila using structured questionnaires, field observations and interviews. The findings reveal that tourism has generated employment opportunities, improved infrastructure and increased income levels, thereby enhancing the standard of living of local residents. However, tourism development has also resulted in environmental challenges such as pollution, traffic congestion and pressure on natural resources. Furthermore, socio-cultural changes, including shifts in traditional lifestyles and cultural practices, have been observed. The study highlights the need for sustainable tourism planning to balance economic benefits with environmental conservation and cultural preservation in the region.

Keywords: Tourism, Economic Impact, Environmental Impact, Socio-Cultural Impact, Conservation, Sustainable Tourism, Almora District

1. Introduction

Tourism is an important component of the service sector and has become a major source of income and employment in many regions of the world. In India, tourism contributes significantly to economic development, regional growth and cultural exchange. The state of Uttarakhand, popularly known as the "Land of Gods," is endowed with rich natural landscapes, biodiversity and cultural heritage, making it a prominent tourist destination. Among its districts, Almora holds a unique position due to its scenic beauty, pleasant climate, historical temples and vibrant traditions. Tourism in Almora has developed rapidly over the past few decades, leading to significant transformations in the local economy, environment and society. The economic benefits of tourism are evident in the form of employment generation, increased income and development of infrastructure such as roads, hotels and communication facilities. Local communities have increasingly engaged in tourism-related activities, including homestays, handicrafts and guiding services, which have enhanced their livelihood

opportunities. Despite these benefits, tourism development also brings certain challenges. Environmental degradation, including soil erosion, waste disposal problems and depletion of natural resources, has become a growing concern in tourist areas. Furthermore, socio-cultural impacts such as changes in traditional lifestyles, commercialization of culture and migration patterns have also been observed. These impacts highlight the need for sustainable tourism planning and management in the district. Therefore, understanding the economic, environmental and socio-cultural impacts of tourism is crucial for promoting balanced and sustainable development in Almora district.

2. Review of Literature

Keeping the objectives of the present study in view, the literature reviews have been presented under the following category:

Heng and Low (1990) used input-output methodology to analyze the economic impact of Singapore's tourist industry and to evaluate its prospects for development. The overall impact has been precise and current plans for tourism promotion are in the right direction.

Ijeomah (2012) analyzed the impact of tourism on livelihood, various prevailing impacts of different tourism sites and activities of communities in Nigeria.

Gill and Singh (2013) studied the socio-economic impact of tourism in Pithoragarh and the study showed the impact of infrastructural facilities with the aid of tourism. It is found that these facilities are affected by tourism. However, roads become a hindrance in the path of development due to the disaster and undulating terrain. Keeping the view of the high relevance of modern tourism catering to significant tourist traffic, various types of better facilities for accommodation, transportation, recreation, and some tourism-related aspect should be planned at the tourist places for the need and comforts of the tourist.

Singla (2014) studied the socio-cultural impact of tourism in Jaipur City. The result shows that the positive impact was more opportunities for learning and increased community participation that improves the overall city's image. While on the other hand, the most strongly perceived negative ones are the pressure on civic amenities and the deterioration of cultural resources as passive tourism in the city.

Venkatesh and Michel (2016) studied the impact of tourism on India. They found the positive impacts are generating income, source of foreign income, development of infrastructure, and regional development and the negative impacts are undesirable social and cultural change, adverse effects on the environment and ecology, import leakage, etc.

Mythili and Jayprakash (2017) have studied the significant factors that attract tourists to Tamilnadu's Udhamangalam area and described the positive and negative factors. Positive factors were natural and scenic beauty, climate, sightseeing places, and dense forests. The negative features included poor road connectivity and parking facilities.

Venugopalan et al. (2017) have examined the economic, environmental, and socio-cultural aspects of tourism in the Kerala region and given a detailed description of each aspect's positive and negative impacts.

Chen et al. (2018) have focused on the impact of tourism on the local community. They identified five types of livelihood capital assets: Natural, Physical, Human, Financial, and Social, and described their importance for developing sector-based tourism.

Gazta (2018) studied the environmental impact of tourism and found that the Natural environment and Tourism can co-exist and benefit one another if the tourism industry is willing to contribute to the conservation of the natural environment.

Jasrotia and Sharma (2020) have focused on sustainable tourism development in Uttarakhand state of India by understanding climate change's consequences on the local environment with relevance to both livelihood and tourism. This research communication also brings forth the change in the current living situation and related youth migration observed in the Uttarakhand state of India due to sinking

tourism. One of the fastest and biggest growing sectors today is tourism which has also been noted as the fastest-growing industry with significant environmental, cultural, social, and economic effects. Another relevant change observed in the last decade, as per the survey and interview, is the migration of the youth population to nearby states, especially New Delhi, for better growth opportunities. Sustainable tourism is a significant concern for achieving sustainable development in Uttarakhand state.

Dhasmana and Bhandari (2022) explained that hill towns are popular tourist destinations as they are famous for their natural beauty and distinguishing cultural traditions. Despite being a major tourist attraction, there is a significant problem of out-migration from some states. Uttarakhand is the youngest among the Himalayan hilly states. The paper aims to study the tourism potential and explore its associated challenges in the Almora district of Uttarakhand to derive key indicators from helping improve tourism growth and promote local heritage. It attempts to analyze whether the identified indicators directly influence employment opportunities and revenue generation.

3. Objectives of the Study

1. To analyze the economic impact of tourism on employment generation and income levels in Almora district.
2. To examine the environmental impact of tourism on natural resources, biodiversity and waste management in the region.
3. To assess the socio-cultural impact of tourism on local traditions, lifestyle and cultural heritage of the people of Almora district.

4. Study Area

The study area is located in and around the hill district of Almora. The district is located in the eastern part of Uttarakhand with a latitudinal extend of 29° 59' N and a Longitudinal extend is 79° 65' E. It is surrounded by the districts of Nainital to the south, Pithoragarh to the east, Garhwal Division (Pauri district) to the west, and Bageshwar to the north. Almora district has a total area of 3139 sq. km, .of which around 41.70% is under forest area. The snow-covered Himalayas provide the backdrop to the charming town of Almora. The district is also known for its scenic landscape, rich forests and wildlife, spiritual heritage, beautiful landscapes, handicrafts, and hill cuisine. It is an important center for the art and culture of the Kumaon region. For the questionnaire-based study, I selected five major tourist destinations: Almora, Ranikhet, Dwarahat, Shitlakheth, and Manila.

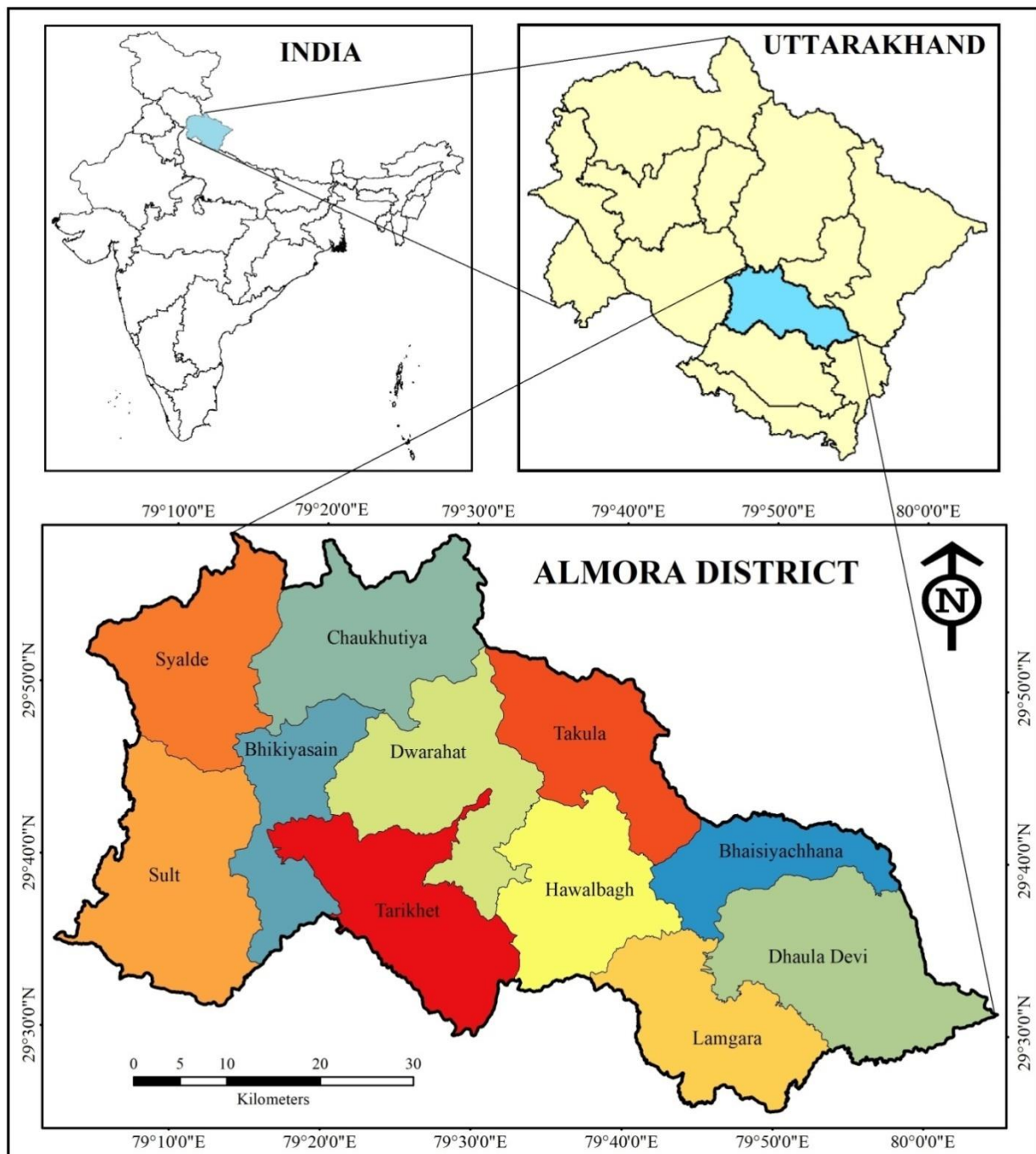


Figure: 1.1: Study Area

5. Limitations of the Study

1. The study is limited to selected tourist destinations in Almora district.
2. The sample size is restricted to 200 respondents.
3. The findings are based on perceptions of respondents and may involve subjective bias.
4. Seasonal variations in tourism activities were not fully examined in the study

6. Research Methodology

The data and information required to interpret different research parameters has been obtained from primary and secondary data and existing reports of relative line departments. A survey and questionnaire-based study has been conducted in the major tourist destination of Almora. The respondents for the study consist 200 host communities. The respondents were selected conveniently from the sample destination by giving due weightage to all the categories. As all the destinations have equal Significance, the selected samples were equally distributed, 40 host communities from each destination were selected.

The primary destinations are Almora, Ranikhet, Dwarahat, Shetlakheth, and Manila regions. The Economic, Socio-cultural and environmental impact of tourism in the different sector has been generated through primary sources using exclusively designed questionnaires, Observation and discussion with tourists, Government Authorities and local people.

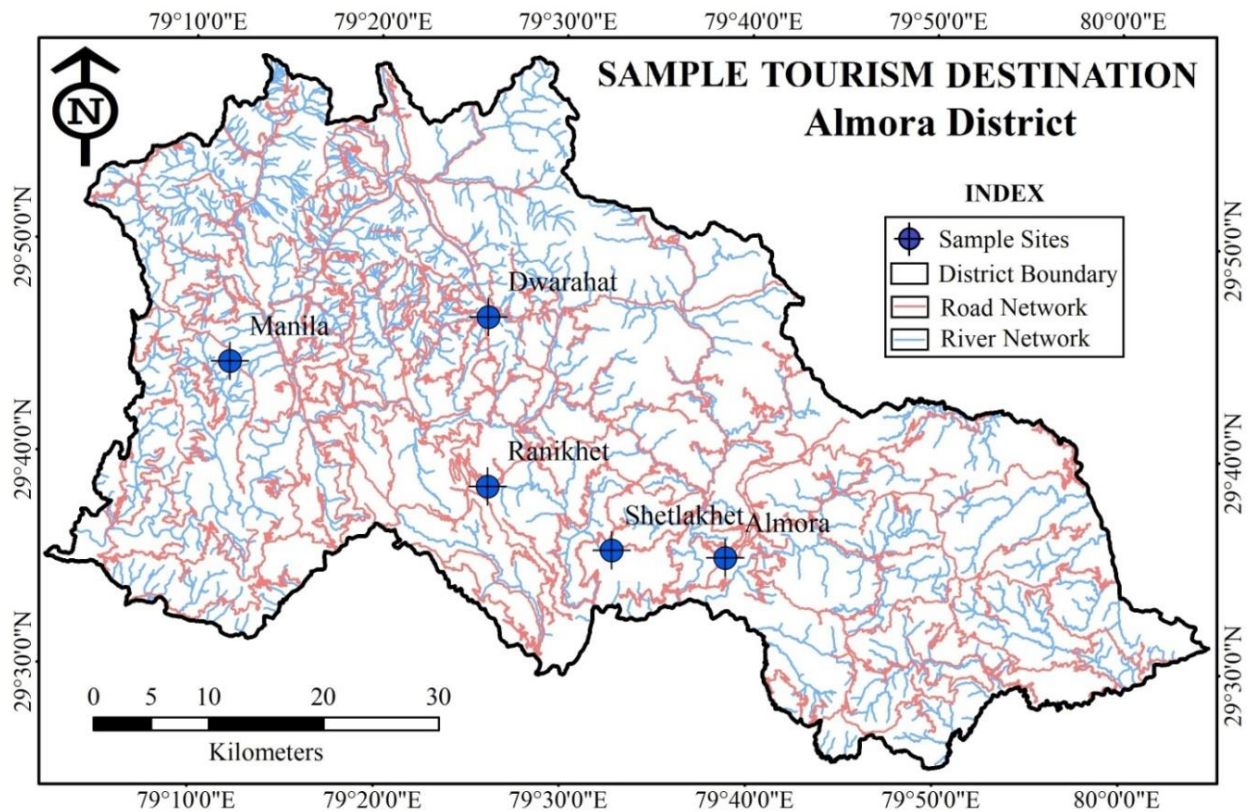


Figure: 1.2: Sample Tourism Destination

7. Result and Discussion

Economic Impact of Tourism

The destination's economy is significantly impacted by tourism. The major positive economic impact of tourism is that tourism increases livelihood opportunity, tourism increases the living standard of the local community, tourism motivates new ventures, tourism improves infrastructure, tourism develops nearby area, and tourism increase foreign exchange. However, many hidden costs of tourism can harm the host community. Tourism's adverse economic impact is increasing the cost of living, the price of land and houses, the degradation of amenities, etc.

Table-1.1: Economic Impact of Tourism

Impacts	Agree	Disagree	No Opinion	Total	P- Value	Significant Level
Tourism increases livelihood opportunity	151 (75.5)	43 (21.5)	6 (3)	200 (100)	.0256	Significant
Tourism increases the living standard of local community	136 (68)	58 (29)	6 (3)	200 (100)	.0149	Significant

Tourism motivates new venture	141 (70.5)	40 (20)	19 (9.5)	200 (100)	.0214	Significant
Tourism improves infrastructure	125 (62.5)	61 (30.5)	14 (7)	200 (100)	.0327	Significant
Tourism develops nearby area	174 (87)	19 (9.5)	7 (3.5)	200 (100)	.0167	Significant
Tourism increases foreign exchange	144 (72.5)	40 (20)	16 (8)	200 (100)	.000	Significant
Tourism increases the cost of living	171 (85.5)	24 (13)	5 (2.5)	200 (100)	.000	Significant
Tourism increases the prices of land & houses	186 (93)	11 (5.5)	3 (1.5)	200 (100)	.003	Significant
Degradation of amenities	98 (49)	84 (42)	18 (9)	200 (100)	.853	Not Significant

Source: Field Survey

- (i) Majority of the local people agreed that tourism increases livelihood opportunity, increases the living standard, motivates the new ventures and increase foreign exchanges.
- (ii) A large portion of the local population believes that tourism enhances the community's infrastructure.
- (iii) A greater than three-quarters of the community believes that tourism develops a nearby area by setting up new hotels, lodges and resorts.
- (iv) The majority of the host community firmly concurs that tourism raises living expenses and the cost of real estate in the area.
- (v) Almost 50% of the community believed that tourism causes amenities to deteriorate.

Environmental Impact of Tourism

The physical environment is the foundation of tourism. A healthy climate, unique landscape, the vegetation and animals of a specific area influence promoting tourism. It can generate both positive and negative impacts.

Table-1.2: Environmental Impact of Tourism

Impacts	Agree	Disagree	No Opinion	Total	P-Value	Significant Level
Tourism leads to pollution	174 (87)	20 (10)	6 (3)	200 (100)	.0147	Significant
Tourism leads to deforestation	83 (41.5)	109 (54.5)	8 (4)	200 (100)	.525	Not Significant
Tourism damage biodiversity	135 (67.5)	56 (25)	9 (3)	200 (100)	.038	Significant
Tourism increases awareness about environment	157 (78.5)	39 (19.5)	4 (2)	200 (100)	.299	Not Significant
Tourism improves the quality of public service	165 (82.5)	29 (14.5)	6 (3)	200 (100)	.000	Significant
Tourism generates income for environment conservation	182 (91)	15 (7.5)	3 (1.5)	200 (100)	.002	Significant
Tourism increases traffic jam	184 (92)	15 (7.5)	1 (0.5)	200 (100)	.001	Significant

Source: Field Survey

- (i) Regarding tourism's effects on the environment, a sizable section of the local populace believed that it worsened traffic, increased pollution, and harmed biodiversity.
- (ii) Majority of the local community expressed the opinion that tourism increases awareness about the environment and also generates sufficient income for environment conservation.
- (iii) Almost three-quarters of the local population believed that tourism raises the standard of public service.
- (iv) A majority of the community believed that tourism contributes to deforestation..
- (v) According to the majority of the host community, tourism raises the standard of public service.

Socio-cultural Impact of Tourism

Tourists bring money to a tourist spot and a lifestyle that shows through their dress, food, carefree attitude and habits. Sometimes their lifestyle tempts the host community to adopt a similar lifestyle (Jreat, 2002). The ways that tourism influences modification in the value system, moral principles, traditional rituals, and community organization are known as the socio-cultural effect of tourism. (Mathieson,1982)

Table-1.3: Socio-cultural Impact of Tourism

Impacts	Agree	Disagree	No Opinion	Total	P-Value	Significant Level
Tourism promotes traditional art & culture	192 (96)	7 (3.5)	1 (0.5)	200 (100)	.018	Significant
Tourism conserve historical building	187 (93.5)	12 (6)	1 (0.5)	200 (100)	.161	Not Significant
Tourism increases cultural interaction	117 (58.5)	75 (37.5)	8 (4)	200 (100)	.680	Not Significant
Tourism preserve traditional knowledge	158 (79)	40 (20)	2 (1)	200 (100)	.188	Not Significant
Tourism changes in culture	139 (68.5)	52 (26)	9 (4.5)	200 (100)	.000	Significant
Tourism leads to degradation of local language	149 (74.5)	48 (24)	3 (1.5)	200 (100)	.000	Significant
Tourism leads to drug use & crime	126 (63)	71 (35.5)	3 (1.5)	200 (100)	.078	Significant

Source: Field Survey

- (i) A sizable portion of the host community believed that tourism conserves historic structures and encourages traditional art and craft.
- (ii) It turns out that half of the local populace believed that travel fosters cross-cultural exchange and protects traditional knowledge.
- (iii) A significant portion of the host population believes that tourism degrades the local language and alters the local culture.
- (iv) A significant proportion of the populace also believes that drug usage and criminality are caused by tourists.

8. Conclusion

Tourism is a dynamic and multifaceted industry that plays a crucial role in the economic, social and cultural development of region worldwide. Examining the economic impact reveals that tourism raises living standards and livelihood options, promotes new business endeavors, upgrades infrastructure, revitalizes surrounding communities, and expands opportunities for foreign exchange earnings. Additionally, it has been observed that tourism raises living expenses, drives up the cost of real estate and homes, and deteriorates facilities. Investigating the effects on the environment reveals that tourism raises environmental consciousness, provides funding for environmental protection, and enhances the standard of public services. It is also revealed, though, that tourism contributes to pollution, deforestation, harm to biodiversity, and worsening traffic congestion. It becomes clear from analyzing the socio-cultural impact that tourism fosters traditional craft and art, protects historical structures and social interaction, and upholds

traditional knowledge and cultural variety. On the other hand, it is said that drug use, linguistic deterioration, and cultural shifts are caused by tourism.

9. Policy Implications and Suggestions

1. Promote eco-friendly tourism practices to minimize environmental degradation.
2. Strengthen waste management and sanitation facilities in tourist destinations.
3. Encourage community participation in tourism planning and decision-making processes.
4. Develop infrastructure in a sustainable and environmentally responsible manner.
5. Provide training programs for local communities to enhance tourism-related skills.
6. Preserve traditional culture and heritage through awareness campaigns and government support.

References

1. Dha Chen B., Qui, Z., Usio, N. and Nakamura, K. (2018). Tourism impact on rural livelihood in the sustainability of an aging community in Japan. *Sustainability*, Vol.10.
2. Dasmana, R., & Bhandari, S. (2022). Tourism potential and challenges in hill regions of Uttarakhand. *Journal of Mountain Studies*, 14(2), 45–58.
3. Gazta, K. (2018). Environmental impact of Tourism. *AGU International Journal of Professionals Studies and Research*, Vol.6, pp. 7-17.
4. Gill, A., & Singh, K. (2013). Socio-economic impact of tourism in Pithoragarh district. *Indian Journal of Regional Development*, 9(1), 23–31.
5. Heng, T. M., & Low, L. (1990). Economic impact of tourism development in Singapore. *Tourism Economics*, 5(3), 215–228.
6. Ijeomah, H. M. (2012). Impact of tourism on livelihood and community development. *International Journal of Tourism Research*, 8(2), 101–110.
7. Jasrotia, A., & Sharma, R. (2020). Sustainable tourism development in Uttarakhand: Issues and challenges. *Journal of Environmental Studies*, 12(1), 67–75.
8. Jreat, M. (2003): *Tourism in Himachal Pradesh*, Indus Publishing Company, New Delhi, pp. 194
9. Mathieson, A., & Wall, G. (1982). *Tourism: Economic, Physical and Social Impacts*. London: Longman, pp. 133.
10. Mythili, R., & Jayprakash, R. (2017). Tourist attraction factors in hill stations. *Journal of Tourism and Development*, 10(2), 55–63.
11. Rautela, B.M. & Joshi, D.N. (2022). Community Perception Towards Sustainable Tourism in Almora, Uttarakhand. *International Journal of Novel Research and Development*, 8(6), 534-545.
12. Singla, M. (2014). Socio-cultural impact of tourism in urban destinations. *International Journal of Tourism Research*, 6(1), 33–40.
13. Venkatesh, S., & Michel, D. (2016). Tourism development and its socio-economic impacts in India. *Asian Journal of Tourism Research*, 11(3), 89–97.
14. Venugopalan, R., Kumar, P., & Nair, S. (2017). Economic and environmental aspects of tourism in Kerala. *Journal of Sustainable Tourism*, 15(4), 120–134.