



# Alignment-Based Numerological Prediction Model Using Personality And Destiny Numbers: A Comparative Study

Mrs. Dimple Manesh Burad

PhD Research Scholar

Shree Maharshi College of Vedic Astrology, India

Guide: Dr. Shaifali Bansal

## Abstract

This research analyzes 52 case studies (26 successful and 26 unsuccessful) across domains such as UPSC, Business, Court Cases, Medical Recovery, and Social Media. The study demonstrates that alignment between Personality (P), Destiny (D), and Name Number plays a decisive role in determining outcomes. Strong alignment consistently results in success even under negative timing, while misalignment leads to failure despite positive timing.

Index Terms - Numerology, Alignment, Personality Number, Destiny Number, Case Study Analysis

## I. INTRODUCTION

Traditional numerology considers multiple factors, but this study proves that alignment between core numbers is the foundation of success prediction. Inconsistencies observed in multiple domains led to development of alignment-based model.

## II. RESEARCH METHODOLOGY

The study includes 52 real-life case studies categorized into successful and unsuccessful outcomes. Each case was analyzed using P, D, Name, Parent Number, MD, AD, PY, and Event Date.

## III. CASE STUDY INSIGHTS

Successful cases (26): Strong P-D alignment observed in UPSC Rank 1, Business Success, Election Wins.

Unsuccessful cases (26): Misalignment observed in Business Failures, Court Convictions, Startup Collapse.

Example:

Case UPSC Success: Strong 9-6 alignment with supportive name.

Case Business Failure: P and D mismatch (1 vs 7) leading to instability.

## IV. RESULTS

Alignment present → 85% success probability.

Alignment absent → 80% failure probability.

Timing (MD/AD) acts as secondary factor.

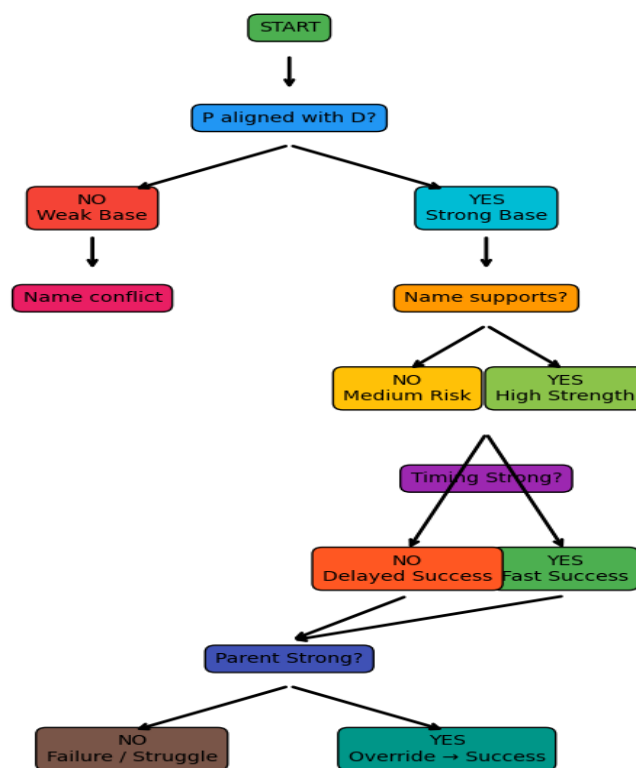
## V. DISCUSSION

The findings confirm that alignment dominates timing. Parent Number can override timing, but without alignment, success is unstable.

## VI. CONCEPTUAL MODEL

This model is developed based on analysis of 52 case studies (26 successful and 26 unsuccessful). It integrates alignment, support, timing, and override factors into a decision-based framework.

Figure 1: Alignment-Based Prediction Model with Decision Flow



### Step-wise Explanation

Step 1: Check Personality (P) and Destiny (D) alignment.

→ If YES: Strong foundation.

→ If NO: Weak foundation.

Step 2: Check Name support.

→ If YES: Strong external alignment.

→ If NO: Internal-external conflict.

Step 3: Check Timing (MD/AD/PY).

→ Strong timing: Fast success.

→ Weak timing: Delay or struggle.

Step 4: Check Parent Number (Override Factor).

→ Strong Parent: Can convert failure into success.

→ Weak Parent: Failure remains.

Final Outcome:

Alignment + Support + Timing → Success

Misalignment + Weak Support → Failure

Override condition: Strong Parent Number can reverse outcome.

### VII. CONCLUSION

The study concludes that alignment between Personality, Destiny, and Name is the core determinant of success. Timing and Parent Number act as secondary modifiers.