



CITYSWIPE WEB APPLICATION

¹Mr.Prasad Prakash Gurav, ²Mr.Nilesh Navnath Khamkar, ³Mr.Yash Ashok Karanjavkar, ⁴Mr.Chirag Mahendra Mohire, ⁵Mr. Laxman S. Naik*

¹²³⁴Student, ⁵Assistant Professor

¹²³⁴⁵Department of Computer Engineering, Rajendra Mane College of Engineering and Technology, Ratnagiri, India, pin code: 415804

Abstract: CitySwipe is a web application for hard skill working people to grow up their business and popularize it for more economical profit. “Incremental” software development model is finalized for overall engineering of this platform with the C#.Net Model View Controller technology. It includes supporting sub systems for special man skills like providing material, publishing portfolio of their past works and reach to those who want same services. Advertisement platform for local jobs and events within city will also be implemented in it. For maintaining better user experience different sorting techniques, searching algorithms, business growth strategies etc. features are being designed.

Keywords: Service provider, Advertisement.

I. INTRODUCTION

In today's world, so many people are working in various professions and can implement various business strategies for the progress and economic growth of day to day need. City Swipe is really good platform for such hard skill and soft skill professional those own start-up businesses. Cityswipe is developed using C#.Net Model View Controller web app, and HTML, CSS, JavaScript technologies with MS SQL server. Software Requirement Specification document is formed and according to that modeling is created for implementing this platform with the help of Incremental software development model. This platform has three main topics including special mans, shopkeepers, job and events advertisements which indicates the solution.

Everyone who wants services from the special man can enter into platform being a user by registration. All the special mans, their portfolio, their own design products and local advisement related to jobs are displayed to him or her after successfully login by verifying the One Time Password. Client can sent request to any special man for getting service. User login to cityswipe web application with tab user can access to services or can be member to provide such a services. Once the request is accepted by special man further process is carried out by person to person call or face to face meeting. Also, user can see list of all products created by other special mans and he can buy them.

To become special man or shopkeeper the user can go in profile and clicking on button starts the process. After becoming special man the user will get a dashboard related to his skill. In this dashboard the special man can add his portfolio of past work then he will add his own designed products for selling. Special man has a feature to raise request for getting second hand material. That will be sent as notification to other same type of special mans. Special man have one sub system which is analyze the history of purchased and trending products using min-max like algorithms and help them to take decision for the manufacturing of it Similarly, shopkeeper will get a dashboard to create his online shop where he can add material products which are necessary for the work of special mans.

Special mans can buy this material. Admin dashboard is also developed for admin related jobs. Advertisement related to jobs and events will be added by admin. For giving advertisement publisher need to request and upload data to the admin. Admin will verify and validate that the advertisement is safe, true

and legal and then publish it on the same platform. The overall features and marketing strategies implemented on this platform are very impactful for the special men, shopkeepers and users.

II. RESEARCH METHODOLOGY

Admin who is responsible for handling login authentication and adding/deleting accounts of users/special men. User registration and authentication, Managing user profiles and accounts.

Users first log in to the form, then they will send a request to the special man after that special man accepts/declines the request. Special men accepted the request then users contacted to the special men.

Special men first log in to the form, and they will view the requests from the users. The special men may schedule a consultation or site visit to assess the scope of the work and provide an estimate or quote. This allows the special men to understand the user's needs and any specific requirements.

Shopkeeper is also a user, first, log in to the form, and they will view the requests from the specials menu. Specials men need of some product, and then they will be direct communication to the Shopkeeper.

Tools:

MySQL: It is a freely available open-source Relational Database Management System (RDBMS) that uses Structured Query Language (SQL). SQL is the most popular language for adding, accessing, and managing content in a database. It is most noted for its quick processing, proven reliability, ease, and flexibility of use.

Microsoft Visual Studio: Microsoft Visual Studio is a source code editor that can be used with a variety of programming languages, including HTML, CSS, .Net, C#, and JavaScript. It is based on the Bootstrap framework, which is used to develop .Net web applications that run on the Blink layout Engine.

III. MODELING AND ANALYSIS

User need to start the application and Register online. Upon successful validation user can view the available special man's at nearby place and search the products available at special men. Base on the requirement, user can post the request in application.

There is a separate provision in the application for registration of special man's, where special man's can view request and either accept or decline request. Upon successful acceptance of request special man's can do requested work and upload the completed work in application. Base on the efficiency and quality of work done, user can upload the feedback in application [7].

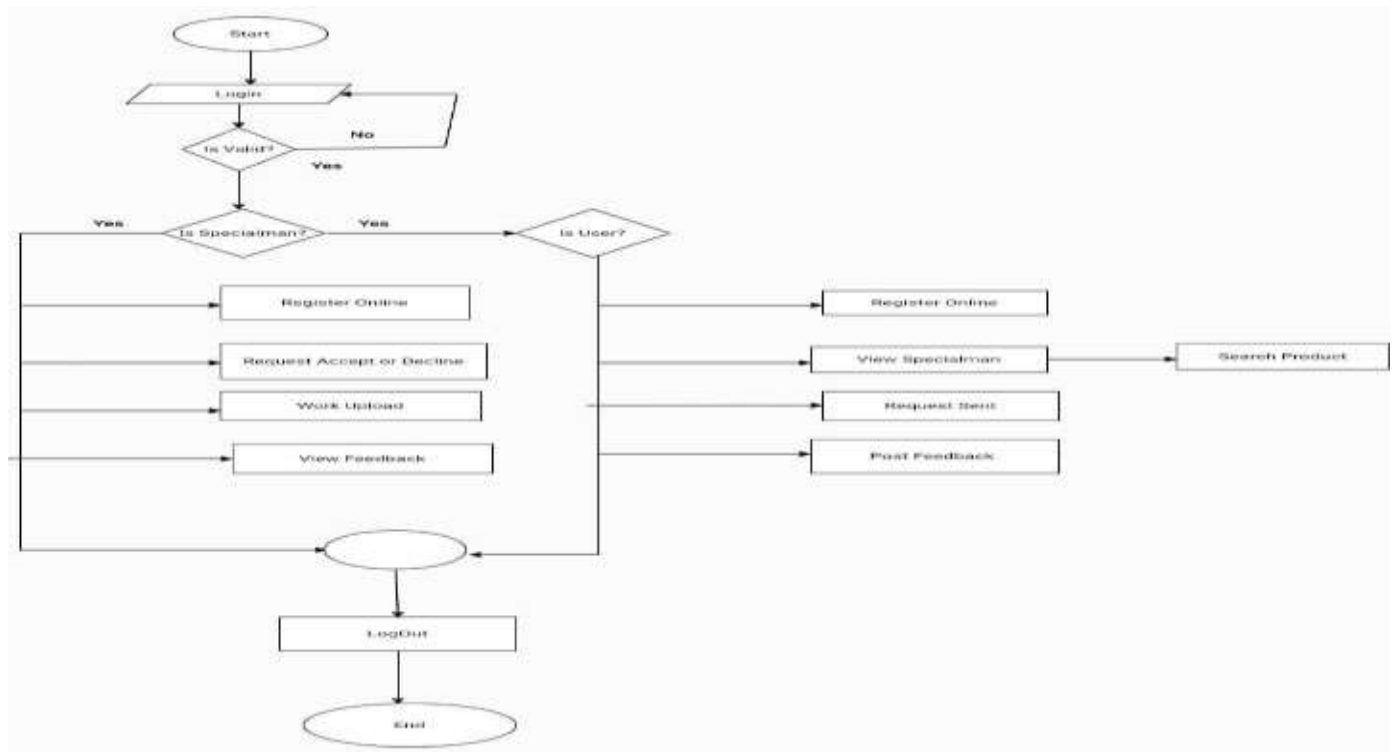


Fig. 1 Flowchart

This Flow chart illustrates the key steps in a City Swipe Web Application:

- Users are login for the registration.
- Specials men are provide their work and getting feedback from the users.
- Users are given to the request of that particular specials man and getting some response from the specials man.
- Specials man is view feedback from the users.
- Lists of Specials man are added.

Data Flow Diagram:

A Data Flow diagram for a City Swipe Web Application visually represents the interactions and flow of activities among various components or actors within the system. Here's a brief description of the key elements and their interactions in a sequence diagram for such a system:

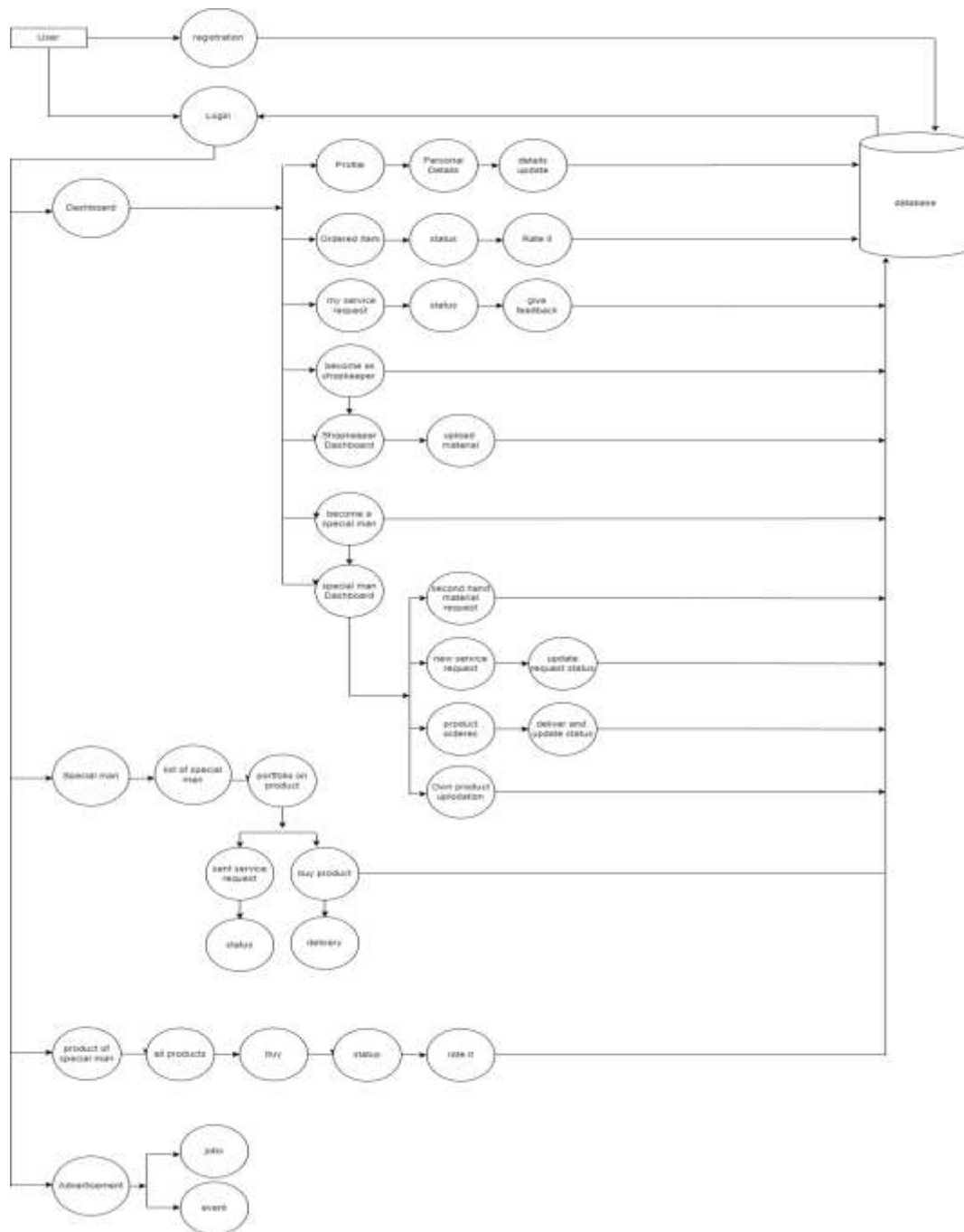


Fig. 2 DFD Diagram

User dashboard consist of personal details, list of available special man’s, products available, portfolio of product, tab to send the request and give feedback. Personal details of users include name, mobile no., email-id, password and pin code. There is a provision in the user tab to purchase and rate the product from special men. Special man’s dashboard includes available material, updating of new material and tab to accept or decline user request.

➤ **User:**

The user are getting some requirement from the special man's and also satisfy to the rating or taking feedback.

➤ **User Profile:**

The specials man check the users profile and getting some requirement from the users.

➤ **Specials man:**

Special man's skills are reached to lots of people and they are getting more profit. Specials man is around the user's location.

➤ **Product of the Specials Man:**

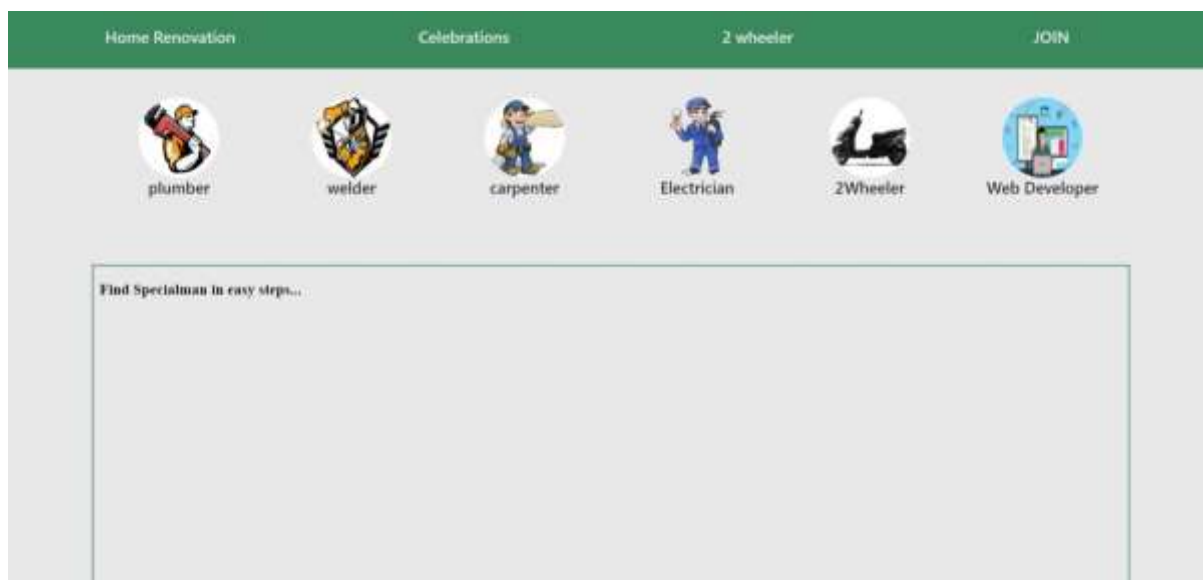
Specials man related products are also available on website and users can see all products, they can also buy it and users giving some feedback/rating of that product.

IV. RESULTS

1. Home Page:



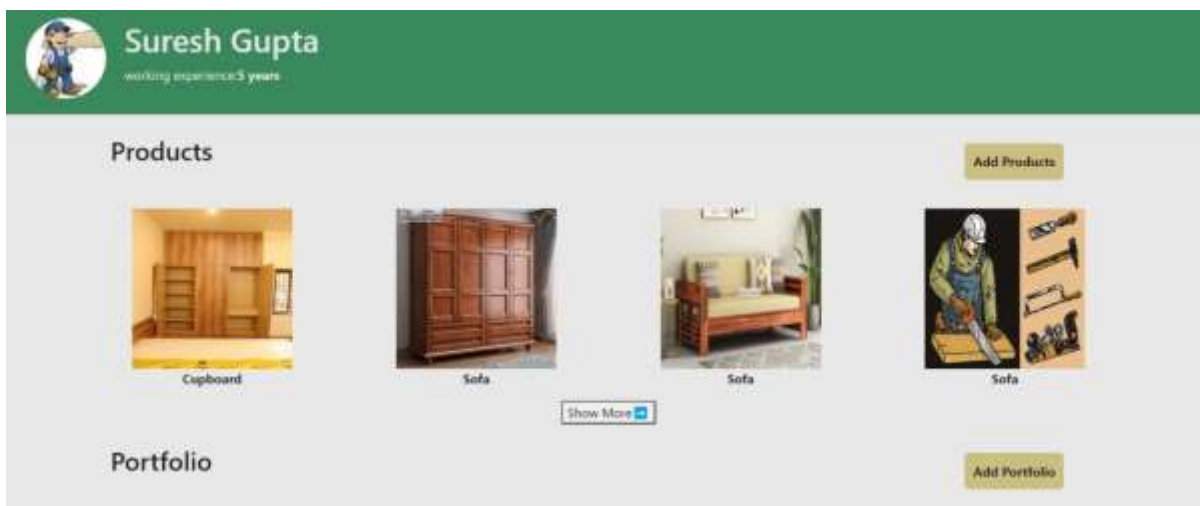
2. Find Specials man in easy step:



3. Get Specials man:



4. Specials man Portfolio:



5. Service Book:



V. CONCLUSION AND FUTURE SCOPE

Local professionals having many skills but don't have platforms to express their talent and reach huge number of customers. Even to implement their ideas they need to find tools that are more powerful but not available easily in the local market and are very costly than its manufacturing cost. Sometimes local people don't have idea about what quality products and service providers are available within their city.

Thus, to minimize drawbacks and difficulties associated with conventional professional practices, we have attempted to develop 'City Swipe'. The present Web Application is platform to bridge the gap between skilled professional and needy users. In present Web Application Special man's skills can easily reach to lots of people and they can earn more profit. Users are finding various jobs around their own city. We can add more specials man having different skill. We can add platform to achieve a great benefits for the earning money. The specials man can upload work related to their profession. Login system is all for special man and Users. Specials can provide their services to the needy users. Hence this Problem has been solved by our team.

VI. REFERENCES

- [1] Naeem Akhtar, Muhammad Idrees, Furqan-ur-Rehman, "Sorting Algorithms – A Comparative Study.", December 2016.
- [2] Ashar Mehmood, "ASH Search: Binary Search Optimization", May 2019.
- [3] Charles Arcodia, Margarida Abreu Novais, Truc H. le, "Using Job Advertisements to Advance Event Management Research.", August 2020.
- [4] Harsh Sharma, Rudra Pratap Singh, Balram Rajput, "a review paper on effect of input welding process parameters on structure and properties of weld in submerged arc welding process.", March 2020.
- [5] Mirjana Jokanovic Dajic, Aleksandra Koprivika, "The impact of the service provider and the service in different Service System.", June 2019.
- [6] Haosheng Huang, Song Gao, "Location-Based Services.", March2018.
- [7] David Havyatt, "Service Provider quality: The need for research.", February 2010.
- [8] Alexandra Twin, Caitlin Clarke, Katrina Munichiello, "Internet Service provider(ISP):What they Do and examples.", February 2024.