



EFFICIENT ROADWAY MANAGEMENT THROUGH AI-POWERED DAMAGE DETECTION AND LANE DETECTION

1. Mrs. K. ARCHANA, 2. Mr. KALLEPU SAKETH REDDY, 3. CHILAKA KOMALI, 4. MADDINENI SREE VIDHYA, 5. TALATHOTI RAMYA SRI 1. Assitant Professor, Dept. of Artificial intelligence, KKR&KSR INSTITUTE OF TECHNOLOGY AND SCIENCES, VINJANAMPADU, GUNTUR, A.P, INDIA.
2. Co-Founder, CODEGNAN IT SOLUTIONS PVT LTD, AP, INDIA.
3. STUDENT, Dept. of Artificial intelligence, KKR&KSR INSTITUTE OF TECHNOLOGY AND SCIENCES, VINJANAMPADU, GUNTUR, A.P, INDIA.
4. STUDENT, Dept. of Artificial intelligence, KKR&KSR INSTITUTE OF TECHNOLOGY AND SCIENCES, VINJANAMPADU, GUNTUR, A.P, INDIA.
5. STUDENT, Dept. of Artificial intelligence, KKR&KSR INSTITUTE OF TECHNOLOGY AND SCIENCES, VINJANAMPADU, GUNTUR, A.P, INDIA.

Abstract: The objective of this project is to improve roadway management for autonomous vehicles by implementing AI-powered damage detection and lane detection systems. The primary focus is to develop algorithms that can accurately identify road damage and detect lane markings in real-time. By leveraging machine learning and computer vision techniques, this system aims to enhance safety and efficiency on roadways. The damage detection component will help self-driving cars navigate around obstacles and hazards effectively, while the lane detection feature ensures precise vehicle positioning within designated lanes. Overall, this integrated approach aims to improve the capabilities of autonomous vehicles, contributing to safer and more reliable transportation systems.

Index Terms - YOLOv8, Canny edge detection, roadway management, AI-powered damage detection, lane detection, self-driving cars, machine learning, computer vision, real-time detection, transportation safety.

I. INTRODUCTION

The integration of artificial intelligence (AI) and autonomous systems has brought transformative changes in various domains, including transportation. Self-driving cars are a pinnacle of such innovations, and they hold the promise of revolutionizing the way we commute by providing mobility solutions that are safer, more efficient, and more convenient, we aim to improve transportation for everyone. It is crucial for the successful deployment of autonomous vehicles to have precise and reliable perception and navigation abilities in complex road environments. In this context, efficient roadway management emerges as a critical component that ensures the safety and smooth operation of self-driving fleets. We understand the importance of these tasks in ensuring safe navigation, and as such, our focus is on developing robust algorithms that can accurately identify road damage and detect lane markings in real-time. To achieve this, we will be utilizing advanced techniques such as YOLOv8 for damage detection and Canny edge detection for lane detection. Our commitment to leveraging cutting-edge methodologies reflects our determination to deliver optimal performance.

Through the utilization of machine learning and computer vision, our objective is to equip autonomous vehicles with the ability to perceive and react to their environment with heightened awareness and accuracy. By incorporating these algorithms into the vehicle's onboard systems, we enhance its capacity to navigate around obstacles and hazards and also guarantee precise positioning within designated lanes.

Deep Learning

Deep learning models are a subset of machine learning algorithms that are designed to mimic the structure and function of the human brain's neural networks. These models are characterized by their ability to automatically learn hierarchical representations of data from raw inputs. The building blocks of deep learning models are interconnected neurons arranged in layers. Each neuron receives input signals, processes them through an activation function, and produces an output signal.

YOLOv8

In YOLOv8, a convolutional neural network (CNN) is used to process input images by passing them through series of layers. These layers apply filters to detect patterns and features across different scales, enabling the network to extract meaningful information from the images. CNNs are effective for image tasks since they can learn features in a spatial hierarchy. This process enables YOLOv8 to detect objects accurately by learning and analyzing visual patterns in the input images.

Image Processing

Image Processing Techniques encompass a broad array of methods for manipulating and analyzing digital images. These techniques include operations such as filtering, enhancement, and transformation, aimed at improving image quality and extracting useful information. Canny edge detection is a popular image processing technique that utilizes a multi-stage algorithm to accurately detect edges.

Canny Edge Detection

Canny edge detection is a popular computer vision algorithm used to detect edges in images. It works by detecting abrupt changes in intensity, which often correspond to edges of objects or features in the scene. The Canny edge detector employs a multi-stage process involving Gaussian smoothing, gradient calculation, non-maximum suppression, and edge tracking by hysteresis to accurately identify edges while minimizing noise and false detections. By incorporating Canny edge detection for lane detection, we can reliably identify lane markings on road surfaces, providing crucial information for autonomous vehicles to maintain proper lane positioning and navigation.

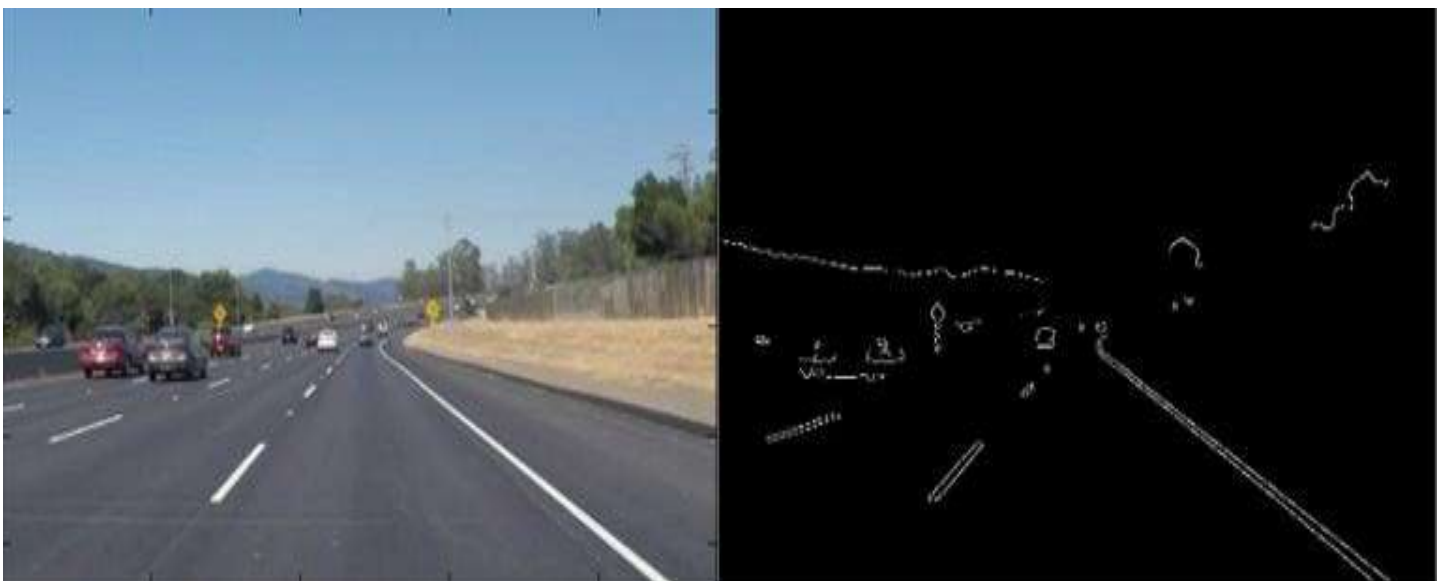


Figure 1: Lane detection with deep learning

The edge-detection version emphasizes the outlines of cars, road markings, and other elements, revealing the underlying structure of the scene.

II. RELATED WORK

Authored by Vung Pham, this paper discusses the utilization of Google Street View for collecting and labeling road damage data, emphasizing its potential as a valuable resource for training road damage detection models. Additionally, it explores various state-of-the-art object detection methods and assesses their suitability for road damage detection and classification tasks. The review highlights the contributions of existing research in this area, identifying gaps and opportunities for further investigation.

Authored by Keval Doshi, this paper introduces an ensemble model for road damage detection. The model leverages the state-of-the-art YOLOv4 object detector as its base, trained on images depicting various types of road damages sourced from Czech, Japan, and India. Through deep ensemble learning techniques, the proposed approach aims to enhance the accuracy and robustness of road damage detection systems, contributing to improved roadway maintenance and safety.

Authored by Yaxin FENG, Yuan LAN, Luchan ZHANG, and Yang XIANG, this paper presents ElasticLaneNet, a novel and efficient geometry-flexible approach for lane detection. The framework introduces a new concept of lane implicit representation, allowing it to effectively handle highly complex lane shapes such as crosses, large curves, and Y-shaped lanes. Situated within the College of Mathematics and Statistics at Shenzhen University, China, this research offers a promising solution for robust and accurate lane detection in diverse road environments.

Authored by Sapir Kontente, Roy Orfaig, and Ben-Zion Bobrovsky, this research presents CLRMatchNet, a novel approach for enhancing curved lane detection through deep matching processes. The proposed MatchNet sub-module replaces traditional label assignment methods within state-of-the-art lane detection networks, such as the Cross Layer Refinement Network for Lane Detection (CLRNet). Situated within the School of Electrical Engineering at Tel-Aviv University, this research introduces an innovative technique to improve the accuracy and robustness of lane detection systems.

III. IMPLEMENTATION

Road Damage detection:

Loading YOLO Model:

Load the YOLO model for road damage detection using Ultralytics YOLO library.

- Retrieve the class names for road damages. YOLO Detection Function:

Implement a function (yolo_detection) to perform road damage detection using the YOLO model:

Convert the image to the required format and size.

Predict road damages using YOLO.

Draw bounding boxes and labels for detected damages on the image.

Road Lane detection:

Create a pipeline function to combine image processing functions and generate lane-detected images.

The image processing functions in the Combined Detection Application work together to prepare input images for road lane detection. These functions include:

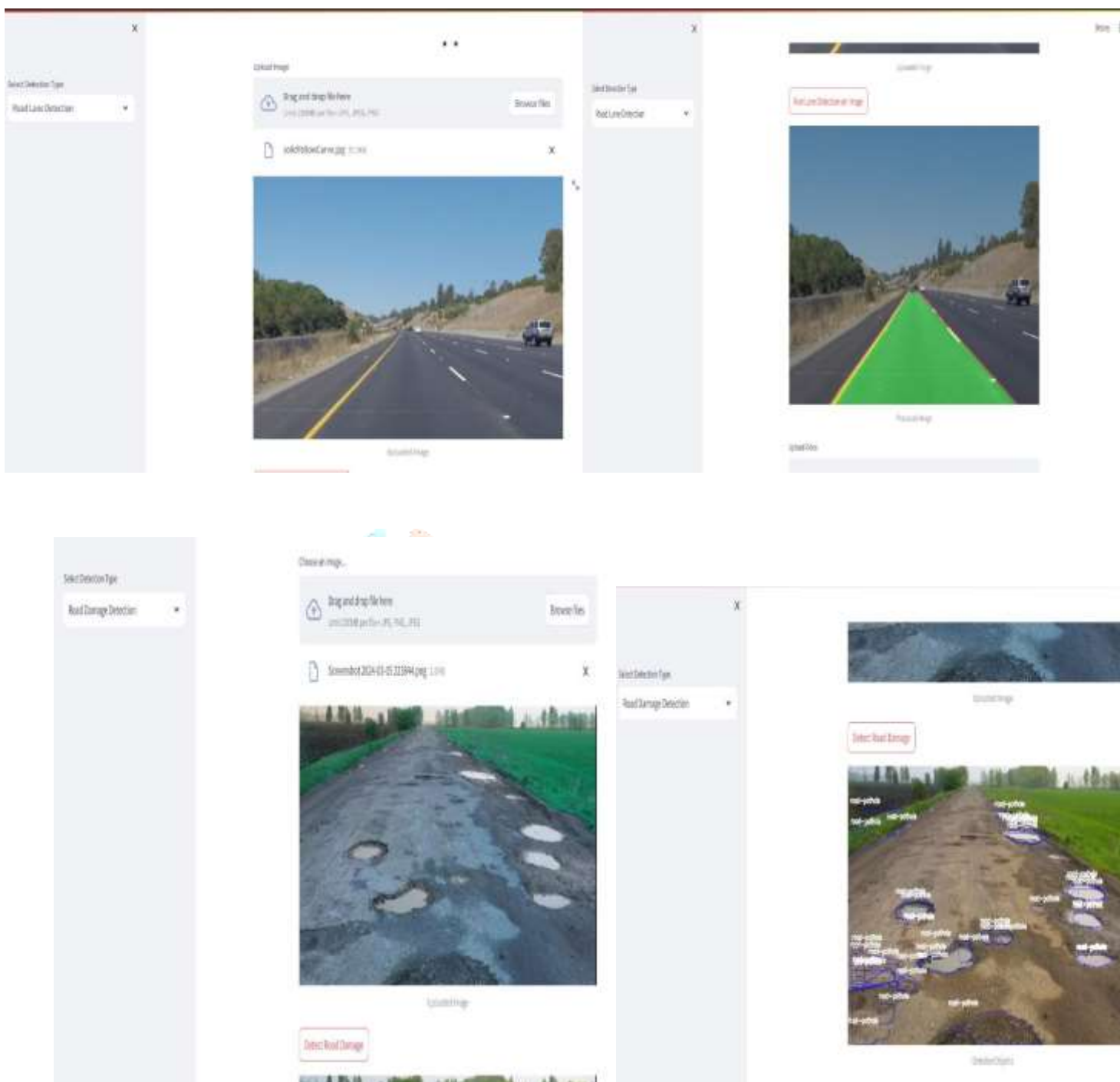
- Grayscale Conversion:** Converts the RGB image to grayscale, retaining essential intensity information.
- Canny Edge Detection:** Identifies edges in the grayscale image, highlighting potential lane markings.
- Gaussian Blurring:** Smoothens the image to reduce noise and enhance edge detection accuracy.
- Region of Interest** Masks irrelevant areas of the image, focusing only on the road region.
- Drawing Detected Lines:** Draws detected lane lines on a blank canvas for visualization.
- Slope-based Lane Line Drawing:** Extrapolates lane lines based on detected slopes, creating continuous boundaries.
- Hough Transform for Line** Identifies potential lane markings using the Hough transform in polar coordinates.

Together, these functions form a pipeline to preprocess images, detect lane markings accurately, and overlay them on the original image for further analysis.

IV. PROPOSED METHOD

The proposed system is a Combined Detection Application designed for road lane and road damage detection. It utilizes both computer vision techniques and deep learning models to accurately analyze road conditions. The system offers both image and video processing capabilities, allowing users to upload files and select the desired detection type. For road lane detection, the application utilizes techniques such as grayscale conversion, edge detection, and Hough transform to identify lane markings. Additionally, for road damage detection, the system employs YOLO object detection to detect various types of damage on the road surface. The Stream lit interface provides a user- friendly experience, enabling users to interact with the application seamlessly. The ultimate goal of the system is to improve road safety by providing a versatile tool to analyze road conditions. The Combined Detection Application integrates two functionalities: Road Lane Detection and Road Damage Detection using YOLO (You Only Look Once).

V. RESULTS



The description emphasizes the dual-color representation of the detected lanes, with green indicating one set of detected lanes and red highlighting another set. This color scheme enhances the visualization of lane detection accuracy for users. Additionally, the presence of the "Select Detection Type" option on the left side of the interface, with "Road Lane Detection" chosen, indicates the software's specific focus on lane detection. Furthermore, the availability of the "Run Lane Detection on Image" button suggests that users can conveniently initiate lane detection processing on their uploaded images with a single click. Overall, this description offers a clear understanding of the lane detection results and the functionality of the software interface.

VI. CONCLUSION

The conclusion highlights the successful integration of traditional computer vision techniques and state-of-the-art deep learning models for road lane and road damage detection, emphasizing the practical utility of the application in various real-world scenarios.

Additionally, the conclusion reflects on the effectiveness of the application in enhancing road safety, facilitating proactive maintenance measures, and contributing to the optimization of transportation infrastructure management.

It underscores the importance of accurate and efficient detection of lane markings and road damages in mitigating risks and improving overall road conditions.

Moreover, the conclusion discusses potential areas for future research and development, such as enhancing detection accuracy, optimizing computational efficiency, and expanding the application's capabilities to address evolving road infrastructure challenges. It also acknowledges any limitations encountered during the project and proposes strategies for overcoming them in future iterations.

REFERENCES

- [1] Klaus Bengler, Klaus Dietmayer, Berthold Farber, Markus Maurer, Christoph Stiller, and Hermann Winner. Three decades of driver assistance systems: Review and future perspectives. *IEEE Intelligent transportation systems magazine*, 6(4):6–22, 2014.
- [2] KT Chang, JR Chang, and JK Liu. Detection of pavement distresses using 3d laser scanning technology. In *Computing in civil engineering (2005)*, pages 1–11. 2005.
- [3] J Dharneeshkar, SA Aniruthan, R Karthika, Latha Parameswaran, et al. Deep learning based detection of pot-holes in indian roads using yolo. In *2020 international conference on inventive computation technologies (ICICT)*, pages 381–385. IEEE, 2020.
- [4] Juan Du. Understanding of object detection based on cnn family and yolo. In *Journal of Physics: Conference Series*, volume 1004, page 012029. IOP Publishing, 2018.
- [5] Qian Gao, Pengyu Liu, Shanji Chen, Kebin Jia, and Xiao Wang. Detection method of potholes on highway pavement based on yolov5. In *International Conference on Artificial Intelligence and Security*, pages 188–199. Springer, 2022.
- [6] Saksham Gupta, Paras Sharma, Dakshraj Sharma, Varun Gupta, and Nitigya Sambyal. Detection and localization of potholes in thermal images using deep neural networks. *Multimedia tools and applications*, 79:26265–26284, 2020.
- [7] Zhiqiong Hou, Kelvin CP Wang, and Weiguo Gong. Experimentation of 3d pavement imaging through stereovision. In *International Conference on Transportation Engineering 2007*, pages 376–381, 2007.
- [8] Taehyeong Kim and Seung-Ki Ryu. Review and analysis of pothole detection methods. *Journal of Emerging Trends in Computing and Information Sciences*, 5(8):603–608, 2014.
- [9] Qiang Liu, Wei Huang, Xiaoqiu Duan, Jianghao Wei, Tao Hu, Jie Yu, and Jiahuan Huang. Dsw-yolov8n: A new underwater target detection algorithm based on improved yolov8n. *Electronics*, 12(18):3892, 2023.
- [10] Mingyang Ma and Huanli Pang. Sp-yolov8s: An improved yolov8s model for remote sensing image tiny object detection. *Applied Sciences*, 13(14):8161, 2023.
- [11] Zequn Qin, Huanyu Wang, and Xi Li. Ultra fast structure-aware deep lane detection. In *Computer Vision–ECCV 2020: 16th European Conference, Glasgow, UK, August 23–28, 2020, Proceedings, Part XXIV 16*, pages 276–291. Springer, 2020.

- [12] Dongkwon Jin, Wonhui Park, Seong-Gyun Jeong, Heeyeon Kwon, and Chang-Su Kim. Eigenlanes: Data-driven lane descriptors for structurally diverse lanes. In Proceedings of the IEEE/CVF Conference on Computer Vision and Pattern Recognition, pages 17163–17171, 2022.
- [13] Lizhe Liu, Xiaohao Chen, Siyu Zhu, and Ping Tan. Condlanenet: a top-to-down lane detection framework based on conditionalconvolution. In Proceedings of the IEEE/CVF International Conference on Computer Vision, pages 3773–3782, 2021.
- [14] Xingang Pan, Jianping Shi, Ping Luo, Xiaogang Wang, and Xiaoou Tang. Spatial as deep: Spatial cnn for traffic sceneunderstanding. In Proceedings of the AAAI Conference on Artificial Intelligence, volume 32, 2018.
- [15] Guoliang Liu, Florentin Wörgötter, and Irene Markelić. Combining statistical hough transform and particle filterfor robust lanedetection and tracking. In 2010 IEEE Intelligent Vehicles Symposium, pages 993–997. IEEE, 2010.
- [16] Shengyan Zhou, Yanhua Jiang, Junqiang Xi, Jianwei Gong, Guangming Xiong, and Huiyan Chen. A novel lane detection basedon geometrical model and gabor filter. In 2010 IEEE Intelligent Vehicles Symposium, pages 59–64. IEEE, 2010.
- [17] Junhwa Hur, Seung-Nam Kang, and Seung-Woo Seo. Multi-lane detection in urban driving environments using conditionalrandom fields. In 2013 IEEE Intelligent vehicles symposium (IV), pages 1297–1302. IEEE, 2013.
- [18] Mohamed Aly. Real time detection of lane markers in urban streets. In 2008 IEEE intelligent vehicles symposium, pages 7–12. IEEE, 2008.
- [19] Ruyi Jiang, Reinhard Klette, Tobi Vaudrey, and Shigang Wang. New lane model and distance transform for lane detection and tracking. In Computer Analysis of Images and Patterns: 13th International Conference, CAIP 2009, Münster, Germany, September 2- 4, 2009. Proceedings 13, pages 1044–1052. Springer, 2009.
- [20] ZuWhan Kim. Robust lane detection and tracking in challenging scenarios. IEEE Transactions on intelligenttransportation systems,9(1):16–26, 2008.
- [21] Lucas Tabelini, Rodrigo Berriel, Thiago M Paixao, Claudine Badue, Alberto F De Souza, and Thiago Oliveira- Santos. Polylanenet: Lane estimation via deep polynomial regression. In 2020 25th International Conference on Pattern Recognition (ICPR),pages 6150–6156. IEEE, 2021.