



# “FORMULATION AND EVALUATION OF HERBAL COLD CREAM”

Divyansh Sahu<sup>1</sup>, Prerana Sahu<sup>2,3</sup>, Ayush Dubey<sup>1</sup>, Ashwary Jain<sup>2</sup>, Harish Sharma<sup>1</sup>, Gyanesh Kumar Sahu<sup>1\*</sup>

1. Rungta Institute of Pharmaceutical Sciences & Research, Kohka, Kurud, Bhilai
2. Rungta Institute of Pharmaceutical Sciences, Kohka, Kurud, Bhilai
3. Rungta College of Pharmaceutical Sciences & Research, Kohka, Bhilai

## ABSTRACT: -

Herbal cosmetics are products intended to enhance and beautify human appearance. To nourish and moisturize the skin, the current study set out to formulate and evaluate herbal cold creams that contained plant extracts, liquid paraffin as a lubricating agent, beeswax as a stabilizer, and methylparaben as an antibacterial agent by using the water in oil method. The cold cream is prepared by using the neem oil and almond oil. After the preparation of the cream, the cream was evaluated for different parameters like appearance, PH, viscosity, stability test, dye test, spreadability, and test for microbial growth. From the evaluation study, it was concluded that it is a very good attempt to formulate the herbal face pack containing naturally available ingredients like neem and almond. It was also concluded that the prepared formulation was physico-chemically and microbiologically stable, and possessed characteristics of a standard cosmeceutical formulation for skincare.

Key Words: cold cream, almond oil, rheological studies.

## 1. INTRODUCTION: -

Cosmetics are the products that are generally used to beautify the skin and also to purify the skin. The cosmetics are the word derived from Greek word – ‘kosmesticos’ which means to adorn (1). Cold cream is the water in oil emulsion. Cold cream gives the prolonged contact time in the site of application as compared to the other semisolid dosage form or formulation. They give elegance to the skin and it is not that much greasy. Due to the oil phase, it gives an emollience to the skin. The function of the cold cream is for restoring moisture to dry skin, it allows to eliminate the waste materials from the pores and also cools the body. It is easily watered washable and easy to wash away (2). They are non-irritating when applied on the skin. The water phase gives extra conservation to the skin. It gets liquefy at body temperature. It gets penetrated via the epidermis of the skin via the natural pores. More recently anti-aging creams have been manufactured which can retain younger looking skin for many years. The best cleansing agents are cleansing creams, soap and water (3). Cream is defined as semisolid emulsions which are oil in water (o/w) or water in oil (w/o) type and these semisolid emulsions are intended for external application. Cream is classified as oil in water and water in oil emulsion. It is applied on outer part or superficial part of the skin and its main ability is to remain for a longer period of time at the site of application. The function of a skin cream is to protect the skin against different environmental condition, weather and gives soothing effect to

the skin. There are different types of creams like cleansing, cold, foundation, vanishing, night, massage, hand and body creams (4). The main aim of our work is to develop a herbal cream which can give multipurpose effect, like moisturizer, reduce acne and skin irritation, reduce skin diseases like eczema, psoriasis, dry skin, wrinkles, rashes etc. and also adding glow to the face. We have used two herbal ingredients in our preparation which are Neem, Almond. Aloe Vera gel is used as a moisturizer, to reduce pimples and acne and also used for treatment of burn wounds (5). Neem is used as an antifungal and anti-inflammatory and it is also used to reduce scar, pigmentation, redness and itching of the skin. From that time the materials which are used to promoting appearances or to beautify the skin are called as cosmetics. From ancient time till now people are still using polyherbal or herbal cosmetics for the beautification of skin. Cold cream is the water in oil emulsion (7). Cold cream gives the prolonged contact time in the site of application as compared to the other semisolid dosage form or formulation. Hard lozenges: hard lozenge is generally formed using sucrose or other sugars similar to the process for hard candy confections that produce a hardened amorphous glassy material. To slow the rate of dissolution, polymers such as PEGs and HPMC may be added. Another type of hard lozenge may be made of compressed powders (8).

### 1.1 THE ANATOMY OF SKIN: -

Skin is the largest organ of the body in term of surface area and weight. It has surface area of approximately 16000cm. In adults, skin represent 8% of body weight. It is the outermost layer or tissue of the living body. Skin shows a protective mechanism from external environment. Skin can produce a favorable chemical substance named as vitamin D when skin is exposed in sunlight. The skin helps to regulate the temperature of the human body and also acts as sensory organ (9). Skin includes various cellular elements like melanocytes, erythrocytes, keratinocytes etc. It has multi-layer structures because of different components like cells and fibers.

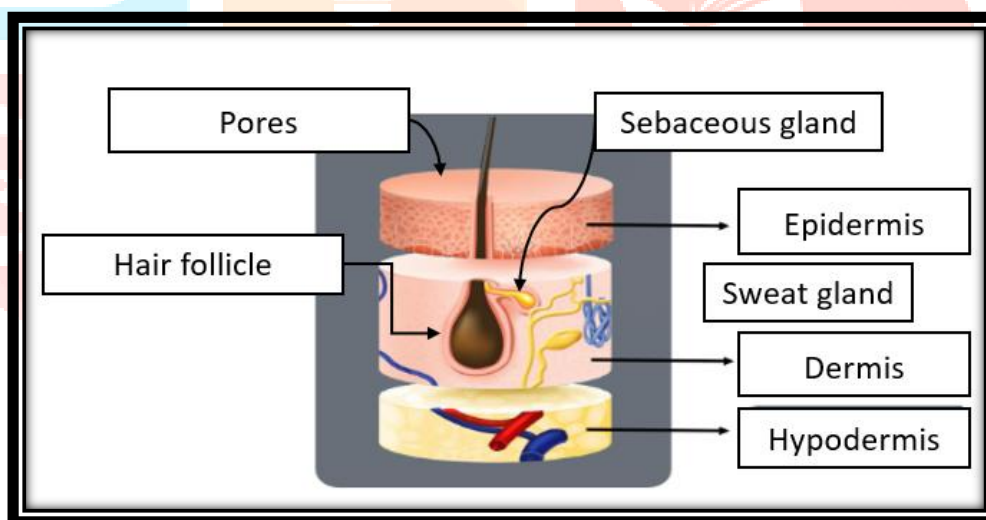


Fig no. 1.1 The layers of human skin

The skin consists of three layers: -

#### 1. The Epidermis: -

The outermost layer of the skin is called epidermis which having thickness of about 0.2mm. No veins and capillaries are located in this layer. The thickness of epidermis is depending upon the location of the body. The epidermis mainly consists two types of cells- keratinocytes and dendrites cells. It also contains other number of cells like melanocytes, Langerhans cells etc. The epidermis layer is also called as the metabolic active tissue (10)

The outermost layer is classified into five sub layers and these are

1. Stratum corneum
2. Stratum lucidum
3. Stratum granulosum
4. Stratum spinosum
5. Stratum Basale

**Stratum corneum:** The exterior sublayer of the epidermis is called as stratum corneum. It is also referred as the horny cell layer having thickness of about 8-15 $\mu$ m. The layer is of hexagonal shaped and is helpful for prevention of skin from the large amount of dehydration. It contains main component “ceramide”, which having important role in water retention.

**Stratum lucidum:** Stratum lucidum is composed as thin clear layer of dead skin cells. It is found only in areas of thick skin on the palms of the hands and soles of the feet.

**Stratum granulosum:** The layer is also called as granular cell layer having thickness of 3 $\mu$ m. It contains 2-4 layers of granular cell. The shape of the cells is flatter because the keratin fibers are increasingly filled up into the cells.

**Stratum spinosum:** It is also called prickle cell layer having thickness ranges from 50- 150 $\mu$ m. It consists of number of cells, which may differ in shape and structure.

**Stratum Basale:** Stratum Basale is composed as single layer and is the deepest and sublayer of epidermis. In stratum basale, keratinocytes are produced and shows their movement upward to the outer surface. The process of movement of keratinocytes is known as turnover. For one cycle of this process takes days and keratinocytes also changes their functions and structure. This is also called as basal cell layer and holds 8% of water in the epidermis

## 2. The Dermis: -

Most of the dermis is made up of collagen and elastin as well as fibroblasts. This layer has several functions. In the dermis, there are blood vessels and lymphatic vessels that nourish the skin and eliminate waste products or toxins. Sweat glands are present in the dermis. They create sweat through your pores, removing impurities and cooling your body. The hair follicles and the sebaceous glands, which produce the oils that make the skin soft and smooth the skinsometimes overzealously resulting in rashes and oily skin are also found in the dermis.

## 3. The Subcutaneous layer: -

The deepest layer of skin is the layer of fat that connects your bones to your muscles and bones. It goes deep that the active ingredients in your skincare products can never reach. The subcutaneous layer is like a thermostat. It protects the body and can also be used as a source of energy in a pinch. Fat also acts as a filter, protecting your muscles, bones and organs from damage. Finally, the subcutaneous layer contains additional blood vessels, nerve endings, hair follicular roots and the deepest oil-producing sebaceous glands (11)

## 1.2 Application of Herbal Cold Cream to skin: -

Despite their intended design as facial moisturizers, cold creams are actually very versatile and can be used in a number of different ways. First, one of its most popular uses is as a makeup remover. The thick oils are able to gently melt makeup and dirt away, allowing it to be removed with minimal damage, rubbing or scrubbing. Similarly, some find it effective as a primer for cosmetic foundations as it smooths the skin and allows makeup to be applied more evenly across the face. Since it removes makeup without water, Kelly says it even is a great product to take camping or on road trips where you may be away from your

bathroom sink or shower! Lastly, cold creams can also be effective as a lip balm, body lotion, or even a shaving cream. Using a cold cream on your lips helps lock in vital moisture and provide hydration throughout the day to the sensitive skin on the lips. Likewise, applying a moisturizing cold cream to your body delivers the same intense hydration that the cream is designed to provide to your face but to your arms, legs, back, and hands (13).

### 1.2.1 Cold Cream Benefits: -

The benefits of cold cream are quite simple. By design, cold cream is meant to topically moisturize the skin, so anyone looking to boost the hydration of their skin can benefit from using this product. However, those with particularly sensitive skin or dry, itchy skin will benefit the most from using it daily to improve the texture and appearance of their complexion. These effects are likely the result of the cold cream's ability to help restore the skin's effectiveness as a natural barrier to the environment, something that is lost when your skin is too dry (14)

### 1.3 Advantages of Herbal Cold Cream: -

- 1) It Prevents ageing and dehydration of skin.
- 2) As cold creams contain enough amount of water and oil, they keep skin safe from the rough environments.
- 3) They also keep skin moisturized and safe
- 4) Cold creams are designed to remove makeup and smooth the skin
- 5) Medicated cold cream is mainly used as topical pharmaceutical dosage form for the treatment of skin.
- 6) Also, provide a chemical barrier as with sun block ingredients.
- 7) As cleansing preparation to remove make
- 8) To provide an emollient effect and oily protective layer on the skin (15)

## 2. Material and Methodology: -

### Ingredients of Formulations

All the natural materials used in the present study i.e., Almond oil and neem oil from the local market, in the form of dried powder. The details of the plant material used for the formulation of cold cream are mentioned below

#### a) Almond oil

It's also anti-inflammatory and boosts immunity. Containing omega-3 fatty acids, almond oil might help you maintain healthy cholesterol levels and improve your memory. It may help lower your risk for diseases like cancer and heart disease.

#### b) Neem oil

Neem oil is a naturally occurring pesticide found in seeds from the neem tree. Neem oil is a mixture of components. Azadirachtin is the most active component for repelling and killing pests and can be extracted from neem oil. The portion left over is called clarified hydrophobic neem oil

#### c) Borax

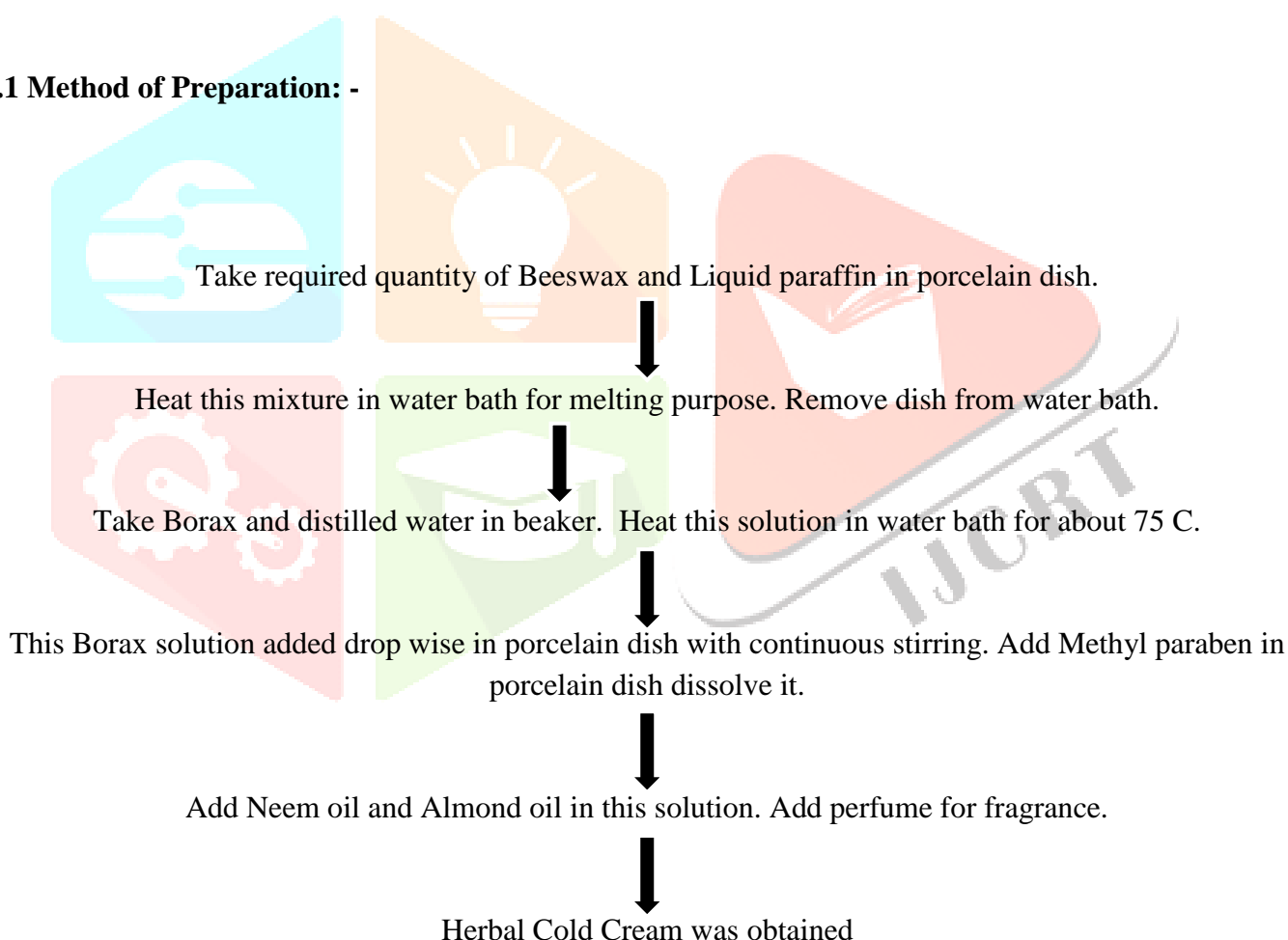
Borax, combined with wax, is used in many cosmetic products like creams, gels, and lotions. It is famously used in hand soaps to help wash off the oil or grease from the hands. Borax's alkaline nature makes it a perfect ingredient in cleansers and toners. In cosmetic products, borax is sometimes used as an emulsifier, buffering agent, or preservative for moisturizing products, creams, shampoos, gels, lotions, bath bombs, scrubs, and bath salts.

**d) Beeswax**

Ability to Protect from Irritants-Beeswax can also act as a layer of protection when applied to the skin. It can protect skin from environmental irritants and extreme weather. Promotion of Hair Growth-Beeswax not only moisturizes and soothes hair, but it can keep moisture from getting out of the hair. Beeswax can create a protective layer on the skin. It's also a humectant, which means that it attracts water.

**e) Rose water**

Rose water is especially hydrating when combined with other moisturizing ingredients, such as ceramides or glycerin. "These help to moisturize the skin, protect the skin barrier and prevent further water loss from the skin," says Allawh. However, it shouldn't replace your current moisturizer. Rose water has been used as a beauty product for thousands of years, so it's no surprise that it can improve your complexion and reduce skin redness. The antibacterial properties may help reduce acne. The anti-inflammatory properties can reduce skin redness and puffiness.

**2.1 Method of Preparation: -**

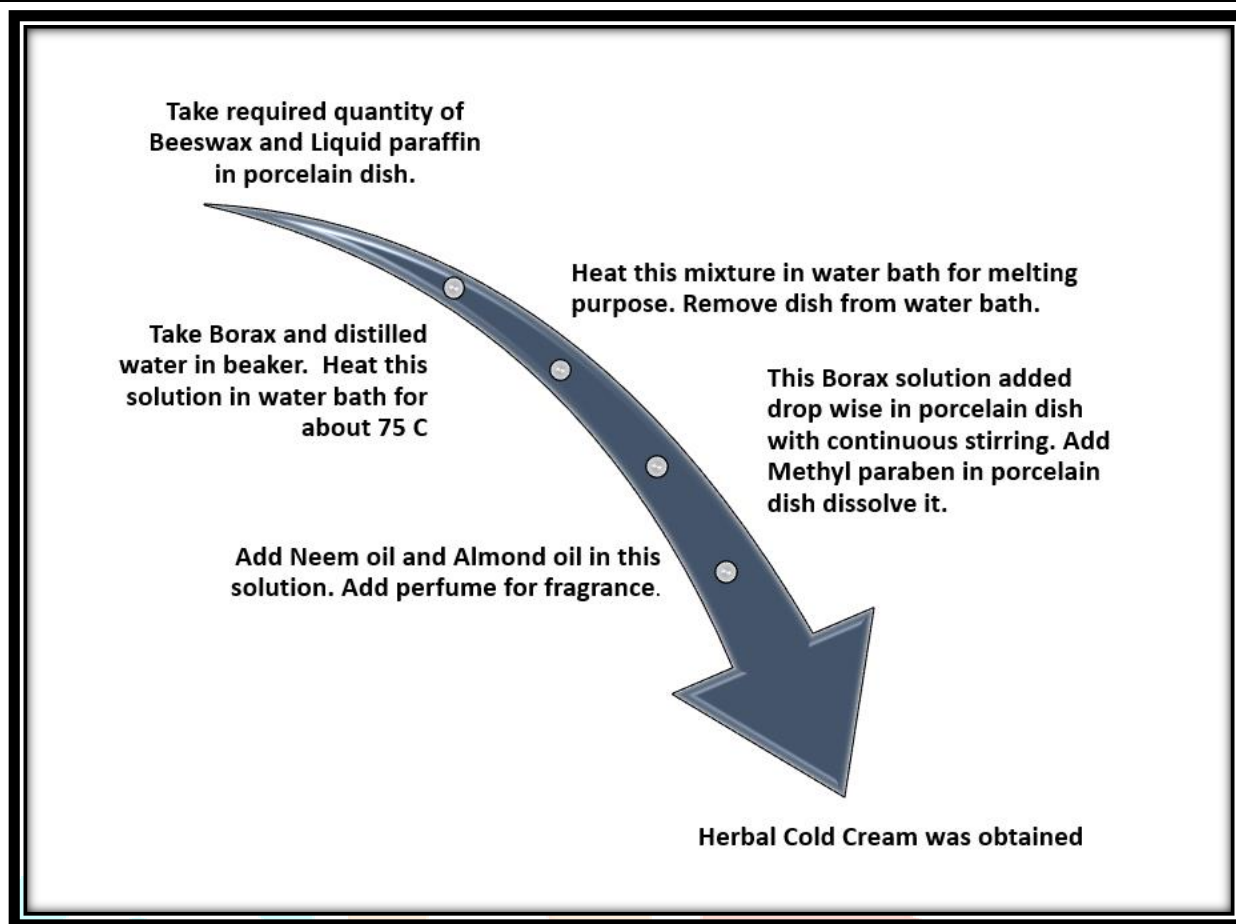


Fig no. 2.1 method of preparation

## 2.2 Composition of Herbal cold cream: -

S.no	Name of ingredient	Scientific name	Quality(gm)	Uses
1	Methyl Paraben	methyl p-hydroxybenzoic acid	0.010 gm	Antibacterial properties and Preservation
2	Borax	sodium tetraborate decahydrate	0.25gm	Stability
3	Beeswax	Apiccerana, Apis Mel, Apismellifera, ApisMellif	15gm	emulsifying agent, stabilizer
4	Liquid Paraffin	Petrolatum	50gm	Prevents skin itching and lubricating agent
5	Neem Oil	Azadirachtaindica	23gm	Prevent or even kill fungus
6	Almond oil	Prunusdulcis var. dulcis.	25gm	protective layer skin

### 3. Result and Discussion: -

Following evaluation parameters were performed to ensure superiority of prepared cold cream.

➤ Morphological Evaluation: -

Herbal cold cream was evaluated for morphological parameters showed in the Table 2. The color of formulation was yellowish. The odor of prepared formulations was pleasant and good acceptable which is desirable to cosmetic formulations. Texture and smoothness were acceptable as per requirement of cosmetic formulations.

S.no.	Parameter	Observation
1	Colour	Whitish green
2	Odor	Pleasant
3	Texture	Smooth

➤ Physicochemical Evaluation: -

S.NO.	EVALUATION PARAMETER	F1	F2	F3	F4
1	pH	7.4	6.2	7.6	6.1
2	Moisture content	2.1% w/w	1.9% w/w	1.5% w/w	2.25w/w
3	Total Ash	2.4%	2.6%	2.3%	2.2%
4	Acid insoluble ash	0.56	0.62	0.46	0.50
5	Water-soluble ash	1.3	1.4	0.8	1.5
6	Tapped density	0.62gm/ml	0.76gm/ml	0.75gm/ml	0.72gm/ml
7	Bulk density	0.74gm/ml	0.85gm/ml	0.76gm/ml	0.83gm/ml
8	Particle size	28-32µm	25-30 µm	29-33 µm	30-35 µm
9	Grittiness	Nil	Nil	Nil	Nil



Figure 3.1: - Evaluation of moisture content

➤ **Skin Permeability Test: -**

The Franz Cell system is designed to imitate the behavior of actives and formulations when applied to skin. Test sample is placed in contact with a membrane and the rate of transfer is determined by collection of the permeate on the other side of the membrane. The use of Franz diffusion cell to assess skin permeability has evolved into a major research methodology, providing key insights into the relationships between skin, drug and formulation.

The drug was easily able to penetrate into the skin.



Figure 7: - Skin Permeability Test Figure 8: - Goat Skin



#### 4. Conclusion: -

Natural remedies are more acceptable in the belief that they are safer with fewer side effects than the synthetic ones. Herbal formulations have growing demand in the world market. Herbal face packs are considered as sustaining and productive way to advance the appearance of skin. Herbal face packs or masks are used to stimulate blood circulation, rejuvenates those muscles and help to maintain the elasticity of the skin and remove dirt from skin pores. Thus, in the present work, it is a very good attempt to formulate the herbal face pack containing naturally available ingredients like neem, almond. It is suggested that the prepared formulation was physico-chemically and microbiologically stable, and possessed characteristics of a standard cosmeceutical's formulation for skincare.

#### 5. Reference: -

1. Sahu P, Nema R K. Covid-19: Pandemic in India; an update. *European Journal of Biomedical and Pharmaceutical sciences*; Vol-8, Iss-6 (June 2021): 312-320
2. Sahu P, Nema R K. Bioenhancer: An Agent for Increasing Bioavailability. *World Journal of Pharmaceutical Research*; Vol-8, Iss-6 (May 2021): 613-634
3. Sahu P, Nema R K. A Peer Review on Herbal Cosmetics and Skin Care. *World Journal of Pharmacy and Pharmaceutical Sciences*; Vol-10, Iss-7 (June 2021): 613-634.
4. Sahu P, Sahu G, Sharma H, Sahu G K. Preparation & Characterization of nutraceutical drink. *International Journal for Multidisciplinary Research*, Vol- 5, Iss 2 (March- April 2023), 2582-2160
5. Sahu P, Chandravanshi A, Bhuneshwar, Singh S, Sharma H, Sahu G K. Development of Analgesic Chewable gummy tablet for palatable drug delivery. *International Journal for Multidisciplinary Research*, Vol- 5, Iss 2 (March- April 2023), 2582-2160
6. Sahu P, Yadav S, Bhimte P, Sarparaj S, Sahu N, Sharma H, Sahu G K. Development & Characterization of Vanishing Cream. *Acta Scientific Pharmaceutical Sciences*, Vol- 7, Iss 4 (May-June 2023), 2581-5423
7. Sahu P, Bhimte P, Singh S, Sarparaj S, Sahu N, Sharma H, Sahu G K. Formulation of polyherbal soap and evaluation of its physic-chemical parameters. *Acta Scientific Pharmaceutical Sciences*, Vol- 7, Iss 4 (April 2023), 2581-5423
8. Tandi DY, Sahu P, Sharma H, Nema RK, Sahu GK. Piperine: Physicochemical Aspects for Lung Cancer. *International Journal of Biology, Pharmacy and Allied Sciences*, January 2023, 12(1): 294-304
9. Sahu P, Sahu G, Sharma H, Sahu GK. Preparation and Characterization of Nutraceutical Drink.
10. Sahu M, Choubey R, Sahu P, Mishra A. A comparative molecular docking study of *Syzygiumcumini* to understand the binding pattern with four different proteins Used for anti-diabetic activity.
11. Sahu P, Nema RK. Bioenhancer: an agent for increasing bioavailability. *World J Pharm Res*. 2021 Apr 1;10(6):613-34.
12. Sahu P, Sahu GK, Sharma H, Kaur CD. Formulation, characterization and ex vivo evaluation of epinephrine transdermal patches. *Research Journal of Pharmacy and Technology*. 2020;13(4):1684-92.
13. Sahu L, Nagwanshi P, Sahu P, Sahu A, Sahu G, Sharma H. Novel Approaches of Treatment of Cancer: Nanoparticle. *Research Journal of Pharmaceutical Dosage Forms and Technology*. 2020;12(2):115-24.
14. Nagwanshi P, Sahu L, Sahu P, Sahu A, Sharma H, Sahu G. Emphasis of Phytoconstituent in the treatment of cancer. *Research Journal of Pharmaceutical Dosage Forms and Technology*. 2020;12(3):169-77.

15. B.S., Kalpesh K. Mehta, Anshu Gupta (2016). Dispensing Pharmacy A Practical Manual (p.p. 389-399). Pharma Med Press.

