



Revolutionizing Job Searches: A College-Managed Placement Portal

¹Dr.Sathish Kumar, ²Myakala Sai Sudhir, ³Nara Adithya Raj, ⁴P Abhishek, ⁵V pooja

¹Professor, ²Student, ³Student, ⁴ Student, ⁵ Student

¹Computer Science & Engineering,

¹Hyderabad Institute of Technology & Management, Hyderabad, India

Abstract: Now-a-days it is difficult for the students for finding job openings. when a company approaches a college for placements. Then the college will send the information regarding the placements through WhatsApp but many of the students are unnoticed by this information. Because along with the important information, some information which is not necessary is also present. Creating placement portal web application which is managed by the college and accessed by the students. When colleges and universities are approached by companies for campus placements, communication often occurs through platforms like WhatsApp, which can result in an information overload. This overload not only makes it challenging for students to filter the important details but also leads to significant information being inadvertently overlooked. To address these issues, the proposed solution is to develop a user-friendly web-based placement portal, which will be administratively managed by educational institutions and accessed by students. The application will be built using web development technologies and will be designed to be scalable, secure, and user-friendly. This portal, constructed using the latest web development technologies, will prioritize scalability and security to ensure it can accommodate a growing number of users while safeguarding sensitive data. The primary goal of this project is to create a centralized platform where comprehensive information about job placements and the recruitment process is readily available, providing students with a more efficient and effective means to explore and pursue employment opportunities in their academic and professional journey. The primary objective of this project is to create a platform where detailed information about placements and recruitment process, making it more efficient and effective for students.

Keywords – Placement portal, Web Technologies ,Centralized Platform.

Introduction

In the contemporary landscape, there is a pronounced emphasis on wireless technology and efficient systems. Computers and technology have seamlessly integrated into various facets of our lives, facilitating access to a myriad of functionalities. The omnipresence of technological advancements has rendered them indispensable, making it challenging for any organization to thrive in the absence of robust technological infrastructure. In this era of rapid technological progress, the World Wide Web assumes a pivotal role in fostering a continually expanding global information repository. Its utility extends beyond individual use, serving as an invaluable platform for the seamless exchange of information within enterprises. As we navigate through this digital age, the significance of technological integration becomes increasingly evident, shaping the operational framework of diverse entities.

For students embarking on their final or third year of engineering studies, the impending placement season introduces a palpable sense of urgency. The multitude of placement events unfolding around them amplifies the need for a comprehensive understanding of their standing in the job market. Seeking insights into potential job prospects becomes paramount, prompting individuals to explore avenues for enhancing their

employability. During this pivotal juncture, the role of a placement officer becomes instrumental. Acting as a guiding force, the placement officer provides invaluable assistance by offering insights into market trends, industry expectations, and strategies for optimizing one's candidacy. Their expertise serves as a catalyst for students keen on fortifying their positions in a competitive job market.

1.LITERATURE SURVEY

In the context of modern education and employment dynamics, there is a pressing need for an efficient and user-friendly online platform that facilitates seamless communication for students to enhance the process of placements and job recruitment. The below figure shows some of the online platforms which provide job openings.



Figure 2.1 Different job opening platforms

when a company approaches a college for placements. Then the college will send the information regarding the placements through WhatsApp but many of the students are unnoticed by this information. Because along with the important information, some information which is not necessary is also present. This paper will deliver the combined information from many websites that list job vacancies and different companies.

Swapnil Kamble.et al., 2016 as presented that job portal exhibits a significant limitation as it lacks access to job opportunities that are not made available through on-campus recruitment drives.[1]

Suraj Trimukhe. et al., 2017 as presented that in their placement system, the administrative team may lack visibility into the number of students who have applied for specific job placements.[2]

S. R. Bharamagoudar. et al., 2013 discussed that this is web-based student information management system that just maintains the details regarding the students.[3]

Anjali. et al., 2016 presented that their web-based placement management system does not maintain details related to students.[4]

Cmark Zeelna Basha. et al., 2019 as presented that their enhanced technique for placement monitoring, implemented through the ServiceNow portal, primarily focuses on providing comprehensive details regarding the in-house recruitment drives while potentially lacking insight into external competitions and opportunities taking place outside the institution.[5]

3. PROPOSED SYSTEM:

The primary objective of this paper is to provide a web-based platform where comprehensive information on placements and the hiring information can be found, improving efficiency and effectiveness for students. This project will offer comprehensive details on the most recent job vacancies as well as the many competitions, events, and hackathons held by companies and organizations.

3.1 Objectives

- Centralized Information Hub

A centralized information hub in a placement portal refers to a consolidated and organized repository of information related to job placements. This hub serves as a one-stop destination for students, providing essential information for streamlining the placement process.

- Job Vacancies

A comprehensive list of job opportunities from various companies or organizations. Each job listing should include details such as job title, company information, job description, required qualifications, and application deadlines.

- Competition and Events

Specific information regarding the different competitions or events conducted externally will be provided, and information about hackathons will be displayed.

- Aggregation of Data

The aggregation of data feature in a placement portal refers to the capability of collecting, consolidating, and presenting data related to job placements from various sources.

- User Experience & Navigation

User experience and navigation features are critical components of a placement portal that significantly impact the satisfaction and efficiency of students.

- Real-Time Updates

Implement a notification system to keep users informed about application updates, interview invitations, and other relevant activities. Real-time alerts enhance user engagement and help them stay on top of the placement process.

- Personalization and Recommendation

Personalization and recommendation features in a placement portal enhance the user experience by tailoring content and suggestions to individual preferences, skills, and needs.

3.2. Usecase Diagram

A use case diagram is a visual representation in the Unified Modelling Language that illustrates the interactions between various actors and the functionalities of a system. It provides a high-level view of how different components of a system or application collaborate to achieve specific goals. Use case diagrams are widely used in software engineering and system analysis to depict the scope, requirements, and key functionalities of a system, aiding in the communication and understanding of system behavior among stakeholders, including developers, designers, and project managers.



Figure 3.1: Usecase Diagram

3.3. Class Diagram

A class diagram for a placement portal represents the static structure of the system by modelling the classes, their attributes, and the relationships between them. In the context of a placement portal, key classes would include entities such as Jobseeker, Employer, Job Listing, and Administrator. Each class encapsulates relevant attributes and methods, providing a blueprint for the objects instantiated during system operation.

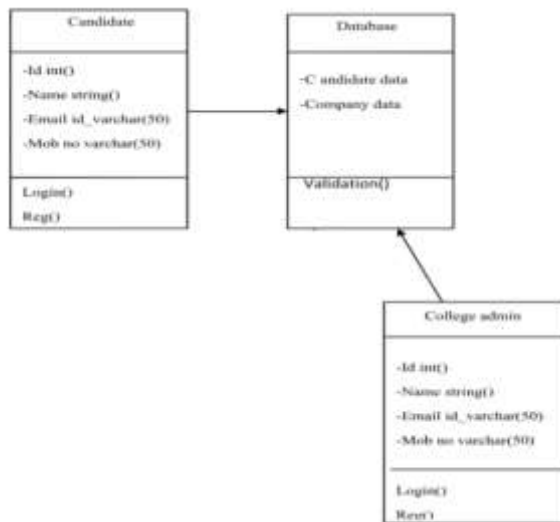


Figure 3.2: Class Diagram

3.4 . Architecture

The architecture diagram for a placement portal outlines the structural organization and key components of the system to ensure its scalability, maintainability, and efficiency. The architecture typically follows a multi-tiered approach to manage various aspects of the portal's functionality.

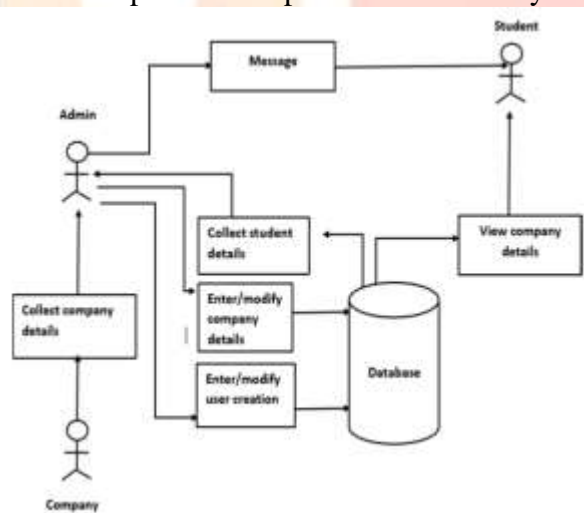


Figure 3.3: Architecture

3.5. Working Flowchart of the portal

The flowchart mainly focuses on the work of the placement portal and explores the navigation of the student page and admin page, as well as the different activities carried out by the pages.

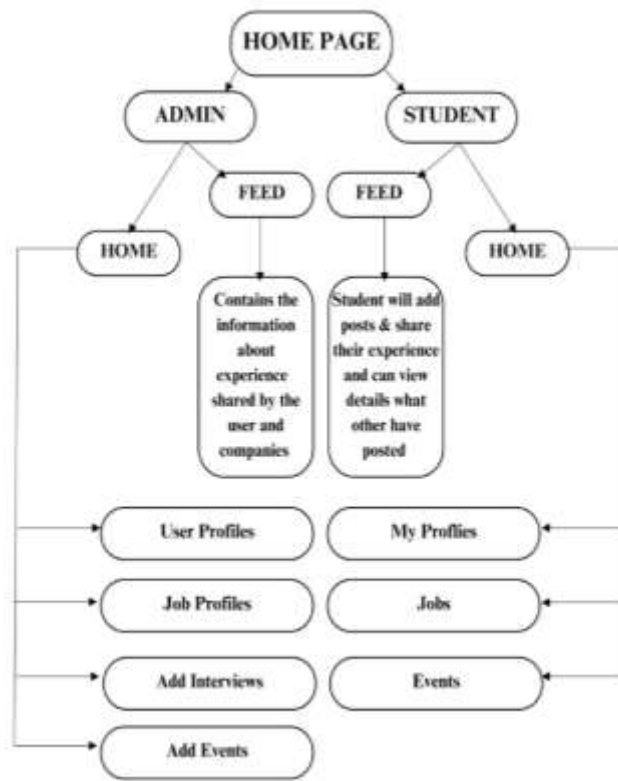


Figure 3.4: Flowchart

4. RESULTS AND DISCUSSION

Home Screen:

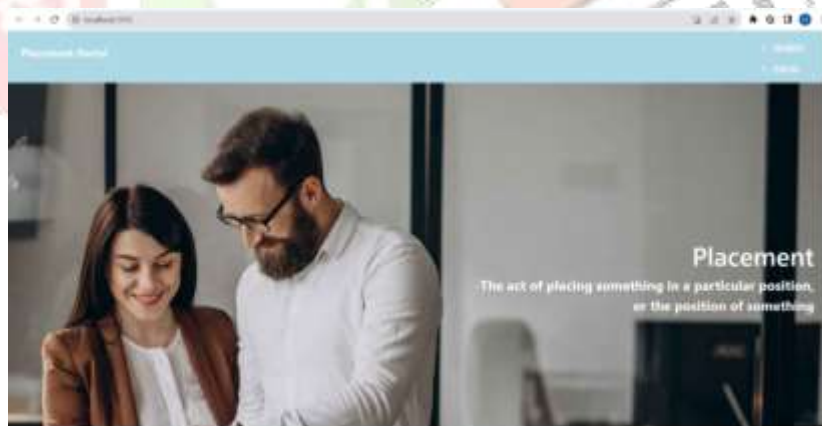


Figure 4.1 : Home page

Student Page :



Figure 4.2: Student Page

Admin Page :

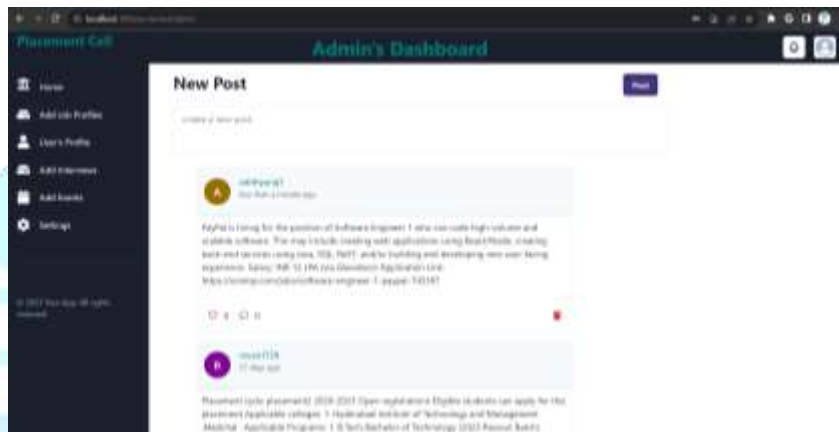


Figure 4.3 Admin Page

In the modern academic and professional landscape, the task of discovering job opportunities has become increasingly challenging for students. When educational institutions facilitate campus placements, the conventional mode of communication via platforms like WhatsApp often results in an information overload, making it difficult for students to discern crucial details amidst the deluge of data. To remedy this issue, the proposed solution involves the creation of a user-friendly, web-based placement portal, thoughtfully managed by educational institutions and seamlessly accessible to students.

This portal, meticulously developed with cutting-edge web technologies, prioritizes scalability and security, ensuring its capacity to accommodate a growing user base while safeguarding sensitive information. The overarching objective of this project is to establish a centralized platform where comprehensive insights into job placements and the recruitment process are readily accessible. By doing so, it empowers students with a more efficient and effective means to navigate and pursue their desired career opportunities, bridging the gap between academia and professional success in our dynamic and technology-driven world. The system provides more accurate input.

There is accurate data accessible. It increases system and software resilience by assuring security. Admin can see which firms' students have applied to and been accepted into, and we believe that this initiative will assist a large number of students in the future. As a consequence, we conclude that the proposed strategy will address the deficiencies in the present system.

REFERENCES

- [1] Prof. Rupali Komatwar 1, Swapnil Kamble 2, Mihir Khedekar 3, Kishor Walzade, "Placement Support System", International Journal of Advanced Research in Computer and Communication Engineering Vol. 5, Issue 1, January 2016.
- [2]. Suraj Trimukhe, Anil Todmal, Kanchan Pote, Monali Gite, Asst. Prof. S.S. Pophale, "Online Training and Placement System", International Journal of Advanced Research in Computer Science and Software Engineering. Volume 7, Issue 4, April 2017.
- [3] S. R. Bharamagoudar, R. B. Geeta, and S. G. Totad, "Web based student information management system," International Journal of Advanced Research in Computer and Communication Engineering, vol. 2, issue 6, pp. 2342-2348, 2013.
- [4] Anjali, Jeyalakshmi.PR, Anubala.R, Sri Mathura devi. G, Ranjini.V, "Web Based Placement Management System", International Journal of Computer Science and he Information Technologies, Vol. 7 (2), 760-763, 2016.
- [5] Cmak Zeelan Basha, Sofia Tasneem, Preethi Miriyala "Enhanced Technique for Placement Monitoring using ServiceNow Portal" International Journal of Innovative Technology and Exploring Engineering (IJITEE) ISSN: 2278-3075, Volume-9 Issue-1, November 2019.
- [6] K.Anand , Rethesh D, J. Hemalatha, S. Karishma, R. Logeswari "Application for Training and Placement Cell" International Journal of Pure and Applied Mathematics Volume 119 No. 15 2018, 2013-2020.
- [7] Prof. Hareesh Barapatre, Prashant Hadapi, Monish Lokhande, Pritam Tare "Online Aptitude Test" Yadavrao Tasgaonkar Institute of Engineering and Technology 1234Dept. Of Computer Engineering, International Journal for Research in Engineering Application & Management (IJREAM) Vol-01, Issue 01, APR 2015.
- [8] Dr. S.B.Vanjale, Rahul Kumar Modi, Supreet Raj, Akshit Jain "Smart Training & Placement System" Dept. of Computer Engineering, Bharati Vidyapeeth University, College of Engineering, Pune, Maharashtra, India.
- [9] A. Ramteke, M. Deogade, and P. Deogade, "Student automation system for placement cell," Iord Journal of Science & Technology, vol.2, issue 2, 2015.

