



INTERNATIONAL JOURNAL OF CREATIVE RESEARCH THOUGHTS (IJCRT)

An International Open Access, Peer-reviewed, Refereed Journal

A Study On The Properties Of Concrete By Partial Replacement Of Fine Aggregate With Crusher Sand And Cement By Marble Powder

Gaurav Rathore*1, Dr. A.K Saxena²

*1M.Tech.Scholar, 2 Professor, Department of Civil Engineering

^{1,2}Lakshmi Narain College of Technology, Bhopal, India

Abstract: Utilization of marble powder and different is Crusher sand as incomplete substitution of concrete and stable creation. Right now ruin down the excellent of cement made with utilizing these waste substances one is marble powder and different is Crusher sand. The marble powder is utilized as 16% supplant by means of weight of concrete and Crusher sand as the incomplete substitution of Fine Aggregate from 0%, 6%, 12%, 18%, 24%, 30% and 36%. The comparison of the strong right here is M-30 evaluation. It has been utilized as a substitution of nice totals in severa writing works but this paper famous the practicality of the substitution of marble powder for concrete to accomplish financial system and circumstance sparing. Droop Test was once performed for the crisp cement whilst Compressive Strength, Flexure Strength and Split Tensile Tests have been conveyed for the Hardened cement. All exams are carried out at 7-day, 14 - day, and 28 days with zero to 36% substitution of sand at an meantime of 6%. Investigation, for example, express gravity trial of Crusher sand and sand by means of pycnometer strategy, dampness substance of sand and Crusher sand with the aid of range drying technique, normal consistency of concrete, and beginning placing time of concrete, have been carried out to determine the bodily property of cement. On new strong slump check was once carried out to test performance of concrete and after then compressive satisfactory used to be checked. Consequently stone residue is appropriate replacement of fantastic totals in strong mixture for development. This is magnificent sparing in exorbitant material.

Keywords— Compressive Strength, marble powder, Crusher sand, Mix Design, Test, Flexure Test, Split Tensile Test

1. INTRODUCTION

The development business isn't just utilized in building development yet in addition in different territories like extensions, streets, harbors, dam, Railways and some more. It is relatively prudent, simple to make offers congruity robustness and surely it lays the job of creating and improving or present day life. It is a composite material which is comprised of sand, concrete, total and water. The new concrete can be form into any craving shape. The life of the solid is high so it tends to be utilized as adaptable material. In the solid the concrete is utilized as the folio material which has the coupling inclination. Because of increment in exercises for various locales and utilities terrifying of the normally accessible assets is being constrained because of it's over abuse. This is the risk to the earth. Additionally the utilization of regular material turns out to be expensive step by step. Subsequently protection of the normally accessible material is incredible test for the structural specialists. By utilizing the elective materials which diminished halfway, there is best way to look through materials which can completely or incompletely supplanted normally accessible material in the development field. The different elective materials are utilized as fractional for completely substitution of ordinary material for example Rice husk debris, fly-debris, sugarcane bagasse's debris, coconut shell, squashed sand, reused total and so on. Here we utilize the two waste materials which is effectively accessible. The Crusher sand delivered from stone pounding zones appers as an issue for compelling removal. Which is utilized here as partly substitution as fine total. Additionally the glass powder created from enterprises is likewise a waste material which can be utilized as fractional substitution as concrete. Sand is a material utilized in concrete as fine total.

2. OBJECTIVE

1. The objective of this study is to search alternatives material which can fully or partially replaced naturally available material in construction
2. The main purpose of this study is to reduce the use of conventional material for making the concrete.
3. Substitution of normal sand by crusher sand will serve both solid waste minimization and waste recovery.
4. To check the workability of the concrete by adding marble Powder and crusher sand
5. To find out the compressive strength of concrete by adding marble Powder and crusher sand.
6. To determine the optimum percentage of Marble Powder is 16% and crusher sand in concrete by replacing 0%, 6%, 12%, 18%, 24%, 30% and 36% of fine aggregate for M-30, Grade of concrete.

3. LITERATURE REVIEW

Numerous works have been done to investigate the advantages of utilizing different waste materials, for example, rock dust, marble dust, Crusher sand and glass powder in making and improving the properties of cement. The accompanying works have done by the creators as portrayed beneath

Utilization of Crusher sand as a fine total in solid draws genuine consideration of analysts and specialists. The most extreme compressive and flexural qualities were watched for examples containing a 6% squander muck when contrasted and control and it was likewise discovered that waste slop up to 9% could successfully be utilized as an added substance material in concrete could adequately be utilized as an added substance material in concrete. With the consideration of Marble powder the quality of cement progressively increments up to a specific cutoff yet the bit by bit diminishes. With the incorporation of Marble powder upto 10% the underlying quality increase in concrete is high. At 10% there is 27.4% expansion in starting Split Tensile quality for 7 days. At 10% there is 11.5% expansion in introductory Split Tensile quality for 28 days. The underlying quality slowly diminishes from 15%. It was discovered that the ideal rate for supplanting of marble powder with concrete and it is practically 10% concrete for the two 3D shapes and chambers,

P. Aggarwal et al [5] completed the trial examinations on the impact of utilization of that material of debris as a substitution of fine totals. The quality advancement for an assortment of rates (0-half) supplanting of fine totals with base debris can without much of a stretch be likened the quality improvement of ostensible cement at various ages. Dr. Lalit Kumar, Er. Arvinder Singh. Have research the

plausibility of utilizing squashed stone residue as fine total incompletely or completely with various evaluations of solid composites. The appropriateness of squashed stone residue squander as a fine total for concrete has been evaluated by contrasting its essential properties and that of traditional cement. Two fundamental blends were picked for common sand to accomplish M25 and M30 grade concrete. The equal blends were gotten by supplanting common sand by stone residue halfway and completely. The test outcomes shows the squashed stone residue can be utilized successfully to supplant regular sand in concrete. In the exploratory investigation of solidarity qualities of solid utilizing squashed stone residue as fine total it is discovered that there is increment in compressive quality, flexure quality and rigidity.

III. Materials Uses

1. Cement

In the present work locally available Portland Pozzolana Cement (fly ash based) brand name Birla Gold confirming to IS: 1489 (Part 1) -1991 was used. Having specific gravity 3.12 and normal consistency 33%

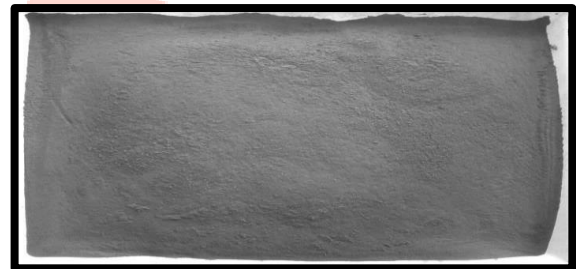


Fig 1: Portland Pozzolana Cement Sample

2. Fine Aggregate

The fine aggregate in this research work are used from locally available and confirms to zone II of IS 383:1970. Having specific gravity 2.67 and fineness modulus 2.87



Fig.2: Sand Sample

Table 1. Sieve Analysis of Fine aggregate

Sieve Size	Weight retained (gm)	Cumulative weight retained (gm)	Cumulative Percentage weight retained	% Passing
4.75 mm	-	-	-	100
2.36 mm	55	55	5.5	94.5
1.18 mm	228	283	28.3	71.7
600 μ	348	631	63.1	36.9
300 μ	285	916	91.6	8.4
150 μ	75	991	99.1	0.9
Pan	5	996	100	0
Total 1 Kg	Fineness Modulus = $287.6/100 = 2.87$			

Total = 5 Kg	Fineness modulus = $602.66/100 = 6.026$
--------------	---

Table 3. Sieve analysis for coarse aggregate of 10 mm size.

Sieve size	Weight retained (gm)	Cumulative weight retained (gm)	Cumulative % weight retained	% passing
20 mm	-	-	-	100
10 mm	2856	2856	57.12	42.88
4.75 mm	1394	4250	85	15
2.36 mm	744	4992	100	-
1.18 mm	0	4992	100	-
600 μ	0	4992	100	-
300 μ	0	4992	100	-
150 μ	0	4992	100	-
Total = 5 Kg	Fineness modulus = $642.12/100 = 6.42$			

3. Coarse Aggregate

Two aggregate of sizes 20 mm and 10 mm were used from local available in this work. The specific gravity of coarse aggregate was 2.72 for both the fractions. The sieve analysis of 10 mm and 20 mm coarse aggregate is given in table below. The 20 mm and 10 mm aggregate were mixed in the ratio of 60:40. The coarse aggregates are confirmed to IS 383:1970 and having specific gravity 2.84 and fineness modulus 6.026

Table 2. Sieve analysis for coarse aggregate of 20 mm size

Sieve size	Weight retained (gm)	Cumulative weight retained (gm)	Cumulative Percentage weight retained	% passing
40 mm	-	-	-	100
20 mm	484	484	9.68	90.32
10 mm	4165	4649	92.98	7.02
4.75 mm	345	4994	100	-
1.18 mm	0	4994	100	-
600 μ	0	4994	100	-
300 μ	0	4994	100	-
150 μ	0	4994	100	-

4. Crusher sand

Crusher sand produced from stone crushing zones appears as a problem for effective disposal. Hence in this work stone dust is used in the concrete as partial replacement of the sand. The main purpose of this work is to waste minimization. The study focuses to determine the relative performance of concrete by using stone dust. Stone dust was collected from local stone crushing units.

Table 4. Sieve analysis for Crusher sand

Sieve size	Weight retained (gm)	Cumulative weight retained (gm)	Cumulative percentage weight retained	% passing
4.75 mm	-	-	-	100
2.36 mm	24	24	2.4	97.6
1.18 mm	158	182	18.2	81.8
600 μ	185	367	36.7	63.3
300 μ	385	752	75.2	24.8
150 μ	197	949	94.9	5.1
Pan	46	995	100	0
Total = 1 kg	Fineness modulus = $227.40/100 = 2.27$			

5. Marble Powder

Waste Marble Powder in this study was used from locally available market. Marble Powder waste is very hard material. The Marble Powder if ball pulverized and particles size are less than 150 μm and sieved through 75

Designation	Compressive Strength in N/mm^2		
	7 Days	14 Days	28 Days
MP1-30-00	22.43	25.58	32.80
MP1-30-06	22.75	26.10	33.50
MP1-30-12	22.98	26.78	35.40
MP1-30-18	23.43	27.40	36.10
MP1-30-24	23.89	27.93	38.40
MP1-30-30	23.44	27.22	37.56
MP1-30-36	23.05	26.68	36.60

μm .

6. Water

The clean portable water is used in this experimental work without any visible impurities.

IV Experimental Details

1. Mix design

In this experiment we select the two grades of concrete M-30. The mix design was carried out as per IS: 10262-2009. The trials have been prepared and. M-30 grade was design for this experiment having the mix proportion 1:1.32:2.85 and the water cement ratio are 0.43. All locally available materials are used during the preparation of the mix proportion.

2. Mixing and casting of samples

The mixing and casting were done with proper care and all materials were weighted properly and mixed in laboratory concrete mixer. The water is added after all materials are feed into in mixer in proper order. The cubes were filled and compacted by using table vibrating machine and the cylinder and beams were compacted using the tamping rod for around 25 times. The moulds were leveled properly. The specimens were kept for 24 hours and then it is removed from mould and kept in curing tank till the testing days. All specimens are tested at 7, 14, and 28 days.



Fig. 3 casting of samples

V. Results

1. Compressive Strength Tests

The compressive strength tests were done by using the cubic specimen of sizes 150x150x150 mm. The moulds are conforming to the IS specification. For each test three specimens were taken and their average value is considered. The load should be applied gradually at the rate of 140 kg/cm^2 per minute till the specimens fails. The load at the failure divided by area of specimen gives the compressive strength of concrete. The cubes were tested at 7, 14 and 28 days of curing



Fig.4 Compressive Strength Tests

Table 5. Compressive Strength of Different Mix of M-30 concrete

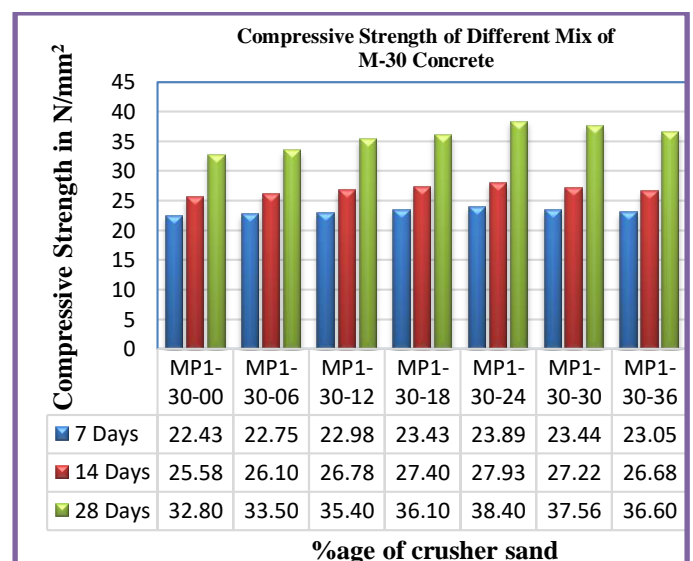


Figure 5 Compressive Strength of Different Mix of M-30 Concrete

4. Flexure Strength Tests

The flexure strength also known as modulus of rupture, bends strength, or fracture strength. The value of modulus of rupture depends on the dimensions of the beam and manner of loading. The value of the flexural strength is about 10 to 20 percent of compressive strength depending on the type, size and volume of coarse aggregate used. In these tests the beams were casted having the size 150x150x700 mm. For this the moulds of the same sizes are taken which are confirming to the IS specification. During the casting it is compacted by using the tamping rod of around 25 times the diameter of the tamping rod is 16 mm. The flexure strength was tested at the age of 7, 14 and 28 days curing.



Fig. 6 Flexure Strength Tests

Table 6 Flexural strength of Different Mix of M-30 Concrete

Designation	Flexure Strength in N/mm ² M30		
	7 Days	14 Days	28 Days
MP1-30-00	2.12	3.41	4.48
MP1-30-06	2.65	3.37	4.75
MP1-30-12	3.30	4.28	5.36
MP1-30-18	3.97	4.96	5.92
MP1-30-24	4.24	5.12	6.18
MP1-30-30	3.58	4.84	5.66
MP1-30-36	3.18	4.46	5.14

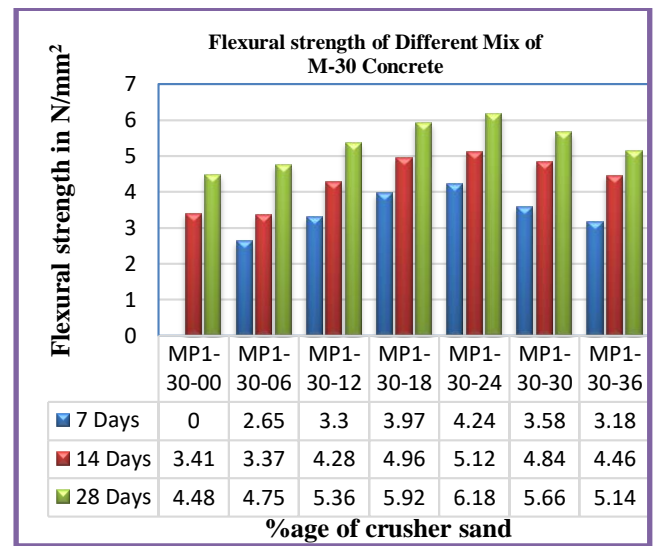


Figure 7. Flexural strength of Different Mix of M-30 Concrete

5. Split Tensile Tests

We know that the concrete is weak in tension. The tensile strength is one of the important properties of the concrete. The tensile strength tests the cylinders were casted having the size 150 mm diameter and 300 mm lengths. This is the indirect method of the testing the tensile strength of the concrete. For this the moulds of the same sizes are taken which are confirming to the IS specification. It is also casted by using the 16 mm tamping rod of around 25 times. The split tensile tests were carried out at 7, 14 and 28 days curing.

Table 7. Split Tensile Strength of Different Mix of M-30 Concrete

Designation	Split Tensile Strength in M30 N/mm ²		
	7 Days	14 Days	28 Days
MP1-30-00	2.62	3.66	4.72
MP1-30-06	2.88	3.82	4.96
MP1-30-12	3.36	3.98	5.22
MP1-30-18	3.58	4.13	5.46
MP1-30-24	3.74	4.38	5.63
MP1-30-30	3.92	4.73	5.85
MP1-30-36	3.49	4.18	5.38

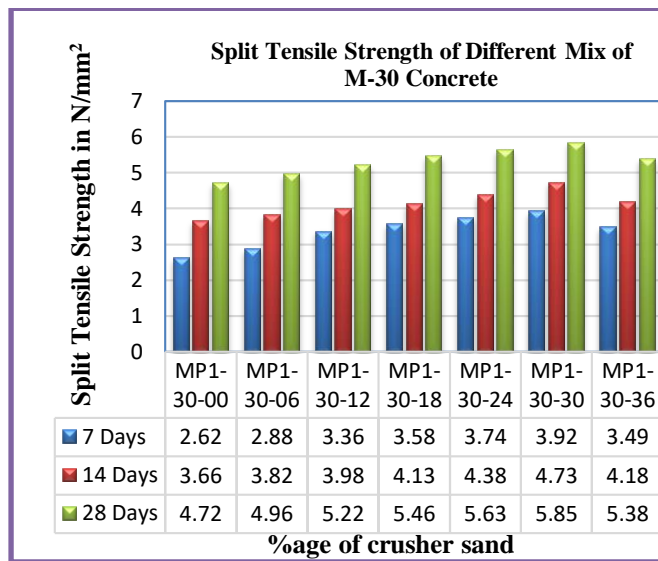


Figure 8. Split Tensile Strength of Different Mix of M-30 Concrete

V. Conclusion

1. Compressive Strength: Discussion: From the above table is seen that the compressive strength with 16% Glass powder and 84% cement in M-30 grade of concrete at 7, 14 and 28 days gradually increases from 22.43N/mm² to 23.89 N/mm², from 25.58N/mm² to 27.93 N/mm² and from 32.80N/mm² to 38.40 N/mm² respectively when the percentage of the crusher sand increase from 0% to 24% and decreases for from 23.89N/mm² to 23.05 N/mm², from 27.93N/mm² to 26.68 N/mm² and from 38.40 N/mm² to 36.60 N/mm² respectively for M-30 grade of concrete when the percentage of the crusher sand increase from 24% to 36%

2. Flexure Strength: Discussion: From the above table is seen that the Flexural strength with 16% Marble powder and 84% cement in M-30 grade of concrete at 7, 14 and 28 days gradually increases from 2.12N/mm² to 4.24 N/mm², from 3.41N/mm² to 5.12 N/mm² and from 4.48 N/mm² to 6.18 N/mm² respectively when the percentage of the crusher sand increase from 0% to 24% and decreases for from 4.24 N/mm² to 3.18 N/mm², from 5.12 N/mm² to 4.46 N/mm² and from 6.18 N/mm² to 5.14 N/mm² respectively for M-30 grade of concrete when the percentage of the crusher sand increase from 24% to 36%

3. Split Tensile Strength:

From the above table is seen that the Split Tensile Strength with 16% Marble powder and 84% cement in M-30 grade of concrete at 7, 14 and 28 days gradually increases from 2.62 /mm² to 3.92 N/mm², from 3.66 N/mm² to 4.73 N/mm² and from 4.72 N/mm² to 5.85 N/mm² respectively when the percentage of the crusher sand increase from 0% to 24% and decreases for from 3.92 N/mm² to 3.49

N/mm², from 4.73 N/mm² to 4.18 N/mm² and from 5.85 N/mm² to 5.38 N/mm² respectively for M-30 grade of concrete when the percentage of the crusher sand increase from 30% to 36%

VIII REFERENCES

- [1] Dr. G. Vijayakumar, Ms H. Vishliny, Dr. D. Govindarajulu studies on glass powder as partial replacement of cement in concrete production. IJETAE: International journal of emerging technology and advanced engineering. Volume 3, Issue 2, Feb 2013.
- [2] J.D. Chaitanya kumar, G.V.S. Abhilash, P.Khasim Khan, G.Mnikanta sai, V. Tarakh ram experimental studies on glass fiber concrete. AJER: American Journal of Engineering Research e-ISSN: 2320-0847 : p-2320-0936 volume-5, Issue-5, pp-100-104.
- [3] Brajesh kumar Suman, Vikas Srivastava JMEST: Journal of Multidisciplinary Engineering Science and Technology ISSN: 3159-0040, vol. 2 Issue 4, April – 2015
- [4] Er. Lalit Kumar , Er. Arvinder Singh A study on the strength of concrete using crushed stone dust as fine aggregate. IJRASET: International Journal for Research in Applied Sciencde & Engineering Technology. ISSN: 2321-9653 vol. 3 Issue I, Jnauary 2015.
- [5] A.K. Shau, Sunil Kumar and A.K. Sachan (2003) “crushed stone waste as fine aggregate for concrete” the Indian concrete Journal, pp 885848.
- [6] Prakash Rao, D.s. & Giridhar Kumar, V.(2004) “Investigations on concrete with stone crusher dust as fine aggregate”. The Indian Concrete Journal, M.E. Thesis submitted to Osmania University, Hyderabad, India.
- [7] IS: 383-1970. Specification for coarse and Fine Aggregates from natural sources for concrete.
- [8] IS: 10262-2009: Guidelines for concrete mix design proportioning.
- [9] IS: 456-2000. Specification for plain and reinforced concrete.
- [10] J. D .Chaitanya Kumar, G. V. S. Abhilash, P. Khasim Khan, G. Manikantasai, V.Tarakaram, Experimental Studies on Glass Fiber Concrete, American Journal of Engineering Research, Vol 5, Issue 5, PP 100-