

# A COMPARATIVE STUDY ON EFFECTIVENESS OF NEUROMUSCULAR TRAINING AND KINESTHESIA BALANCE AGILITY TRAINING ON PAIN, STRENGTH AND FUNCTION IN KNEE OSTEOARTHRITIS

<sup>1</sup>Dr.Kommunuri Syamala Slessy <sup>2</sup>Dr.Patchava Apparao

<sup>1</sup>MPT(Orthopedics)<sup>2</sup>nd year, <sup>2</sup>Principal,

Department of Orthopedics Physiotherapy

Swatantra Institute of Physiotherapy and Rehabilitation, Rajahmundry, Andhra Pradesh, India.

**ABSTRACT:** Knee osteoarthritis is a degenerative joint disease, which alters the structure of the cartilage. The cartilage degenerated along with the surrounding tissues which are synovial membrane, menisci and underlying bone. Over time, knee OA will cause both pain and loss of physical function, resulting in reduced quality of life. **PURPOSE:** - The purpose of this study is to find the effect between Neuromuscular training and Kinesthesia Balance Agility training on improving pain, strength and functional ability in subjects with knee osteoarthritis. **METHODS:** - 600 subjects who were clinically diagnosed of osteoarthritis of knee were assessed and only 120 were recruited who are willing to be in the study and they were randomly allocated into two groups. In Group A (n=60) subjects were treated with neuromuscular training whereas thrice a week for 8 weeks, where in Group B (n=60) subjects were treated with kinesthesia balance agility training with conventional exercises. The outcome of this intervention was knee pain, and disability index (KOOS) and lower limb strength (knee flexion and extension) these were recorded before and after the session of 8 weeks intervention. **CONCLUSION:** - It was concluded that neuromuscular training and KBA training are equally effective in reducing pain but neuromuscular training is more effective in improving strength (Dynamometer) and function(KOOS) when compared with KBA training.

**Key words:** Knee Osteoarthritis; strength; KOOS;ADL;QOL Neuromuscular training; KBA.

## I. INTRODUCTION

Knee osteoarthritis (OA) is a degenerative joint disease, that changes the structure of the cartilage<sup>1,3</sup>. The cartilage degenerates with the surrounding tissues, i.e the synovial membrane, the menisci and the underlying bone. Over time, knee osteoarthritis will result in both pain and loss of physical function, resulting in reduced quality of life<sup>2</sup> According to W.H.O definition of osteoarthritis is a disease of the entire joint involving the cartilage, joint lining, ligaments, and underlying bone the breakdown of these tissues eventually leads to pain and stiffness<sup>4</sup> Globally, there were an estimated 241 million cases of osteoarthritis in 2013, an increase of 71.9% from 1990.<sup>5</sup> The global prevalence of age-standardized knee osteoarthritis was 3.8 % in 2010 . Hypertension of the hip and knee was ranked 11th among the 291 persons with a global disability<sup>6</sup>. About one-third of people with knee osteoarthritis will progress to more advanced disease<sup>7,8</sup>, which is the primary indication for knee replacement surgery. In India, according to the adult rural population, it was estimated at 5.8% among the elderly and 16.4% was estimated. The

annual consultation rate for osteoarthritis has increased by 15 million in India<sup>10</sup>: by 2020, the number of people aged 65 and over in India is expected to reach 77 million, while India has 100 million in 2010.<sup>9</sup>

The onset and progression of knee osteoarthritis depend to a large extent on mechanical factors, such as excessive joint load, abnormal knee joint load, or a combination of both. Overload of the knee joint may be caused by acute overload trauma (for example, LCA<sup>13</sup> rupture, chronic with obesity<sup>14,15</sup> or structural degeneration related to osteoarthritis of the knee causing meniscal tears and misalignment)<sup>11</sup> Abnormal knee joint loads caused by abnormal anatomy of congenital or acquired origin (eg, partial meniscectomy)<sup>16</sup> may result in increased focal stress on a certain part of the joint.

Primary osteoarthritis is idiopathic and secondary osteoarthritis is caused by endocrine, inflammatory, metabolic and genetic diseases, etc. It occurs mainly in the elderly characterized by erosion of articular cartilaginous hypertrophy in the margins of the disease. alteration of the synovial membrane and joint capsule. Clinical features include pain, swelling, gait, stiffness, decreased range of motion. According to Yolanda Smith. Osteoarthritis is a generative joint disease that involves the breakdown of joints, articular cartilage and subchondral bone following mechanical stress in the area. The diagnosis is made with certainty based on history and clinical examination<sup>17,18</sup>. X-rays can confirm the diagnosis. Typical radiographic changes include narrowing of the joint space, subchondral sclerosis (increased bone formation around the joint), formation of subchondral cysts, and osteophytes<sup>19</sup>. and arthroscopy<sup>20</sup>.

Historically, the diagnosis and severity of knee osteoarthritis is based on structural changes observed on standard radiographs of the tibiofemoral joint. Knee x-rays are commonly classified by the Kellgren and Lawrence classification system<sup>21,22</sup>. However, X-rays have been shown to be an imprecise guide for the diagnosis of knee osteoarthritis, due to the poor correlation between pain and structural changes<sup>23,24</sup>. conservative by drugs and physiotherapy. Analgesics and anti-inflammatories are widely used in treatment<sup>25</sup>. Current evidence suggests that NSAIDs may be beneficial in reducing pain in the short term, but there is no support for long-term use<sup>26</sup>

In patients with severe osteoarthritis of the knee, they are eligible for unilateral total knee arthroplasty to allow for increased flexion by incorporating posterior femoral condyle extension, with modification of the tibial spine, prolonging the posterior femoral condyles ; , allowing posterior translation of the femur and flexion beyond 120 ° without tibio-femoral conflict. An increased bending offset is achieved by removing an additional 2 mm of bone from the posterior femoral condyles to accommodate the thicker condyles of the femoral component<sup>27,28</sup>.

A neuromuscular exercise program that focuses on optimal alignment of the trunk and lower limb joints, as well as the quality of performance movement while dynamically and functionally strengthening the lower limb muscles, can reduce knee load. based on biomechanical and neuromuscular principles and aims to improve sensorimotor control and achieve compensatory functional stability. Sensorimotor control is the ability to produce controlled movement through coordinated muscle activity, and functional stability (also known as dynamic stability) is the ability of the joint to remain stable during physical activity.

Kinesthetic Balance Agility (KBA) exercise programs are designed to decrease proprioceptive impairment by using agility and balance movements to activate, challenge and adapt the proprioceptors of the nervous system. Decreasing the proprioceptive deficit would thus increase the dynamic stability of the knee and improve activities of daily living. In addition, joint instability and joint laxity of the frontal plane were cited as a likely causal factor in the development of knee osteoarthritis and more. Proprioceptive acuity, ie, awareness of joint position, joint movement (kinesthesia), and the sense of resistance, have been established<sup>31</sup>.

## II.METHODOLOGY

It is a Prospective cohort study with Systemic random sampling. The study was conducted at Out Patient Department of Physiotherapy, GSL Medical College and General Hospital, Rajamahendravaram, Andhra Pradesh, India. The study was conducted during the period between April 2017 and April 2018. 8 weeks of training programme which includes KBA training in control group and Neuromuscular training in Experimental group. A total number of 600 knee osteoarthritis subjects were screened of in that 120 subjects were recruited who are willing to participate in the study, obtaining the consent form from the patients who met the inclusion criteria. These 120 subjects were randomized into two groups 60 subjects in each group.

**2.1 INCLUSION CRITERIA** (i)Participants with diagnosis of primary knee Osteoarthritis having a symptom of pain and at least three features of the following six items can be classified as OA knee according to the American College of Rheumatology Criteria (ii) Stiffness followed by rest and early morning joint stiffness. (iii) Early Morning stiffness for about 30 minutes. (iv)Tenderness and enlargement of bone with crepitus. (v)No warmth on palpation. (vi) Symptoms more than 3 months. (vii) Subjects who are able to walk on heels and toes .(viii) Age between 45 to 65 yrs both genders. (ix) Grade 2 and 3 Primary Osteoarthritis diagnosed by an Orthopaedician.

**2.2 EXCLUSION CRITERIA** (i) Any history of knee, hip and ankle surgery prior to the study. (ii) Any local or systematic infection. (iii) Mentally deficits patients. (iv) Any deformities in the lower limbs. (v) Limb length discrepancy. (vi) Any intra articular injection to the knee.

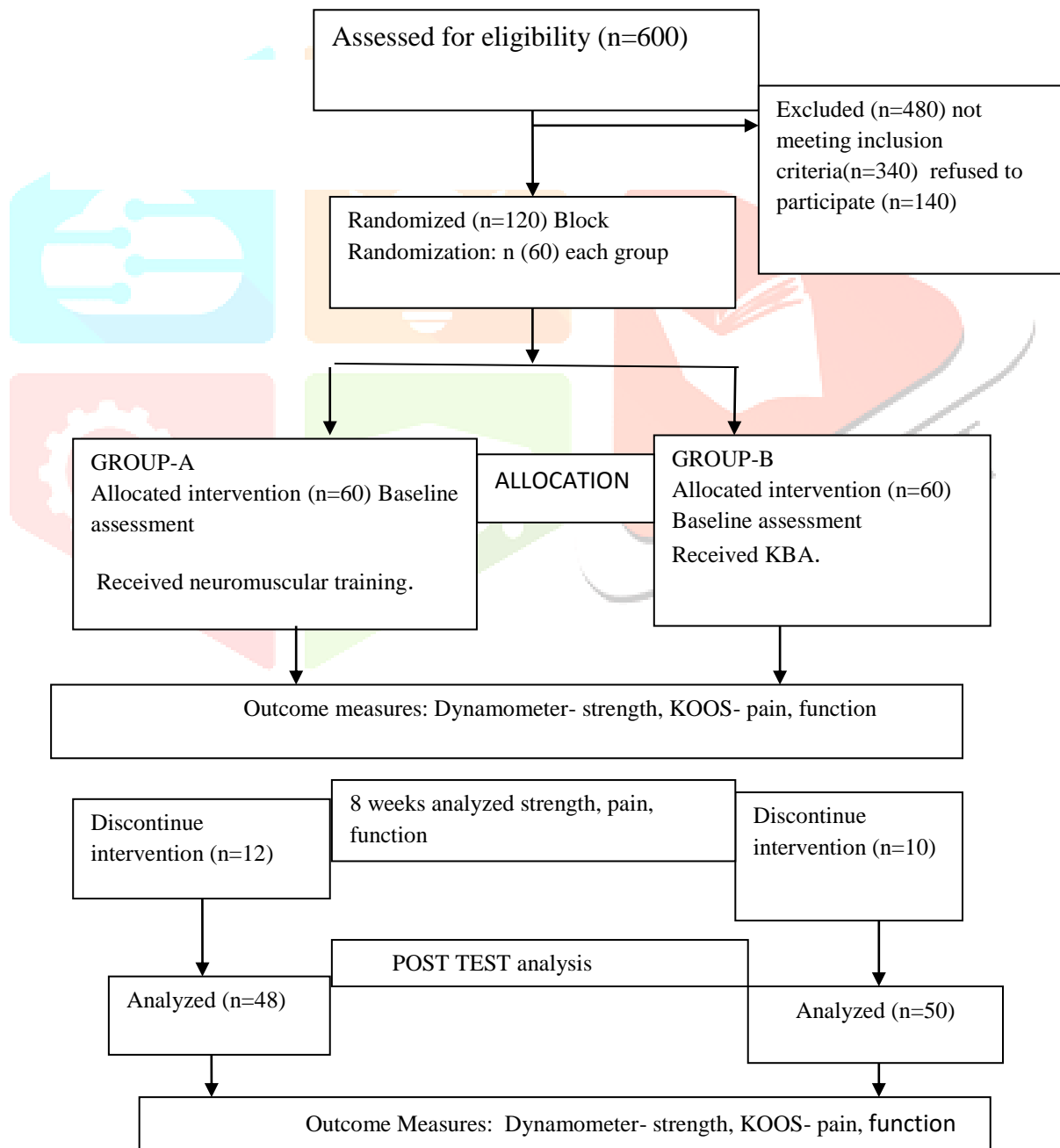
#### 2.4 TREATMENT PROTOCOL

**2.4.1 GROUP A:** Received neuromuscular training along with warm-up for 60min, 3days per week for 8weeks

**2.4.2 GROUP B:** received Kinesthesia Balance and Agility training of 50min, 3days per week for 8weeks

**2.5 OUTCOME MEASURES:** Strength- Measured by Hand Held Dynamometer, Function- Measured by KOOS Score

FLOW CHART OF RANDOMIZATION AND INTERVENTION



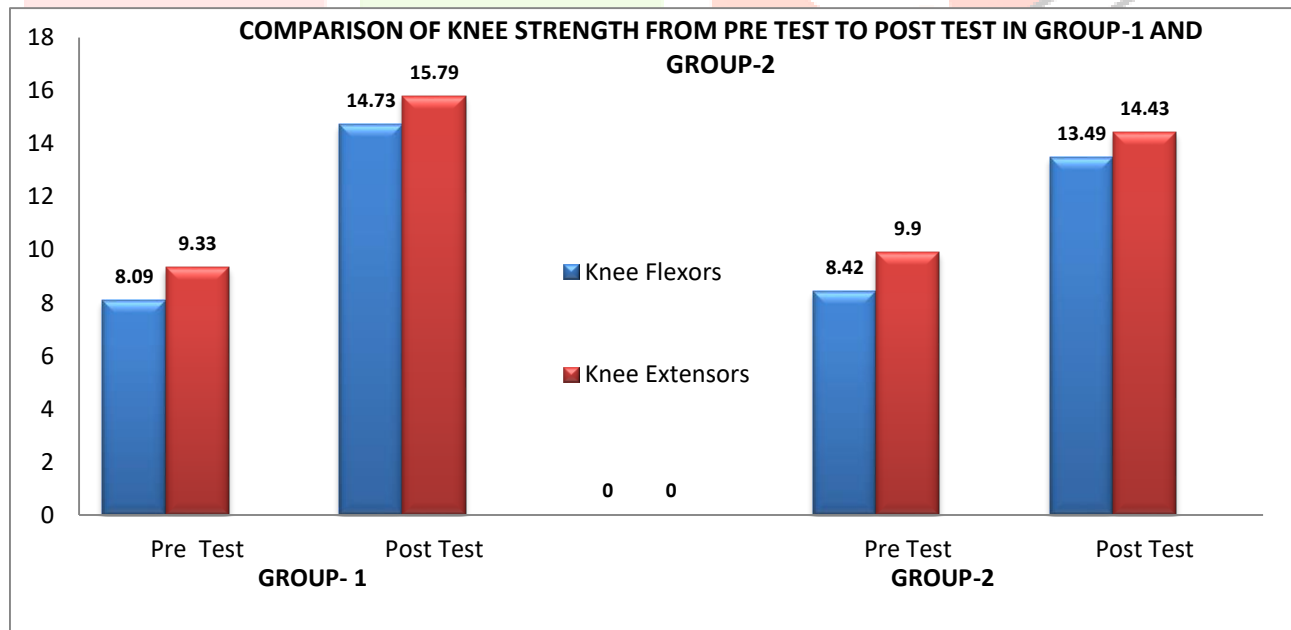
**IV. STATISTICAL ANALYSIS:** Statistical analysis was performed using MS Excel 2007 and SPSS software version 20.0. Descriptive statistical data has presented in the form of mean  $\pm$  Standard deviation and mean difference percentage were calculated and presented. The statistical significance was set at  $p < 0.05$  with 95% confidence intervals.

**V. RESULTS:**

**Table:1 Analysis of mean scores of Knee Strength within the Groups**

Parameters		Measurement	Group-1		Group-2		p-value	Interference
Knee strength	Knee flexors		Mean	SD	Mean	SD		
		Pre test	8.09	2.31	8.42	1.803	0.000	Significant
	Post test	14.73	2.155	13.49	1.682	0.000	Significant	
	Knee extensors	9.33	2.735	9.9	1.739	0.000	Significant	
	Post test	15.79	1.996	14.43	1.607	0.000	Significant	

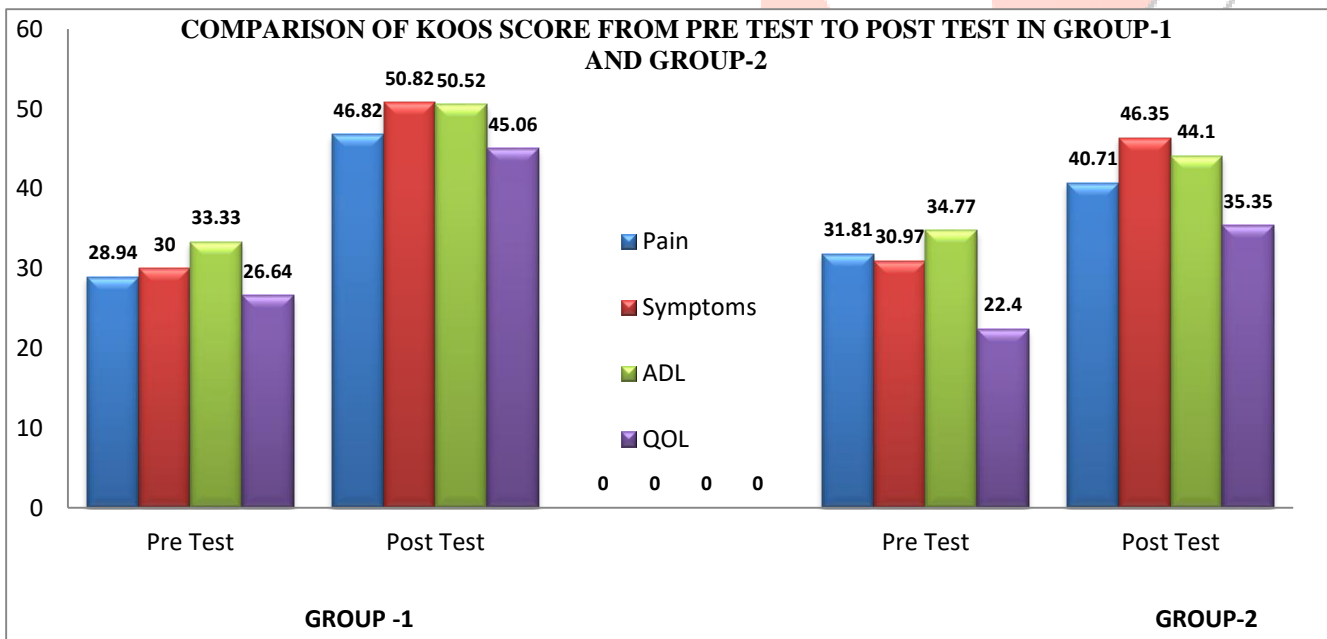
**Graph :1 Comparison of mean score of knee strength within the groups**



**Table: 2 Analysis of mean scores of KOOS components within the Groups**

Parameters		Measurement	Group-1		Group-2		p-Value	Interference
KOOS Score	Pain		Mean	SD	Mean	SD		
			Pre test	28.94	10.888	31.81	11.415	0.000
		Post test	46.82	13.46	40.71	11.495	0.000	Significant
	Symptoms	Pre test	30.00	21.535	30.97	14.345	0.000	Significant
		Post test	50.82	16.158	46.35	17.285	0.000	Significant
	ADL	Pre test	33.33	12.633	34.77	11.575	0.000	Significant
		Post test	50.52	10.323	44.10	11.247	0.000	Significant
	QOL	Pre test	26.64	10.377	22.45	7.279	0.000	Significant
Post test		45.06	12.344	35.35	9.142	0.000	Significant	

**Graph :2 Comparison of mean score of knee strength within the groups**



**VI. DISCUSSION** The present study was to evaluate the effectiveness of Neuromuscular training (Group 1) and Kinesthesia Balance Agility training (Group 2) on improving function, and strength in subjects with Osteoarthritis of Knee. In this study subjects were assessed for knee pain, strength, and function. Dynamometer and KOOS score were used to quantify the intensity of knee pain, strength, and physical function. There is significant difference in Dynamometer and KOOS score in all subjects after 8 weeks treatment with neuromuscular training and kinesthesia balance agility training. There are a total of 22 drop outs in the study, 12 in GROUP-A and 10 in GROUP-B. The result of the study in Neuromuscular group is mainly based on the sensorimotor system. Sensorimotor dysfunction may also play a role in the development and progression of degenerative knee disease. The neuromuscular training method is based on biomechanical and neuromuscular principles and aims to improve sensorimotor control and achieve compensatory functional stability. It is the ability to produce controlled movement through coordinated muscle activity, and functional stability. The result of the study shows that Neuromuscular training is more effective than KBA training to improve the pain, Strength and functional ability of OA knee patients. The improvement in Group 1 is more than Group 2 and is statistically highly significant. Loss of proprioception that can be showed from OA knee patients was reported as a cause of diseases and as a factor of progress and it will be effective to reduce pain and disability progress strength of OA knee. In conclusion, patients who have knee osteoarthritis need to improve muscle power, proprioception. We think that designing appropriate exercise programs create effective result. Between group analysis has shown that that there is no statistically significance difference between Neuromuscular and KBA group is symptoms, but there is a significant difference in improving strength and ADL, QOL and decreasing pain after 8 weeks of intervention for subjects with OA knee Both the groups has shown improvement in the symptoms and mainly Neuromuscular have shown more improvement in strength, function (ADL,QOL) and decreasing of pain when compared with KBA, because as neuromuscular have more activity and strengthening which improve sensoriomotor control and achieve compensatory stability than KBA.

**LIMITATIONS:** (i)Small sample size. (ii) Lack of control group in the present study (iii)Subjects could not be followed up for longer period

**VII. CONCLUSION** - It was concluded that neuromuscular training and KBA training are equally effective in reducing pain but neuromuscular training is more effective in improving strength (Dynamometer) and function(KOOS) when compared with KBA training.

#### VIII. REFERENCES

1. Martel-Pelletier J, Boileau C, Pelletier JP, Roughley PJ. Cartilage in normal and osteoarthritis conditions. *Best Practice & Research Clinical Rheumatology*. 2008 Apr 1;22(2):351-84
2. Bitton R. The economic burden of osteoarthritis. *The American journal of managed care*. 2009 Sep;15(8 Suppl):S230-5.
3. Andriacchi TP, Favre J. The nature of in vivo mechanical signals that influence cartilage health and progression to knee osteoarthritis. *Current rheumatology reports*. 2014 Nov 1;16(11):463.
4. World Health Organization. *The world health report 2002: reducing risks, promoting healthy life*. World Health Organization; 2002.
5. Vos T, Barber RM, Bell B, Bertozzi-Villa A, Biryukov S, Bolliger I, Charlson F, Davis A, Degenhardt L, Dicker D. Global Burden of Disease Study 2013 Collaborators. Global, regional, and national incidence, prevalence, and years lived with disability for 301 acute and chronic diseases and injuries in 188 countries, 1990–2013: A systematic analysis for the Global Burden of Disease Study 2013. *Lancet*. 2015;386(9995):743-800.
6. Cross M, Smith E, Hoy D, Nolte S, Ackerman I, Fransen M, Bridgett L, Williams S, Guillemin F, Hill CL, Laslett LL. The global burden of hip and knee osteoarthritis: estimates from the global burden of disease 2010 study. *Annals of the rheumatic diseases*. 2014 Jul 1;73(7):1323-30..
7. Lachance L, Sowers MF, Jamadar D, Hochberg M. The natural history of emergent osteoarthritis of the knee in women. *Osteoarthritis and Cartilage*. 2002 Nov 1;10(11):849-54..
8. Nicholls E, Thomas E, Van der Windt D, Peat G. The long-term course of knee pain severity in middle and old age: distinct trajectories from latent class growth modelling in population cohort data (the CAS-K study and the osteoarthritis initiative (OAI)). *Osteoarthritis and Cartilage*. 2013 Apr 1;21:S39-40.

9. Bennett PH, Burch TA. Osteoarthritis in the Blackfeet and Pima Indians. Population Studies of the rheumatic diseases. 1968:407-12.
10. Fitzgerald GK, Piva SR, Irrgang JJ. Reports of joint instability in knee osteoarthritis: its prevalence and relationship to physical function. *Arthritis Care & Research*. 2004 Dec 15;51(6):941-6..
11. Felson DT. Osteoarthritis as a disease of mechanics. *Osteoarthritis and cartilage*. 2013 Jan 1;21(1):10-5.
12. . Andriacchi TP, Mündermann A, Smith RL, Alexander EJ, Dyrby CO, Koo S. A framework for the in vivo pathomechanics of osteoarthritis at the knee. *Annals of biomedical engineering*. 2004 Mar 1;32(3):447-57.
13. Roos H, Adalberth T, Dahlberg L, Lohmander LS. Osteoarthritis of the knee after injury to the anterior cruciate ligament or meniscus: the influence of time and age. *Osteoarthritis and Cartilage*. 1995 Dec 1;3(4):261-7.
14. . Felson DT. Obesity and vocational and avocational overload of the joint as risk factors for osteoarthritis. *Journal of Rheumatology-Supplements*. 2004 Apr 1;31(70):2-5.
15. Blagojevic M, Jinks C, Jeffery A, Jordan I. Risk factors for onset of osteoarthritis of the knee in older adults: a systematic review and meta-analysis. *Osteoarthritis and cartilage*. 2010 Jan 1;18(1):24-33..
16. Roos H, Laurén M, Adalberth T, Roos EM, Jonsson K, Lohmander LS. Knee osteoarthritis after meniscectomy: prevalence of radiographic changes after twenty-one years, compared with matched controls. *Arthritis & Rheumatism: Official Journal of the American College of Rheumatology*. 1998 Apr;41(4):687-93.
17. Zhang W, Doherty M, Peat G, Bierma-Zeinstra SM, Arden NK, Bresnihan B, Herrero-Beaumont G, Kirschner S, Leeb BF, Lohmander LS, Mazieres B. EULAR evidence based recommendations for the diagnosis of knee osteoarthritis. *Annals of the rheumatic diseases*. 2009 Sep 17.
18. Bierma-Zeinstra SM, Oster JD, Bernsen RM, Verhaar JA, Ginai AZ, Bohnen AM. Joint space narrowing and relationship with symptoms and signs in adults consulting for hip pain in primary care. *The Journal of rheumatology*. 2002 Aug 1;29(8):1713-8..
19. Zhang W, Moskowitz RW, Nuki G, Abramson S, Altman RD, Arden N, Bierma-Zeinstra S, Brandt KD, Croft P, Doherty M, Dougados M. OARSI recommendations for the management of hip and knee osteoarthritis, part I: critical appraisal of existing treatment guidelines and systematic review of current research evidence. *Osteoarthritis and cartilage*. 2007 Sep 1;15(9):981-1000.
20. Ramasamy S, Ranganathan TS. *Anatomical Sciences*..
21. Altman RD, Gold GE. Atlas of individual radiographic features in osteoarthritis, revised. *Osteoarthritis and cartilage*. 2007 Jan 1;15:A1-56..
22. Schiphof D, de Klerk BM, Kerkhof HJ, Hofman A, Koes BW, Boers M, Bierma-Zeinstra SM. Impact of different descriptions of the Kellgren and Lawrence classification criteria on the diagnosis of knee osteoarthritis. *Annals of the rheumatic diseases*. 2011 May 1;annrheumdis147520..
23. Bedson J, Croft PR. The discordance between clinical and radiographic knee osteoarthritis: a systematic search and summary of the literature. *BMC musculoskeletal disorders*. 2008 Dec;9(1):116.
24. Peat G, McCarney R, Croft P. Knee pain and osteoarthritis in older adults: a review of community burden and current use of primary health care. *Annals of the rheumatic diseases*. 2001 Feb 1;60(2):91-7.
25. Lizi P, Kobza W, Manko G. The Influence of Extracorporeal Shockwave Therapy and Kinesiotherapy on Health Status in Females with Knee Osteoarthritis: A Randomized Controlled Trial. *Int J Gen Med Surg* 2017; 1.;108.
26. Pham K, Hirschberg R. Global safety of coxibs and NSAIDs. *Current topics in medicinal chemistry*. 2005 Jun 1;5(5):465-73.
27. Skou ST, Roos EM, Laursen MB, Rathleff MS, Arendt-Nielsen L, Simonsen O, Rasmussen S. A randomized, controlled trial of total knee replacement. *New England Journal of Medicine*. 2015 Oct 22;373(17):1597-606.
28. Nutton RW, Van der Linden ML, Rowe PJ, Gaston P, Wade FA. A prospective randomised double-blind study of functional outcome and range of flexion following total knee replacement with the NexGen standard and high flexion components. *The Journal of bone and joint surgery. British volume*. 2008 Jan;90(1):37-42.
29. Bennell KL, Egerton T, Wrigley TV, Hodges PW, Hunt M, Roos EM, Kyriakides M, Metcalf B, Forbes A, Ageberg E, Hinman RS. Comparison of neuromuscular and quadriceps strengthening exercise in the treatment of varus malaligned knees with medial knee osteoarthritis: a randomised controlled trial protocol. *BMC musculoskeletal disorders*. 2011 Dec;12(1):276.
30. Williams GN, Chmielewski T, Rudolph KS, Buchanan TS, Snyder-Mackler L. Dynamic knee stability: current theory and implications for clinicians and scientists. *Journal of orthopaedic & sports physical therapy*. 2001 Oct;31(10):546-66.
31. Rogers MW, Tamulevicius N, Semple SJ, Krkeljas Z. Efficacy of home-based kinesthesia, balance & agility exercise training among persons with symptomatic knee osteoarthritis. *Journal of sports science & medicine*. 2012 Dec;11(4):751.