

# A simple Approach on Premises Deployment Model Techniques Provider with Encrypt Transfers Technology

Dharamvir<sup>1</sup> Dr. M S Shashidhara<sup>2</sup>

<sup>1</sup>Asst. Professor, <sup>2</sup> Professor & Head, Department of MCA

<sup>1,2</sup> The Oxford College of Engineering, Bommanahalli Hosur Road Bangalore-68

**Abstract :** Proactive consideration of all the related organization regarding numerous foundations in the reference to various worldwide customer applications will give all the related arrangements required in a uniquely sorted out changes and classes. The principle objective is to guarantee that all the related block attempts as for the segment of capacity can be improved and checked. The application recognition with all related system impact independent of the area and reconciliation worry as various customers will utilize diverse system procedure and framework mixes. The application will give the intelligent teach of the efficiency tuning that is required for appropriate recognizable proof and Solutions arrangements for various mechanical articles. The application will be founded on multi ability part administration as the weighted can be more as for various customers.

**Keywords:** *Analysis, Monitoring, Capacity enhancement, Server setup, Security, proclamation Information tunneling, Reports, categorization*

## 1. INTRODUCTION

### PROJECT DESCRIPTION

The application interface design is to provide multiple facilities to the uses of different companies and prospective to help manage all the related application development, collaboration, data management, security, version design, scalability etc. The application design will help the users to manage all the company related work management with all related and required tools as the application will incorporate different application solutions for the working. Application also integrates and provides a subjective working where all methods for the custom design of the resources will be provided to the users so that requirements can be structured for the working based on the platform as a service interface. The application provides all the related integration that is required for the working as the application can be designed and can be used on the same platform with different authentication and the relative configuration required for multi user working. All the related assets with respect to the development will be provided to the users for the design and development with relation to the customized working.

Application incorporates multiple data pages design that will help to design different required designs for example multiple reports section, chart system, form designs, calendar systems, schedule managements etc. can be designed. The application provides a detailed table system management there all the related data tables will be managed with respect to multi customized options provided for example integrated download set of data, auto numbering and

reset, find, new entries etc. The design system provided will help the companies to establish the related modeling structure required.

The application also takes in consideration the related authentication options provided which will help the uses to integrate different methodology with respect to the user authentication as the applications designed can be used for the commercial where multiple users are required to be integrated and validated. The application also provide multiple design styles that will help for the fast design and implementation as the needed style is pre built and is provided to the users.

The application supports multiple users working with the help of the control and granted rights and process design options. The applications will structure all the related users with different permission. The application helps to design all different environment application design and integration with the help of the connection provided where all the factors are integrated. The application is provided for the referral working where the company can have multiple options of usage and its meaning according to the requirements. These aspects are divided into 2 modules, they are

### The Basic Classifications

The application will help the partners to have a chance to upgrade the separate application improvement with every one of the prospects required in an all-out based consideration where the application will give the related check to more reasonable advancement.

The application will give dashboard where all the separate insights about the related framework instruments are given to the clients to better understanding and review

The application will give every one of the alternate routes required that can be utilized as a specific from the dashboard itself

The application will approached the Associates for multi alternative where coordinate combination should be possible with the forthcoming application furnished with the related new advancement

That plan configurations will be shown with the ordering subtle elements on the dashboard

The relationship of the improvement that will be given to the clients would have different area based where it will naturally diverted as the new application outline advancement will be given to the application

The incorporation of the affiliation will contain the plans of the accompanying

Pages with the reports reconciliation, distinctive exclusively based shape definition will be given particular concerned and tablet must be incorporated for the simplicity of the work

Numerous perspectives definition support will be given

Auto expansion as for the immediate coding of that will be given; the application will support various coding sorts that can be incorporated

Various formats in combination will be given to the client so they can utilize the layouts for the general convenience of the application movement execution

Component and standards coordinated outcome based interface must be given to the clients so that the clients can characterize all the related components that are required to be delineated on pages with all the general and field choices that must be incorporated with a few guidelines

### Localizing

The application will give Authenticator where all the diverse organizing of the Associates can be furnished with different level validation base and the standards that must be characterized can be contribution by the preeminent client

The application will likewise give the immediate import and fare of the source based information that can be straightforwardly incorporated with the assistance of the application interface

Numerous fare choices will be given regard to the customization and all the detail forthcoming of the substance will be appeared

Application even give the point by point configuration arrange where the outline sheet can be tweaked by necessity with all the sort names graphic essential educational and so on can be characterized for the plan planned

Application will support the direct CSS coding concerning the different plan organize in connection to the style generalizing

The application will support the considerations of numerous configuration data regarding give the adaptability in the work use in administration

Application charge supplier limiting choice where the applications can be set up on the confining mode for more secure and protection required which will give characterized working arrangement. The configuration wizard window will be accommodated the progression incorporations and administration

### Advantages

- The different upgrades and changes that are required can be designed and operated properly and easily
- The application design is geographically designed so that all different companies with respect to different domain working can be integrated
- The application helps to control the workflow and the related application integration at one place
- Application is very cost effective as it is chargeable according to the usage in based on service working
- All the related design style and templates are provided to the users
- With the help of the application platform the design of the applications will be mark on the custom basis where the exact requirements will be full filled with respect to the working

## 2. LITERATURE SURVEY

Disseminated registering is a standout amongst the most sizzling topics in IT as it on an exceptionally fundamental level changes the ways associations and associations are managing their figuring needs (Han, 2010). Circulated processing is truly enlisting as a Service Oriented Architecture. Consequently, it gains the qualities and inadequacies of this perspective. The service mechanism perspective is about moving a long way from the thing change prologue to a presentation which is revolved around organization movement. Advantage service mechanism offers many purposes of enthusiasm for associations.

Meanwhile, there are numerous troubles in its use and organization. Remembering the true objective to fulfill a compelling service mechanism use numerous segments must be seen as like honest to goodness business and IT game plan, service mechanism execution issues and possible impacts of service mechanism on an affiliation. In light of the above, Cloud Computing offers numerous inclinations to affiliations and organizations yet it in like manner has issues that must be taken into concern. Circulated figuring relies on upon the points of interest that the budgetary parts of economies of scale offer. Regardless, meanwhile it encounters the disservices that overconcentration of benefits and power can make.

Advantage service mechanism is a game plan of gauges and theories for arranging and making programming as interoperable organizations. This kind of programming building gets from the organization arranged perspective. Advantage acquaintance is an arrangement perspective with collect PC programming as organizations. Like other layout perfect models (e.g. address presentation), advantage acquaintance gives a speaking to path with management motorize business reason as scattered structures (Erl, 2012). Arsanjani et al (2004) portray service mechanism as the compositional style that support roughly coupled organizations to enable business versatility in a bury operable, advancement doubter way.

Advantage service mechanism includes a composite game plan of business-balanced organizations that support a versatile and effectively re-configurable end-to-end business frames affirmation using interface-based organization depictions. Advantage service mechanism perspective can be enlarged and associated on the level of a business affiliation and structure. So to speak, associations can use service mechanism to change their model and approach customers by offering organizations instead of things.

Advantage service mechanism has a movement of purposes of enthusiasm of over the conventional thing based arrangement of activity and approach. Accenture (2012) sees the going with three which are a) deftness b) cost diminish c) Return of Investment (ROI) bolster. Preparation suggests that service mechanism engages relationship to respond quickly to new business goals, make specific new limits and utilize existing organizations for veritable responsiveness. Incurred significant damage diminish implies the reuse of existing assets, extending viability and lessening application headway costs.

## 2. EXISTING SYSTEM

Adding compliance customization in respect to the working identities is not possible and even for the required identity support multiple utility configured and purchased. Some of the main points of the existing system

- Compatibility with respect to different environments is a concern
- Restriction based on the customization
- Central work stage for selection and customization is not supported
- Implementation and connections are not supported
- Custom setup is not provided
- Structuring with respect to tables and pages are not supported
- Pre-built support with respect to multiple designs are not provided
- Multi user support is not provided

### 3. PROPOSED SYSTEM

Proposed system design is to provide all the related management concerns for a procedure incorporated working style. Application provides the enhanced collaborative design Wizard format working. Some of the main points of proposed system

- Application can be used on a service places whenever required
- Multiple connection status are provided
- Step work for proper understanding will be provided
- Different functionalities will be integrated
- Multiple security provisions are provided
- Multiple working securities is provided to the users
- Structuring and designing can be operated properly
- Multiple utilities are provided for the use

### 4. System Transmission Identification

The application requires the preparing framework that will be characterized by the client as required as for various instruments that must be considered for the organization working. Event give various alternatives where the plan can be utilized that will be given to the clients so that the working can be passed in without the learning of Technical observations the working can be enhanced and overseen. Application gives all the related association so that is required so that after the improvement of the application that application can be utilized as a part of the earth where is really required and intended for.

Application will give all the related security setup status required for the working and combination of the application. Different Security System are given so that all the related confirmations and extremely patient can be overseen legitimately. The application will give the plan point of view where the clients can structure of the related outlines concerning the pages and as for the working. The application will help the utilizations to play out all the related outline organizes that are required to be incorporated into the specific plan application required for the working of the coveted action.

Legitimate data ought to be accumulated as for the advancement and identified with that data the proficient client to know something about the application configuration can chip away at the application to give all the related orders and as indicated by the variables chose to working will be overseen. The application is exceptionally adaptable and working and all the related work can be organized as indicated by the procedure configuration require and the application will handle every one of the information as indicated by the working style chose. Different work arrangements and alternatives can be coordinated with the assistance of all the related plan highlights gave to the clients.

Application gives a custom database framework where all the related information this will be composed and upgraded. Application chips away at the administration framework so that at whatever point the organizations oblige something to be outlined and created on a quick however this application can be utilized as a part of an extremely easy to utilize development strategies provided.

### Scope and objective

- To provide all the related process design required
- To provide all the related instrumental application from one place
- To provide all the related service integration
- Provide all the related application versioning in security prospective
- Provide all the related storage and scalability for the working

### 5. Nonfunctional requirements

#### Reliable

Application is designed to handle any situation with respect to the information management and working. All the related working for the work situation will be handled by the application properly

#### Availability

Application is available on the cloud working platform, related working will be based on the service as required by the company they have to provide account integration that will be integrated by the valid authentication, and the meantime for working has been calculated to 15 second

#### Security

Security perspective has to be taken as the application requires to be designed for different work usage and all the related integrated application should support the related features of the security. The application will be integrated with instructions for the design.

#### Legal

Application will have the legal documents that are required to be discussed by the user and has to be implemented with respect to the copyrights of the design and other working requirements

#### Maintain

Application is maintained by the hosting company where all the related upgrade send update system for including more resources and the support management will be provided. For the organizational working that mistake I will be having the rights for update

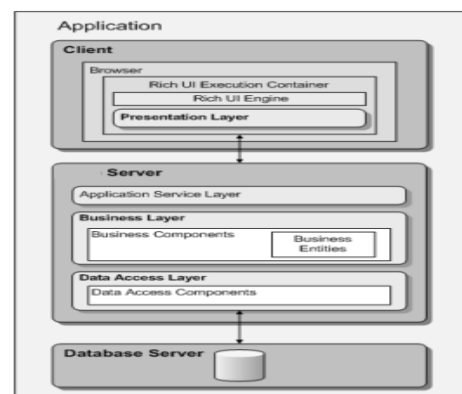


Fig 1 Architecture diagram

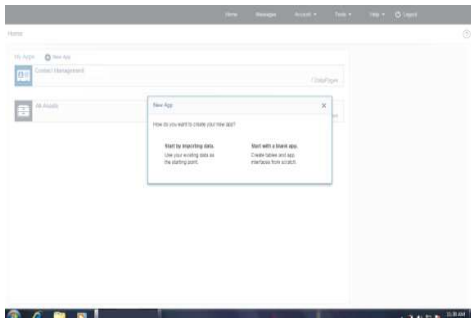


Fig 2: Options for new application

The developer can select the application of which type if the developer wants to import prebuilt software otherwise the developer can create their own specific requirement applications name has generated.

This application can also import the Data, Application, and object. The developer can select the form type on basis of application. It consists of Submission form, Single update record, Password recovery.

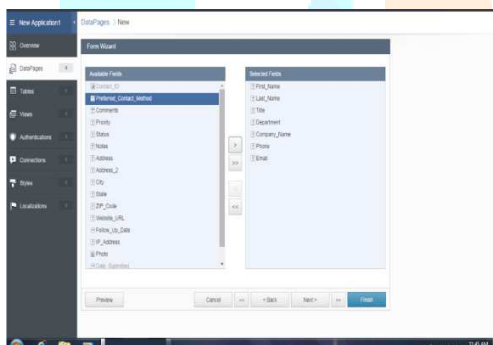


Fig 3: System Design

The form shows the fields then design the page using the field option.

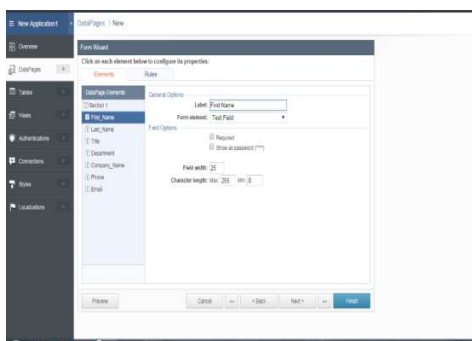


Fig 4: Manage configuration

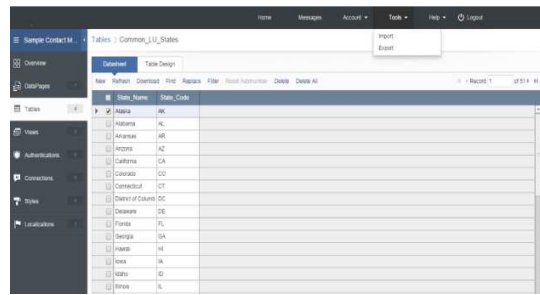


Fig 5: Check tools option

### 6. Conclusion and Future Enhancement

We can describe our application platform as a interface where all needed infrastructural association and development will be supported, the application provides all the related configuration that is required for transfer and usage of the designed tools with the help of the related components provided to the users. The application will help the guided development that is very much important for the non-technical peoples to associate with our application transform. Application in corporate all the needed perspective of the development as the company will define the tools and the development process accordingly.

### 7. Reference

- [1] S.G. Lee, Y. Mao, A.M. Gokhale, J. Harris, M.F. Horstemeyer (2009), Application of encrypt transform technology of cracked constituent particles/inclusions in wrought aluminum alloys, Elsevier, Materials Characterization, 60(9), pp.964-970.
- [2] D. Deb, S. Hariharan, U.M. Rao, Chang-Ha Ryu (2008), Automatic detection and analysis of discontinuity geometry of rock mass from digital images, Elsevier, Computers & Geosciences, 34(2), pp.115-126.
- [3] Zhanfeng Shen, Jiancheng Luo, Chenghu Zhou, Guangyu Huang, Weifeng Ma, Dongping Ming (2005), System design and implementation of digital-image processing using computational grids, Elsevier, Computers & Geosciences, 31(5), pp. 619-630.
- [4] D.W.Moolman, C. Aldrich, J.S.J. Van Deventer, and W.W. Stange (1994) , Digital Image Processing as a tool for online monitoring of froth in flotation plants, Elsevier, Minerals Engineering, 7(9), pp. 1149-1164.
- [5] S.Vandenberg and C. F. Osborne(1992), Digital image processing techniques, fractal dimensionality and scale-space applied to surface roughness, Elsevier, Wear, 159(1) , pp.17-30.