



INTERNATIONAL JOURNAL OF CREATIVE RESEARCH THOUGHTS (IJCRT)

An International Open Access, Peer-reviewed, Refereed Journal

Object Detection Using Machine Learning

Asst. Professor S.G.Linge
Computer Science & Engineering
SKNSCOE
Pandharpur, India

Pooja Shelake
Computer Science & Engineering
SKNSCOE
Pandharpur, India

Manasi Sartape
Computer Science & Engineering
SKNSCOE
Pandharpur, India

Arpita Vasekar
Computer Science & Engineering
SKNSCOE
Pandharpur, India

Pranali Tarange
Computer Science & Engineering
SKNSCOE
Pandharpur, India

ABSTRACT

Our project aims to implement object detection using the YOLO (You Only Look Once) algorithm, facilitating real-time detection of specified objects from both camera feeds and images. Object detection is a crucial task in computer vision with numerous applications ranging from surveillance to autonomous vehicles. YOLO is known for its efficiency in processing speed while maintaining high accuracy. The project involves training the YOLO model on a dataset containing annotated images of target objects. These objects may include commonly encountered items like cars, persons, and more, depending on the project's scope. Once trained, the model can identify and localize these objects within an image and camera.

The implementation includes a user-friendly interface that allows users to input live camera feeds or static images for object detection. The system provides real-time feedback on detected objects, including their class labels and bounding box coordinates. Additionally, the accuracy of detection is displayed, giving users confidence in the reliability of the results.

Overall, this project demonstrates the practical application of machine learning techniques, specifically the YOLO algorithm, in real-world scenarios where fast and accurate object detection is essential. The system's ability to operate in real-time makes it suitable for various applications, including surveillance, traffic monitoring, and object tracking.

Keywords -

Object Detection, Machine Learning, YOLO Algorithm etc.

INTRODUCTION

1. What is Object Detection?

Object detection in machine learning, especially in a YOLO (You Only Look Once) project, is a way to teach a computer to recognize and locate objects in images or videos. To make this happen, you need a dataset of images or video frames where objects are marked with bounding boxes and labels. YOLO is a specialized algorithm that takes these images and learns to predict these boxes and labels for objects within them. During training, YOLO adjusts its internal parameters to get better at this task. Once trained, the YOLO model can analyze new images or video frames and quickly tell you where objects are and what they are. This is used in various applications like autonomous driving, security systems, and more, where knowing what's in the visual data is crucial.

2. What is YOLO?

YOLO, which stands for "You Only Look Once," is a clever machine learning method used for quickly finding objects in pictures or videos. Unlike older methods, YOLO doesn't need to check images multiple times. It looks at them just once and can spot objects in an instant. This is handy for things like self-driving cars and security cameras where you need fast and accurate object detection. Page No: 2 Here's how it works: YOLO divides an image into small pieces and figures out where objects are in those pieces. It also tells you what those objects are, like "car" or "dog." During training, it learns from lots of labeled images to get better at this job. Once it's trained, you can use it to

find objects in new images or videos quickly and tell you what they are. That's why YOLO is a useful tool in many areas where you need to find and identify objects in visuals.

3. How Does YOLO Works?

YOLO (You Only Look Once) works like this: Imagine dividing a picture into tiny squares. YOLO checks each square and quickly decides if there's an object in it and what that object is. It also tells you how sure it is about its decision. YOLO learns to do this by practicing on lots of pictures with labeled objects. After training, you can use YOLO to look at new pictures or video frames. It will fast-track where objects are, what they are, and how confident it is in its findings. This is super useful for things like self-driving cars and security cameras where you need to find and recognize objects quickly.

HISTORY

Early Approaches (Pre-2000s):

Before the advent of deep learning, object detection primarily relied on handcrafted features and traditional machine learning algorithms. Techniques such as edge detection, histogram of oriented gradients (HOG), and Haar cascades were commonly used for feature extraction and object localization. These methods often struggled with variations in scale, viewpoint, and occlusion, limiting their effectiveness in complex real-world scenarios.

Viola-Jones Face Detection (2001):

The Viola-Jones algorithm introduced a landmark technique for real-time face detection using a cascade of simple classifiers trained on Haar-like features.

This method demonstrated the feasibility of rapid object detection in real-world applications and laid the groundwork for subsequent advancements in the field.

Pioneering Deep Learning (2012):

The breakthrough of deep learning, particularly convolutional neural networks (CNNs), revolutionized object detection by enabling end-to-end learning of features directly from raw data. The seminal work of AlexNet in the ImageNet Large Scale Visual Recognition Challenge (ILSVRC) demonstrated the superiority of deep learning approaches in image classification tasks.

Region-based CNNs (R-CNN, Fast R-CNN, Faster R-CNN):

R-CNN, proposed by Girshick et al. in 2014, introduced the concept of region-based convolutional neural networks for object detection. Successive iterations such as Fast R-CNN and Faster R-CNN improved speed and accuracy by integrating region proposal networks (RPNs) for generating object proposals.

YOLO (You Only Look Once) Algorithm (2016):

The YOLO algorithm, introduced by Redmon et al., represented a paradigm shift in object detection by framing it as a single regression problem. YOLO

processes the entire image at once and directly predicts bounding boxes and class probabilities, resulting in faster inference speeds compared to region-based approaches.

YOLOv2, YOLOv3, YOLOv4, YOLOv5:

Subsequent iterations of the YOLO algorithm introduced improvements in accuracy, speed, and robustness. YOLOv2 incorporated batch normalization and better anchor box clustering, while YOLOv3 introduced feature pyramid networks (FPNs) and further optimizations.

YOLOv4 and YOLOv5 continued the evolution, integrating state-of-the-art techniques such as CSPDarknet and efficient backbones for enhanced performance.

Applications and Advancements:

Object detection using machine learning has found widespread applications in various domains, including surveillance, autonomous vehicles, medical imaging, and augmented reality. Ongoing research focuses on improving the accuracy, efficiency, and generalization capabilities of object detection models, as well as addressing challenges such as small object detection, occlusion, and domain adaptation.

PROBLEM STATEMENT

Implementation of objects detection system using YOLO algorithm and apply the algorithm on image data and video data to detect objects.

PROPOSED SYSTEM

- 1. Introduction:** Provide an overview of the project's goals and objectives. Explain the significance of object detection and the choice of YOLOv8 as the algorithm.
- 2. Data Collection and Preprocessing:** Collect a diverse and representative dataset containing images or videos relevant to the object detection task. Annotate the dataset with accurate bounding boxes and class labels for the objects to be detected.
- 3. Model Selection and Architecture Design:** Choose the YOLOv8 variant (e.g., YOLOv4, YOLOv5, or custom YOLOv8) based on project requirements. Design the neural network architecture, including backbone, detection head, and loss functions. Fine-tune or customize the model architecture if necessary.
- 4. Model Training:** Initialize the YOLOv8 model with pre-trained weights if available. Train the model on the annotated training dataset, using appropriate loss functions (e.g., YOLO loss). Implement data augmentation techniques to enhance model generalization.
- 5. Evaluation Metrics:** Define evaluation metrics, including mean Average Precision (mAP), IoU (Intersection over Union), and precision-recall curves. Evaluate the trained YOLOv8 model on the validation and test datasets.
- 6. Real-time Implementation:** Optimize the inference pipeline to achieve real-time object detection.

Implement non-maximum suppression (NMS) to remove duplicate and low-confidence detections.

7. User Interface Development: Create a user-friendly web-based or desktop interface for users to upload images or videos and visualize object detection results. Include features for setting confidence thresholds and choosing object classes.

8. Performance Testing: Conduct thorough performance testing to measure the model's accuracy and real-time processing speed. Assess the system's ability to handle various object classes and environmental conditions.

9. Deployment and Integration: Deploy the trained YOLOv8 model in practical applications, such as surveillance systems or industrial automation. Ensure easy integration into different platforms or devices.

10. Documentation and Reporting: Create comprehensive documentation detailing the project's methodology, model architecture, training process, and evaluation results. Prepare a project report summarizing the entire object detection process, including challenges, solutions, and lessons learned.

RESEARCH METHODOLOGY

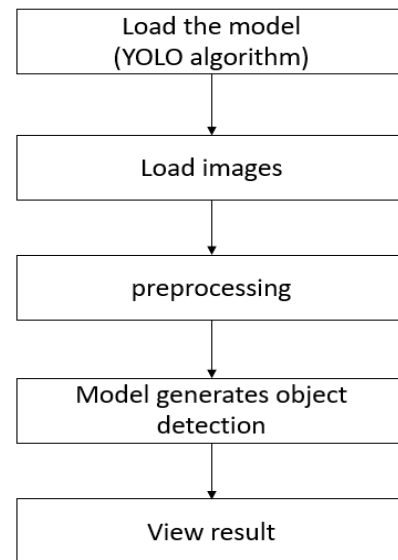
1) Load YOLO Algorithm: This involves importing or using a pre-trained YOLO model, which contains the architecture and learned parameters for object detection.

2) Load Image: You'll bring in the image data you want to perform object detection on. This could be from a file or captured in real-time from a camera.

3) Processing Image: The loaded image needs to be prepared for input into the YOLO model. This typically involves resizing, normalization, and other pre-processing steps to match the model's input requirements.

4) Model Generates Object Detection: The YOLO model analyzes the processed image and generates predictions regarding the objects it identifies within the image. It provides bounding box coordinates and class probabilities for the detected objects.

5) View Result: After the model predicts the objects in the image, you'll likely draw bounding boxes around these objects and label them according to their detected class. This step visually represents the detected objects on the original image.



DEVELOPMENT TOOLS

Anaconda: Anaconda serves as a comprehensive Python distribution that includes popular libraries and tools for data science, machine learning, and computer vision. It simplifies package management and environment setup, making it ideal for developing object detection systems.

Jupyter Notebook: Jupyter Notebook provides an interactive computing environment that allows you to create and share documents containing live code, equations, visualizations, and narrative text. It is particularly useful for prototyping and experimenting with different aspects of the object detection project.

PyCharm: PyCharm is a powerful integrated development environment (IDE) for Python development. It offers advanced features such as code completion, debugging, version control integration, and project management, facilitating the development of complex machine learning projects like object detection.

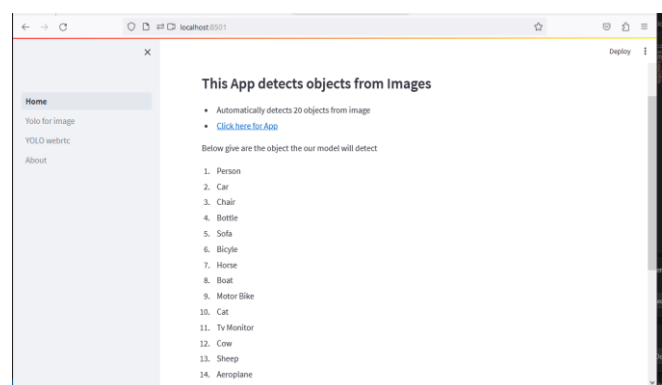


Figure 1. Home Page

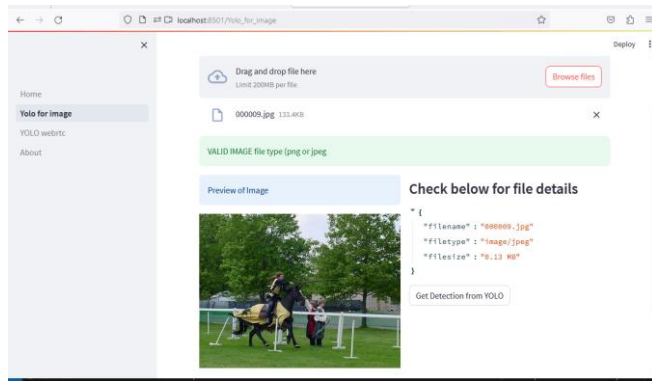


Figure 2. Object Selection

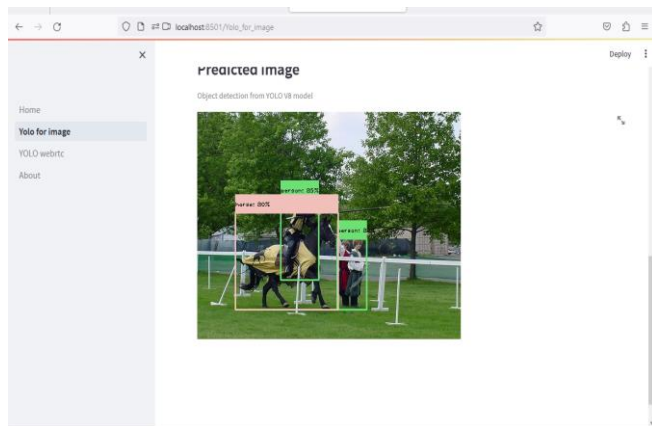


Figure 3. Detection of Object

REFERENCES

1. Redmon, Joseph, and Santosh Divvala. "You only look once: Unified, real-time object detection." Proceedings of the IEEE conference on computer vision and pattern recognition. 2016.
2. Redmon, Joseph, and Ali Farhadi. "YOLOv3: An incremental improvement." arXiv preprint arXiv:1804.02767 (2018).
3. Singh, Karanvir, et al. "YOLOv5: A universal object detection framework for self-supervised." .
4. YOLO - You Only Look Once (Official Website): <https://pjreddie.com/darknet/yolo/>
5. The official website provides resources and code for YOLO implementations.
6. Romain Vial, Hongyuan Zhu, Yonghong Tian and Shijian Lu "Search Video Action Proposal with Recurrent and Static YOLO", 2017 IEEE International Conference on Image Processing. (ICIP), Beijing, China, ISBN (e): 978-1- 5090-2175-8, September-2017.

7. E. Y. Li "Dive Really Deep into YOLO v3: A Beginner's Guide". Available at:

<https://towardsdatascience.com/dive-really-deep-into-yolo-v3-a-beginners-guide-9e3d2666280e>. [Assessed: 03/18/21]

8. Romain Vial, Hongyuan Zhu, Yonghong Tian and Shijian Lu "Search Video Action Proposal

with Recurrent and Static YOLO", 2017 IEEE International Conference on Image Processing

(ICIP), Beijing, China, ISBN (e): 978-1- 5090-2175-8, September-2017.

CONCLUSION

Object detection using machine learning has emerged as a powerful and versatile technology with wide ranging applications.

Through the utilization of deep learning algorithms and neural networks, it has become increasingly accurate and efficient in identifying and locating objects within images and camera.

