



INTERNATIONAL JOURNAL OF CREATIVE RESEARCH THOUGHTS (IJCRT)

An International Open Access, Peer-reviewed, Refereed Journal

STAFF ACADEMIC MODEL

Divya K. Anuse(student), computer science and engg., Sanjay Ghodawat Institute
Aditi R. Navghane(student), computer science and engg., Sanjay Ghodawat Institute
Shraddha A. Mhetri(student), computer science and engg., Sanjay Ghodawat Institute
Shambhavi S. Tikudave (student), computer science and engg., Sanjay Ghodawat Institute
Guide: Mr. Shridhar R. Sarate(lecturer), computer science and engg., Sanjay Ghodawat Institute

Abstract: The Project is aimed to develop Staff Academic Module. The system will be an online Android application that can be accessed by the teaching staff with proper login provided. The system can be used as an application for the college teaching Staff, who made their work easy and support academic collaboration. For teaching staff can access academic resources and also make the marksheet in this app. With this system, users can effortlessly access academic related resources and can generate marksheet document in which sum will automatically display. Generating excel marksheet by calculating sum can be time consuming. Streamlines this app significantly reducing the time required to create marksheet documents

I. INTRODUCTION

Teachers often struggle with availability of up-to-date resources. Additionally the process of filling out marks and managing student assessments can be time consuming and prone to errors, making it difficult to keep accurate records.

In teaching Staff Academic Module app access to academic resources provides several key benefits for teachers. Teachers can quickly find and download essential materials like Textbooks, syllabus and model answer paper etc. saving time on searches. Ready access to resources allows for more efficient lesson preparation, ensuring that teachers are well equipped for their classes.

In Staff Academic Module, the ability to create a marksheet that automatically sums marks as they are entered offers several advantages like Time Efficiency- Teachers can save time by eliminating manual calculations. Automation summation reduce risk of errors in calculations, ensuring that grades and precise. It also allows to make schedule. In the Staff Academic Module, the schedule-making feature allows teachers to create and manage their schedules for specific weeks or months effectively. Allowing teachers to focus more on their teaching and less on administrative tasks.

II. Review of Literature

Study of Existing System

- 1.Download: In other teaching app they are not going to provide download option, but in staff academic model it will provide download option.
- 2.Manual Document Creation: We need to create excel sheet for filling students practical and unit test marks in our excel sheet. It is going to reduce the time to create a mark sheet.
- 3.Papers Available: In other app there are not many, question paper and module answer paper are not available.

Findings from Literature Review

By studying and taking overview of above existing system we have concluded that they have features as listed above. The absence of an Staff Academic Model means that people depend on website, which may not be accessible. The introduction of Staff Academic Model aims to application for the college teaching Staff, who made their work easy and support academic collaboration.

Problem statement

The proposed system acts as a solution for academic teaching staff from saving their time from making marksheet for their internal marks. If they have problem related academic problem related syllabus they can solve it within a second. The system will save your time required for finding the information related academy. Our Staff academic model helps teacher to save their time. This will make easy to use when you need information related any branch.

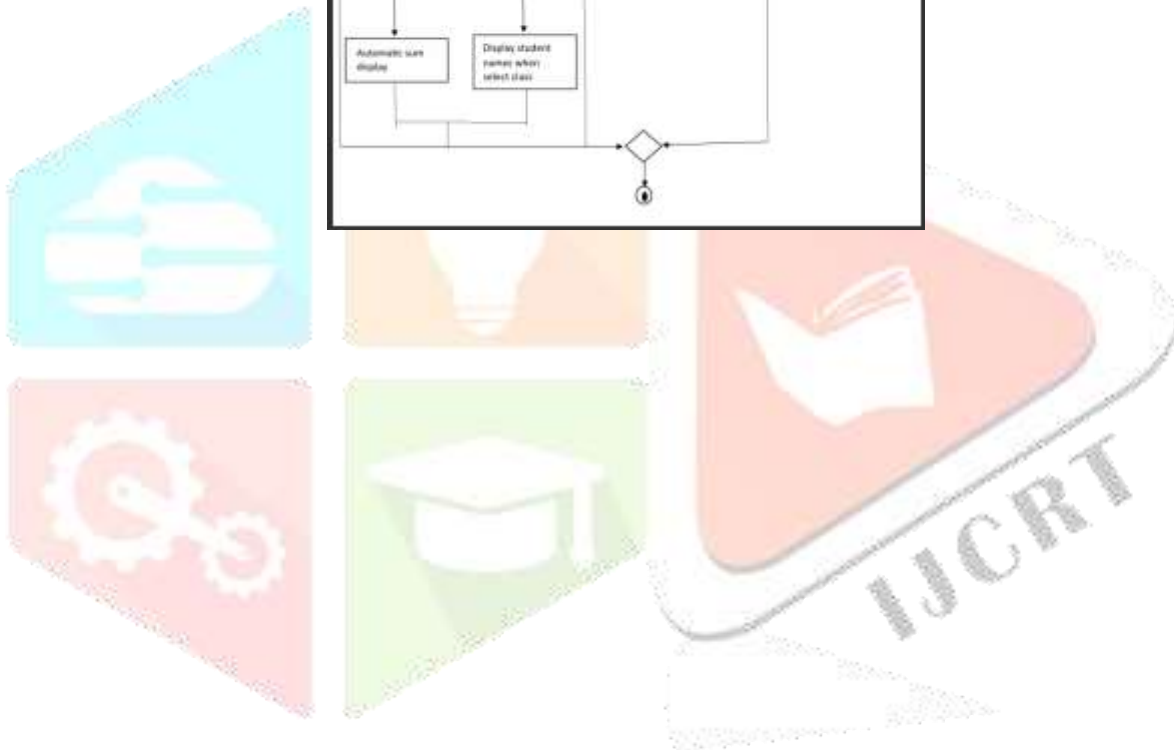
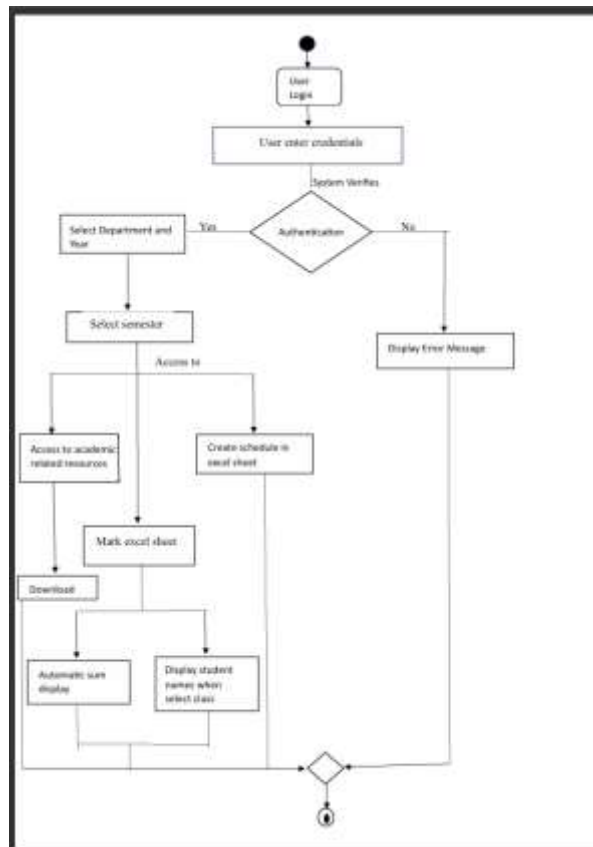
Project Scope

The scope for a Staff academic model is promising and Its potential lies in the accessibility and affordability of teaching information it is for teaching staff of academy those who understand about information is from which department. By offering a user-friendly platform for document generation, the Staff academy can significantly reduce the time and effort required for creating excel marksheet. Furthermore, its educational component can users with an understanding of other department subjects too.

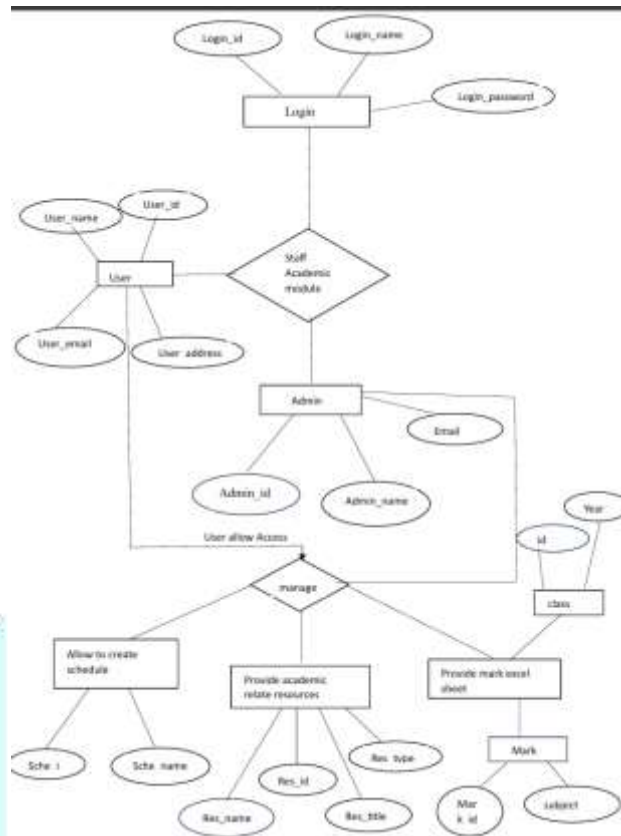
III. Objective of Proposed System

- 1. Streamlined Document Generation:** Develop an efficient and user-friendly platform that simplifies the process of creating marksheet excel sheet, reducing the time for calculation they need for making this marksheet.
- 2. Legal Empowerment and Education:** Teacher can get information about academy department their syllabus, model question paper etc. They can make marksheet on excel sheet with department and year they want.
- 3. Cost-Effective Solutions:** Provide an affordable and correct information that does not have any cost and time reducing. It is made for teaching staff.

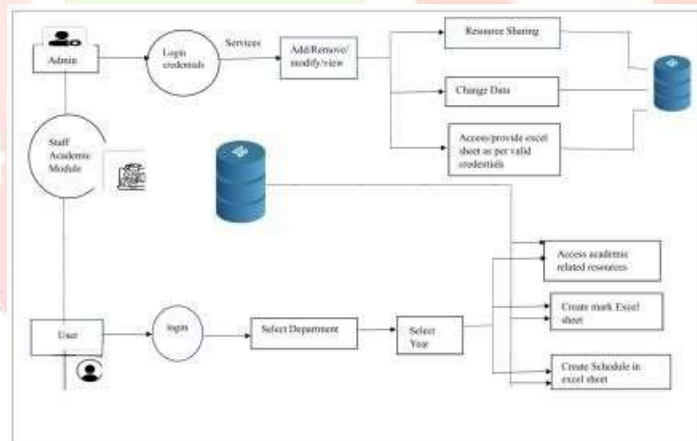
IV. Methodology - Flow diagram



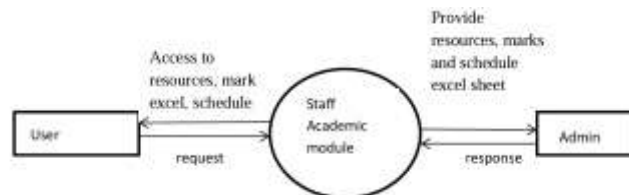
ER Diagram-



System Architecture



DFD Diagram



Modules of software system

1. User: The user request to STAFF ACADEMIC MODEL for resources marks excel sheet, schedule.

2. STAFF ACADEMIC MODEL: The system is accept the request and response to user and then the user can access resources, marks excel sheet, schedule.

V. Requirments

Frontend

- HTML
- CSS
- Java

Backend

- MySQL

Hardware Requirement

- RAM: 4 GB or more
- CPU: 2GHz or Faster
- Architecture: 32-bit or 64-bit
- Processor: Intel core i5 or higher
- Hard Disk: Min 256GB or more

VI. Application of proposed System

The staff academic module app can access for staff. It will be help them by summarising any technical book or questions paper by short summary. Our staff academic like superfast for staff by providing and download essential learning material etc.

1. Resources providing: In staff academic module the staff can spend more time for creating notes and paper. But in this app we are going to providing textbook, questions paper and model answer paper and it is helpful for staff.

2. Automatic sum of mark when we enter: In staff academic module this app will be automatically display the students practical marks it also calculated sum and display the average of a student.

3. Automatic display name of student when we select class in excel sheet: In this the staff will be required less time. This app will provide the excel sheet to the teachers can select a particular class and it will display the name of student.

4) Schedule they can make: The staff are going to create the schedule for specific week and month efficiently. The staff can easy to rearrange the point that they can teach in class

VII Advantages and Disadvantages

Advantages

1. Resources providing
2. Automatically display sum of marks when we enter
3. Automatic display of names of students when we select class in Excel sheet.
4. schedule they can make

Disadvantages

1. Misinterpretation of Context
2. Initial Learning Curve

VIII. Conclusion and future work

In Conclusion, the Staff Academic Model is useful for teachers. It makes teachers works easier and faster. While it brings benefits like saving time, providing Notes, Syllabus, Model Answers, Question Paper, for every department and Additionally the process of filling out marks and managing student assessments can be time consuming and prone to errors, making it difficult to keep accurate records etc. It acts like a user-friendly tool. They also provide cost-effective solutions to help individuals.

IX. Bibliography

- https://www.google.com/url?q=https://myskoolapp.com/staff-management-system&sa=U&sqi=2&ved=2ahUKEwiPy5ntwPSIAxUS4zgGHda8AM4QFnoECDkQAQ&usg=AOvVaw3E84194FKUIp5nsc9AWx_R
- <https://www.geeksforgeeks.org/what-is-dfd-data-flow-diagram/>
- <https://images.app.goo.gl/DWTL5R85Eyh5QpPB9>
- <https://images.app.goo.gl/JhaweTazwpHyc3Xd8>