



INTERNATIONAL JOURNAL OF CREATIVE RESEARCH THOUGHTS (IJCRT)

An International Open Access, Peer-reviewed, Refereed Journal

MODIFIED GREY WOLF OPTIMIZATION ALGORITHM BASED CONTROLLER PARAMETERS TUNING FOR MULTIAREA AUTOMATIC GENERATION CONTROL FOR WIND SOLAR HYBRID SYSTEM

S.Syed Musthafa Gani¹, S.Faizal Mukthar Hussain², N.Ahamed Hussain Asif³,S.A.Mohamed Uveise⁴,S.Ramamoorthi⁵

*1,3 Assistant Professor,Department of EEE, Mohamed Sathak Engineering College ,Kilakarai

*2,4,5 Assistant Professor, Department of CSE,Mohamed Sathak Engineering College, Kilakarai

Abstract— The first method of calculation for Modified Grey Wolf Optimization (MGWO) has a modest number of limitations of low tackling precision, horrible neighbourhood looking through capability and reasonable combination efficiency. In order to resolve these impediments of MGWO, a further version of GWO calculation was suggested by modifying the Grey Wolf Optimization Algorithm's enclosing conduct and positioning upgrade conditions. The accuracy and combination execution of modified variation has been progressively checked on a few prominent old types including sine dataset and shaft configuration capabilities. This paper presents a use of changed Grey wolf analyser (GWO) to discover the parameters of the critical representative circle for effective AGC of two interconnected force structure territories. This paper is concerned with ensuring the ideal qualities for the corresponding indispensable subsidiary control parameters of burden recurrence control and AVR multi-zone power system using the altered Grey Wolf Algorithm (GWO) process. The LFC circle controls genuine force and recurrence, and the AVR circle controls force and voltage sensitivity. MGWO's enhancement execution is contrasted, and various measurements are based on standard deviations in parameter and target capability estimates.

Keywords—Modified Grey Wolf Optimization (MGWO),Grey Wolf Optimization (GWO), Particle swarm Optimization (PSO), Load Frequency Control (LFC), Automatic Voltage Regulator (AVR).

INTRODUCTION

Developmental calculations for a given region rely on the fittest contender's stamina. These equations begin with a population (set of arrangements) that attempts to accomplish in a situation (characterized by assessment of wellness). The organically inspired calculations include daily met heuristics derived from living marvels and

natural creature behaviour. Under doubtful circumstances, the knowledge calculated with bio-inspired calculations is autonomous, borrowed, self-sorting and flexible in nature. MGWO is as of late generated heuristics roused from the initiative chain of importance and chasing instrument of Grey scoundrels was effectively applied to fix financial dispatch issues, including subset collection, ideal plan of double later systems time management, stream shop booking issue, ideal force stream issue and improvement of key quality in the cryptography calculations.

In addition, various modifications are suggested to enhance the presentation of simple MGWOs that integrate double GWO, a mixture of MGWO and PSO, a mixture of DE and GWO, and parallel GWO. That advance estimate outlined above will tackle the investigation and abuse of a space for

inquiry. An enhancement calculation needs to build up a decent proportion between investigation and misuse in order to be successful.

Based on obtaining empirical outcomes, it was shown that current variation gives outflank preferential existence of arrangements over other late meta-heuristics. For each generator LFC and AVR equipment are integrated in an interconnected

force system. The voltage and recurrence regulation circle schematic diagram is discussed in figure.1. The controllers are designed for a specific working environment and manage as few load request changes as possible in order to prevent recurrence and voltage..

II. OVERVIEW OF II. LOAD FREQUENCY CONTROL (LFC)

LFC's goal is to maintain genuine balance of force in the system by controlling the system's recurrence. For some point the real need for force varies, a change in recurrence occurs. This recurrence blunder is amplified, combined and converted into an order signal sent to the representative of the turbine. The representative works by adjusting the turbine yield to restore the equilibrium between the data and yield. This technique is also known to as the Power-Repetition.

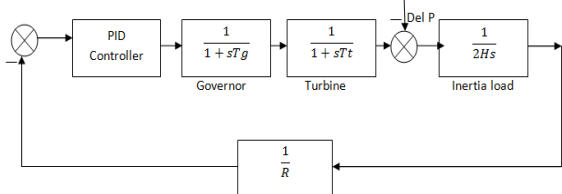


Fig1: Block diagram of LFC with PID controller

II. OVERVIEW OF AUTOMATIC VOLTAGE REGULATOR (AVR)

This test has the function of holding the voltage of frames within limits by changing the excitation of the device. The voltage controller designed detects the difference between a voltage transmitted from the stator voltage and a reference voltage. The signal for error is increased, and care is taken of the excitation circuit. The disparity in excitation holds the VAR's equilibrium up in the system.

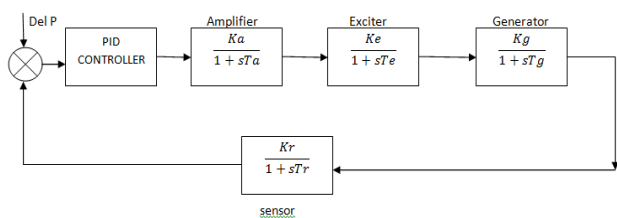


Fig 2: Schematic diagram of AVR with controller

III.GWO ALGORITHM

GWO is a popular swarm-insight calculation that is enlivened by the pecking order initiative and the Grey poser chasing tool. Grey wolves are known as hunters of zenith; they have a standard group of 5–12. In GWO's progressive scheme, alpha (α) is regarded among the gathering as the most governing component. The remaining α

subordinates are beta (β) and delta (π), which help monitor most fraud considered to be omega. The wolfs are in the lowest position in the chain of command. The theoretical model of the chasing process Grey wolf includes the following:

- i) To track, follow and push towards a target.
- (ii) Find, enclose and pester the prey until it ceases to move.
- (iii) The prey being targeted.

IV.MODIFIED GWO ALGORITHM

Finding the least in the world is a standard research activity of all strategies for minimization. For the most part, the alluring method of integrating towards the world's least in populace-based development approaches can be divided into two critical levels. As such, as opposed to grouping around neighbourhood minimum, they should attempt to investigate the entire hunt room. In the final stages, people need to exploit collected data to unite at the least in the world. In GWO, we can change these two stages with a fine-modifying of the parameters a and A, so that we can discover at least with fast union speed worldwide. While numerous improvements to individual-based calculations are advancing near-optima evasion, the writing shows that population-based calculations are better at addressing this problem. Despite the differences between population-based estimates, the standard approach is to break the streamlining process into two contrasting achievements: work versus misuse. The inquiry abruptly and stochastically demands competitor responses for improvement.

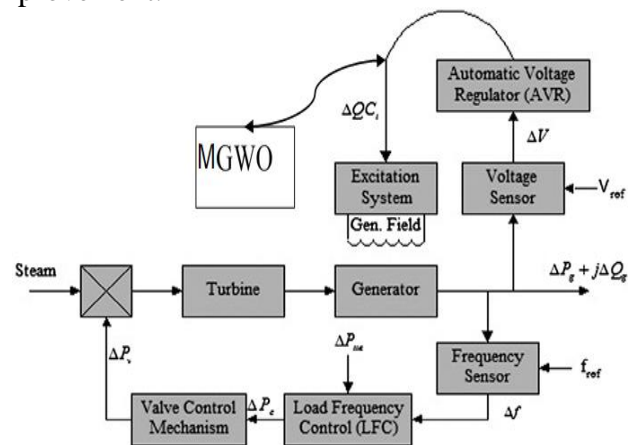


Fig 3 : Block diagram of MGWO based power plant

This program increases the decent assortment of arrangements and allows the hunt room to be investigated strongly. By comparison, the violence seeks to improve the essence of arrangements by looking locally at the positive arrangements in the

investigation that have been obtained. At the moment plans are required to alter less quickly and look locally. Investigation and abuse are two successes that compete when one result succeeds in debasing the other. Right harmony between these two accomplishments will provide a highly accurate estimate of the ideal worldwide using population-based calculations. From one point of view, deserve an accurate estimate of the worldwide ideal. Then again, insignificant investigation of the inquiry space forestalls a from exploitation calculation which results in nearby optima stagnation and again low nature of the approximate ideal.

In MGWO the improvement between investigation and misuse is made by a and A 's flexible estimates. The focus is on investigation (< 1) right now and the other half is used for abuse (< 1). For the most part, higher search space investigation results in lower probability of nearby optima stagnation. There are specific prospects for raising the pace of investigation where exponential capacities are used rather than straightforward capacities to decrease the estimate of a process. An excessive amount of inquiry is like an enormous amount of arbitrariness, and most certainly does not produce positive results for progress. Anyhow, an excessive amount of misuse with too little irregularity is found. In this way the investigation and violence will be in harmony.

In GWO, an approximation of $2 - 0$ decreases explicitly using the update condition as follows,

$$a = 2 (1 - t/T1) \quad (1)$$

Here $T1$ represents the most intense no of stress and t is the present target our MGWO uses exponential power for a period duration rot. consider

$$a = 2 (1 - t 2/T2) \quad (2)$$

The amounts of cycles used for investigation and misuse are 70 percent and 30 percent individually using this exponential rot function. In Algorithm the pseudo code for MGWO is given

1.

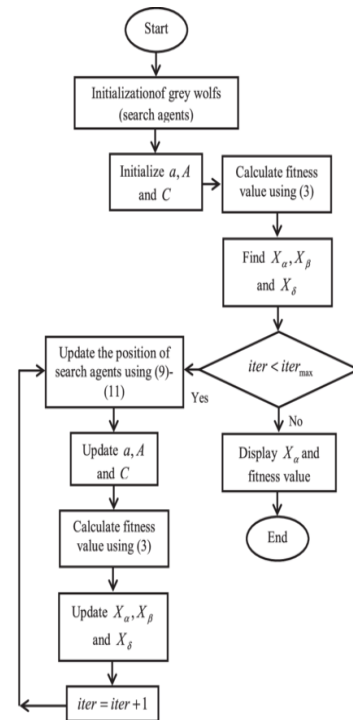


Fig 4 : Flow chart –MGWO Algorithm

V. RESULT AND DISCUSSION

The feasibility of suggested strategies (MGWO strategy and PID controller) is investigated with executing nonlinear force- in an all- multi- assorted source of vitality. Optional low-appraised units like hydroelectric, wind, diesel and gas power station are individually installed in area1, area2, area3 and area4 alongside the hot- system. To consider non-linearity, all warm structures are linked to some physical limitations like the GDB and the GRC. GDB in a warm setting is nonlinear because of backfire. The non linearity of the kickback poses a sinusoidal sway with a timeframe of 2 s. GDB of 0.05 per cent and 0.02 per cent are considered separately for this investigation for both warm framework and hydro-. For this investigation a GRC is chosen for a warm setting of 3 percent per moment. A GRC of 270 per cent per min. is selected for expanding age in hydro frameworks and 360 per cent per min. is chosen for decreasing age

Table – I Optimal gain parameters

Controller	PID controller		
Parameter	K_P	K_I	K_D
AREA 1			
Parameter	K_{P1}	K_{I1}	K_{D1}
	0.5452	0.6451	1.8354
AREA 2			
Parameter	K_{P2}	K_{I2}	K_{D2}
	1.1480	0.5124	0.1258
AREA 3			
Parameter	K_{P3}	K_{I3}	K_{D3}
	0.1125	0.1015	0.0121
AREA 4			
Parameter	K_{P4}	K_{I4}	K_{D4}
	0.1125	0.1015	0.0121

The MGWO method was simulated , evaluated by changing the various input, such as size, weight. Table II lists the optimum input values which are Attained better

Table – II MGWO parameters

MGWO input	LFC	AVR
Size	6	60
No of generations	12	60
weight (w)	0.7	0.8
cognitive co-efficient (CC)	2.06	2.2
social co-efficient (SC)	2.06	2.2
Maximum iteration	500	

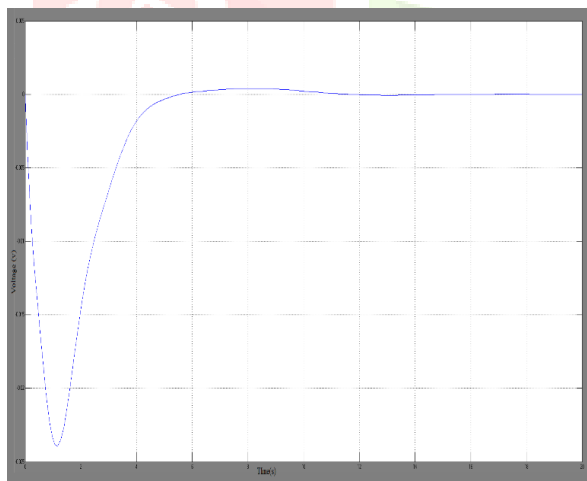


Fig 5: MGWO based PID with AVR for R=15 and $\Delta P_L = 0.2$ p.u

AVR's settling time with MGWO-based PID controller is observed to be 6 sec, There is no temporary peak overtaking presence. The result shows that, in a very perfect step, the MGWO controller can set the terminal voltage response in the AVR system.

Table -III Performance of MGWO based controller for AVR

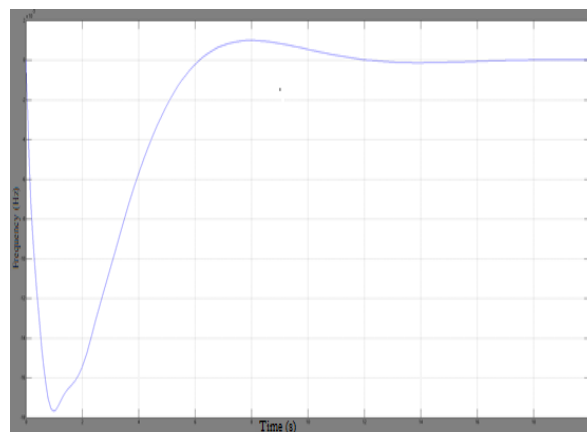


Fig 6: MGWO based PID with LFC for R=15 and $\Delta P = 0.2$ p.u

Likewise various loads and regulations simulated the LFC process. Figure 6 shows the frequency of change due to 0.2 p.u load and the value of setting R is 15

Table -IV Performance of MGWO based controller for LFC

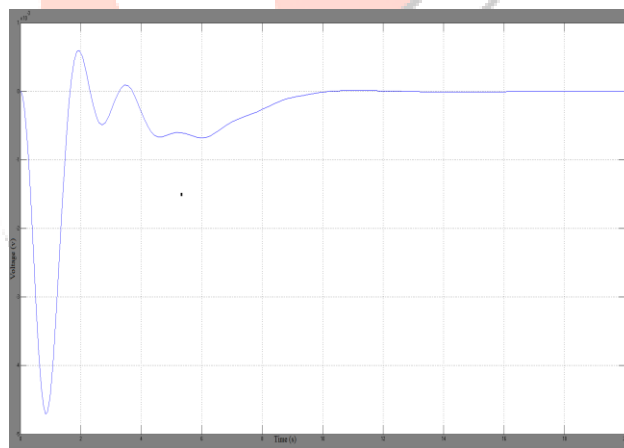


Fig 7: Tie line between two inter connected system

Expanding the heap to higher quality would result in tremendous over-shooting and settling time. The results showing the best arrangement is illustrated in Table III&IV with a heap adjustment of 0.2 and 0.4 for a guideline estimate of 15 and 30. Hence the solutions demonstrate the efficacy of MGWO calculation for ongoing applications and its Suitability under fluctuating situation of burden.

Parameters	R1=15		R2=30	
	$\Delta P=0.2$	$\Delta P=0.4$	$\Delta P=0.2$	$\Delta P=0.4$
Settling Time	6	9.2	5.2	7.3
Overshoot	0.1	0.3	0.15	0.27
Oscillation	0 - 0.1	0 - 0.22	0 - 0.1	0 - 0.20

VI. CONCLUSION

Parameters	R1=15		R2=30	
	$\Delta P=0.2$	$\Delta P=0.4$	$\Delta P=0.2$	$\Delta P=0.4$
Settling Time	8.34	8.42	10.42	10.5
Overshoot	-0.006	-0.022	-0.009	-0.008
Oscillation (Hz)	0 - 0.006	0 - 0.0213	0 - 0.0147	0 - 0.00

The MGWO had the option of giving profoundly serious results contrasted with notable heuristics, such as PSO, Glow-worm Swarm Optimization (GSO), Differential Evolutionary (DE), and Evolution Strategies (ES). We will create double and multi-target calculation adaptations of the MGWO for future research. The standard controls used for this issue have big settling time, over-shooting, and motions. Thus, as transformative equations are applied to control structure problems, a faster and smoother reaction is illustrated by their run of the mill attributes. In a secluded force setting, a shrewd protocol for combined voltage and recurrence regulation was suggested. The proposed MGWO-PID controller offers a good solidity between regular overflow and transient motions with zero consistent state blunder

VII. REFERENCES

- [1] E. Emary, H. M. Zawbaa, and A. E. Hassanien, "Binary grey wolf optimization approaches for feature selection," *Neurocomputing*, vol. 172, pp. 371–381, 2016.
- [2] S. Mirjalili, S. M. Mirjalili, and A. Hatamlou, "Multi-verse optimizer: a nature-inspired algorithm for global optimization," *Neural Computing & Applications*, vol. 27, no. 2, pp. 495–513, 2016.
- [3] X.-B. Meng, X. Z. Gao, Y. Liu, and H. Zhang, "A novel bat algorithm with habitat selection and Doppler effect in echoes for optimization," *Expert Systems with Applications*, vol. 42, no. 17-18, pp. 6350–6364, 2015.
- [4] S. Gholizadeh, "Optimal design of double layer grids considering nonlinear behaviour by sequential grey wolf algorithm," *Journal of Optimization in Civil Engineering*, vol. 5, no. 4, pp. 511–523, 2015.
- [5] A. A. El-Fergany and H. M. Hasanien, "Single and multi-objective optimal power flow using grey wolf optimizer and differential evolution algorithms," *Electric Power Components and Systems*, vol. 43, no. 13, pp. 1548–1559, 2015.
- [6] A. Zhu, C. Xu, Z. Li, J. Wu, and Z. Liu, "Hybridizing grey Wolf optimization with differential evolution for global optimization and test scheduling for 3D stacked SoC," *Journal of Systems Engineering and Electronics*, vol. 26, no. 2, pp. 317–328, 2015.
- [7] T.-S. Pan, T.-K. Dao, T.-T. Nguyen, and S.-C. Chu, "A communication strategy for paralleling grey wolf optimizer," *Advances in Intelligent Systems and Computing*, vol. 388, pp. 253–262, 2015.
- [8] J. Jayapriya and M. Arock, "A parallel GWO technique for aligning multiple molecular sequences," in *Proceedings of the International Conference on Advances in Computing, Communications and Informatics (ICACCI '15)*, pp. 210–215, IEEE, Kochi, India, August 2015.
- [9] M. M. Afsar and M.-H. Tayarani-N, "Clustering in sensor networks: a literature survey," *Journal of Network and Computer Applications*, vol. 46, pp. 198–226, 2014.
- [10] J. C. Bansal, H. Sharma, S. S. Jadon, and M. Clerc, "Spider Monkey Optimization algorithm for numerical optimization," *Memetic Computing*, vol. 6, no. 1, pp. 31–47, 2014.
- [11] B. A. Attea and E. A. Khalil, "A new evolutionary based routing protocol for clustered heterogeneous wireless sensor networks," *Applied Soft Computing*, vol. 12, no. 7, pp. 1950–1957, 2012.
- [12] A. H. Gandomi and A. H. Alavi, "Krill herd: a new bio-inspired optimization algorithm," *Communications in Nonlinear Science and Numerical Simulation*, vol. 17, no. 12, pp. 4831–4845, 2012.
- [13] W.-T. Pan, "A new fruit fly optimization algorithm: taking the financial distress model as an example," *Knowledge-Based Systems*, vol. 26, pp. 69–74, 2012.
- [14] R. Rajabioun, "Cuckoo optimization algorithm," *Applied Soft Computing Journal*, vol. 11, no. 8, pp. 5508–5518, 2011.
- [15] X.-S. Yang and S. Deb, "Engineering optimisation by cuckoo search," *International Journal of Mathematical Modelling and Numerical Optimisation*, vol. 1, no. 4, pp. 330–343, 2010.
- [16] X.-S. Yang, "Firefly algorithm, stochastic test functions and design optimization," *International Journal of Bio-Inspired Computation*, vol. 2, no. 2, pp. 78–84, 2010.
- [17] A. Y. S. Lam and V. O. K. Li, "Chemical-reaction-inspired meta-heuristic for optimization," *IEEE Transactions on Evolutionary Computation*, vol. 14, no. 3, pp. 381–399, 2010.
- [18] S. Das, A. Biswas, S. Dasgupta, and A. Abraham, "Bacterial foraging optimization algorithm: theoretical foundations, analysis, and applications," *Studies in Computational Intelligence*, vol. 203, pp. 23–55, 2009.
- [19] K. Krishnanand and D. Ghose, "Glowworm swarm optimization: a new method for optimising multi-modal functions," *International Journal of Computational Intelligence Studies*, vol. 1, no. 1, pp. 93–119, 2009.
- [20] D. Karaboga and B. Akay, "A comparative study of artificial Bee colony algorithm," *Applied Mathematics and Computation*, vol. 214, no. 1, pp. 108–132, 2009.
- [21] E. Rashedi, H. Nezamabadi-Pour, and S. Saryazdi, "GSA: a gravitational search algorithm," *Information Sciences*, vol. 179, no. 13, pp. 2232–2248, 2009.