



A REVIEW LITERATURE ON POLYHERBAL SOAP

Mr. Pravin R. Paithane¹, Miss .Pooja B. shivsharan²,

Mr. Kunal Hake³, Mr. Vijaykumar M. Kale⁴

¹⁻² Students, ³⁻⁴ Assistant Professor

Mahadev Kanchan College of Pharmaceutical Education and Research Uruli Kanchan, Tal-Haveli Dist-Pune, 412202. Maharashtra India.

Abstract:

The need to achieve and maintain healthy skin is on the rise. This causes the composition of oxidant detergents with complex synthetic chemicals whose safety on skin and mortal health is still unclear. The present work involved the expression and evaluation of poly herbal detergents. The herbal detergents were formulated using aloe vera, curcuma longa and eclipta alba estimated for colorful parcels like colour, odour, pH, Froth retention, frothheight. Some herbal factory excerpt have antibacterial exertion. The end and ideal of the present study is to formulate antibacterial poly herbal cleaner using eclipta alba excerpt and curcuma longa. The set polyherbal phrasings displayed a good antibacterial effect. The set phrasings were estimated for colorful physicochemical parameters for which good characteristics were observed.

KEYWORDS:

Antioxidants, moisturizer, herbal cleaner.

Introduction

1.1 Skin:

skin is the most exposed part of the body to the sunlight, environmental pollution and also used to some protection against the pathogen. The human skin is the outer covering of the body and is the largest organ of the integumentary system. The skin has up to seven layers of ectodermal tissue guarding muscles, bones, ligaments, and internal organs. Human skin is similar to most of the other mammals skin and it is very similar to pig skin. Thought nearly all human skin is covered with hair follicles. Skin play an important immunity role in protecting the body against pathogens and excessive water loss.

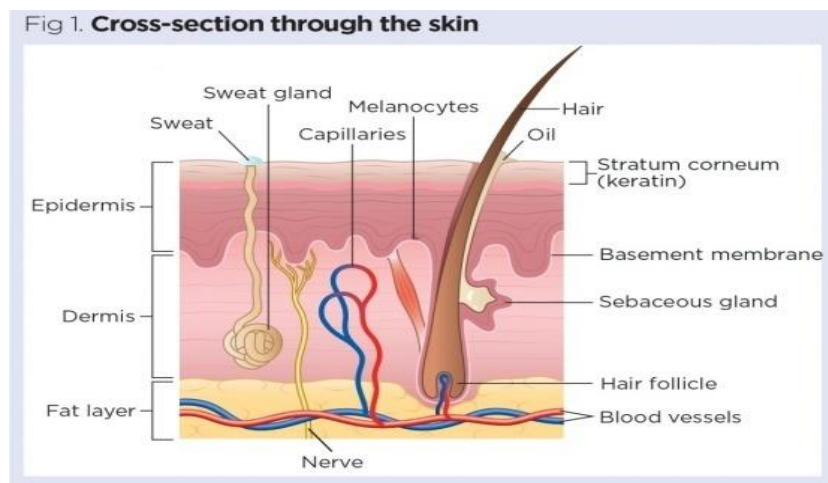


Fig: Skin

1.2 Cosmetics for the skin:

The skin cosmetics are formulated in the form of solid, liquid and semi solid. the solids correspond of maquillages with different degrees of inflow and angle of repose or of compacts. The semi solids may be conflation or liquids are both monophasic and biphasic. The solid products correspond of face maquillages, baby maquillages, compacts and moulded products like powders.



Fig: face wash



Fig:cleanser

1.3 Soap

Cleaner is a swab of adipose acid used in a variety of sanctification and slicking products. detergents are surfactant generally used for washing and bathing and other types of housekeeping. detergents are used to remove dirt including dust micro organisms, strains bad smells from the body. marketable cleaner generally are made up of poisonous mercury aluminium, barium, bis – phenol, plastics and other chemicals, which are absorbed into the body via internal organs from vaporization of the chemicals as well as skin immersion with negative side goods. Cleaner is a admixture of sodium mariners of colorful naturally being adipose acids. Some of the natural cleaner manufactures also use aromatherapy and herbal treatments to offer the stylish skin treatment result for your skin.



Fig: Soap

1.5 Herbal Soap:

Herbal cleaner medication is a drug it contains anti-bacterial, anti-septic, anti-ageing, anti-oxidant parcels which substantially uses part of a factory to treatment for an injury or complaint or to achieve health. Herbal cleaner don't contain the artificial colours, flavours, fluorides etc. when compared to the content of marketable cleaner. Soaps are the natural product substantially set up in the treatment of nearly all complaint and skin problems owing to their high medicinal value, cost effectiveness, vacuity and comity. The aloe vera has been known and used for centuries for its health, beauty, medicinal and skin care parcels. currently most constantly aloe vera used in the field of cosmetology. Aloe vera contains 75 potentially active ingredients. Curcuma longa having parcels like print protection, anti-ageing, anti-septic, anti-inflammatory exertion. Recent studies demonstrate that the curcumin is excellent for wrinkles and can control the inflammation and the conformation of free radicals. Almond oil painting has been used for hundreds of times to treat dry skin conditions, including eczema, and psoriasis. The oil painting may reduce the appearance of acne, enhance cell development and repair sun damage.



Fig: Herbal Soap

1.6 Most common skin disease:

1. psoriasis: The condition in which skin cells build up from scales and itchy, dry patches

Symptoms: dryness, fissures, flakiness, peeling, small bump, thickness or redness

Treatment: Herbal medication, kutaki ras manikya, arogya vardhini vati

Psoriex-5, Imupsora Tablet



Fig: Psoriasis



Fig:Imupsora Tablet



Fig:Psorixa-5 Tablet

2.Eczema: Environmental Factors or Allergens such as cold & dry weather, Dampness, dustmites
Triggers Factor- Skin irritation inhaled allergens, climate, hormones mold

Symtoms- 1.rash on swollen skin

2.pruritus(itchiness)

Treatment- 1.Eczema cream

2. dupixent 300mg/2ml

3. EUCRISA

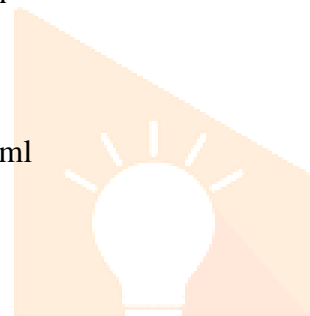


Fig: Eczema



Fig:Dupixent



Fig:Eczema cream

3. Rashes:



Fig-Rashes



Fig-rashgard

Advantages of herbal cleaner:

- It helps in reducing acne and dry skin.
- It reduces skin tanning, blankness, and itching.
- It also detoxifies the skin and removes dirt from the skin.
- This cleaner has important antioxidants which keeps the skin doused

Disadvantages of herbal cleaner:

- utmost of the herbal medicines aren't fluently available.
- No pharmacopoeia defines any specific procedure or constituents to be in any of herbal cosmetics.
- Manufacturing process are complicated.
- Herbal medicines have slower effect than allopathic lozenge form.

Materials:**2.1 Eclipta Alba:**

Botanical name: Eclipta prostrate

Part typically used: Leaves and roots

Plant colour: Green

Description: Eclipta plant can grow either prostrate (flat) or erect up to 36 inches tall. Seeding leaves are ovate to egg shaped with short, toothed margin. Stems are reddish purple with short , flat, up turned hairs.



Fig: Eclipta Alba

2.2 Almond:

Synonym- Almendro, almendra, amendoa, mandel, mandorlo

Biological source-Almond oil is a fixed oil obtained by expression from the seeds of *prunus amygdalus* var. *dulcis*.

Family- Rosaceae

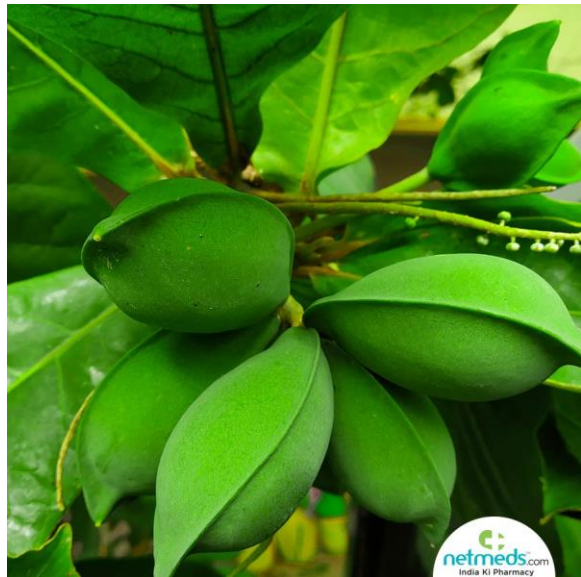


Fig: Almond

2.3 Turmeric:

Synonym – Indian saffron, haldi, rhizome *curcumae*.

Biological source- *Curcuma longa* linn.

Chemical constituents- Curcumin, desmethoxycurcumin, bidesmethoxy curcumin volatile oil, sugar bitter substances oils and acids.



Fig: Turmeric

2.4 Vitamin E Capsule:

FOOD SOURCES

Vitamin E is found in plant based oils, nuts, seeds, fruits, and vegetables.

- Wheat germ oil
- Sunflower seeds

BENEFITS OF VITAMIN E

- Remove dirt
- Improve dry skin
- Prevent sunburn
- Reduce hyperpigmentation
- Prevents skin aging



Fig: Vitamin E capsule

2.5 Rose Water:

Family – rosaceae

Chemical constituents – phenyl ethanol, linalool, citronellol, nerol, geraniol, and along with rose oxides.

Biological source – rose water is obtained from sepals and petals of rosadamascema through



Fig: Rose Water

2.6 Aloe Vera:

Aloe vera is a good active constituents to reach in sunscreen magazine. It has been proven to both treat and prevents becks

on your skin. The leaves of aloe vera and *A. barbadensis* are the source of aloe vera gel. aloe vera gel is used in cosmetics embrocation for its moisturizing. it blocks UVA and UVB shafts and maintain skin natural humidity balance. It stops the sunburn and stimulate vulnerable system intervention. Aloe vera gel can be used to help with in the mending process of sunburn it help relieve pain and greenishness by reducing inflammation. The gel also stimulate the product of collagen which help the mending process.



Fig:Aloe Vera

2.7 COCONUT OIL:

Coconut oil painting keeps the skin soft and smooth while precluding unseasonable ageing of the skin. Coconut oil painting for skin use as a moisturizer, remove dead skin cells. Coconut oil painting moisturizing dry skin including in people with condition similar as eczema. Promoting crack mending it have antibacterial, antifungal, and antiviral, parcels which prevents free revolutionaries from causing damage to the skin.



Fig: Coconut oil

Conclusion:

The Prepared formulation when tested for different test gave good results. It does not give any irritancy to skin it was determined by using this soap by few volunteer hence it is proved that Soap does not give any irritancy to skin. Further more the prepared soap were standardized by evaluating various physicochemical properties such as PH appearance odour in which the exhibit satisfactory effect.

References:

1. Browning, M., 2002. Melt & Pour Soapmaking. Sterling Publishing Company, Inc.
2. Jacob, B. and Ciyamol, V., Formulation and Evaluation of Herbal Soap
3. Pierce, A., 2013. Soap Making Recipes: Soap Making For Beginners. Speedy Publishing LLC
4. Chattopadhyay, P.K., 2003. Modern Technology of Soaps, Detergents and Toiletries: With Formulae and Project Profiles. National Institute of Inustril re..
5. Anant, M.G., FORMULATION AND EVALUATION OF HERBAL SOAP BY USING NATURAL INGREDIENTS BY SIMPLE MATCHED.
6. Fujioka, N., Hibino, S., Wakahara, A., Kawagishi, T., Taku, K., Mizuno, S., Watanabe, S., Takahashi, H., Hamada, U., Takahashi, Y. and Yonei, Y., 2009. Effects of various soap elements on skin. *Anti-Aging Medicine*, 6(12), pp.109-118.
7. Ruckmani, K., Krishnamoorthy, R., Samuel, S. and Kumari, H.L.J., 2014. Formulation of herbal bath soap from vitex negundo leaf extract. *Journal of Chemical and Pharmaceutical Sciences* ISSN, 974, p.2115.
8. Adigun, O., Manful, C., Prieto Vidal, N., Mumtaz, A., Pham, T.H., Stewart, P., Nadeem, M., Keough, D. and Thomas, R., 2019. Use of natural antioxidants from newfoundland wild berries to improve the shelf life of natural herbal soaps. *Antioxidants*, 8(11), p.536.
9. Gana Manjusha, K., Balakrishnaiah, P., Syamala, R., Mounik, N. and Ravi Chandra, T., 2019. Formulation And Evaluation Of Herbal Bath Soap Containing Methanolic Extracts Of Three Ayurvedic Varnya Herbs. *Asian Journal OfPharmaceuticels and clinical research. Innovare Academic Sciences*, 12(11)
10. Sindhu, R.K., Chitkara, M., Kaur, G., Kaur, A., Arora, S. and Sandhu, I.S., 2019. Formulation development and antimicrobial evaluation of polyherbal soap. *Plant Arch*, 19(2), pp.1342-6
11. Matangi, S.P., Mamidi, S.A., Raghavamma, S.T.V. and Nadendla, R.R., 2014. Formulation and evaluation of anti aging poly herbal cream. *skin*, 5(6)
12. Jadhav, V.M., Thorat, R.M., Kadam, V.J. and Salaskar, K.P., 2009. Chemical composition, pharmacological activities of Eclipta alba. *Journal of Pharmacy Research*, 2(8), pp.1129-1231
13. Mithun, N.M., Shashidhara, S. and Vivek Kumar, R., 2011. Eclipta alba (L.) A review on its phytochemical and pharmacological profile. *Pharmacologyonline*, 1(1), pp.345- 357.
14. Chokotia, L.S., Vashistha, P., Sironiya, R. and Matoli, H., 2013. Pharmacological activities of Eclipta alba (L.). *International Journal of Research and Development in Pharmacy and Life Sciences*, 2(4), pp.499-502.
15. Rattan, S.I., 2005. Anti-ageing strategies: prevention or therapy? Slowing ageing from within. *EMBO reports*, 6(S1), pp.S25-S29.

16. Tungmunnithum, D., Abid, M., Elamrani, A., Drouet, S., Addi, M. and Hano, C., 2020. Almond Skin Extracts and Chlorogenic Acid Delay Chronological Aging and Enhanced Oxidative Stress Response in Yeast. *Life*, 10(6), p.80.
17. Rusu, M.E., Gheldiu, A.M., Mocan, A., Vlase, L. and Popa, D.S., 2018. Anti-aging potential of tree nuts with a focus on the phytochemical composition, molecular mechanisms and thermal stability of major bioactive compounds. *Food & function*, 9(5), pp.2554-2575.
18. Lee, S.L., Song, B.R., Shin, H.S., Lee, Y.J. and Park, S.N., 2018. Antioxidant, antiaging and antimicrobial effects of ethanolic extract and ethyl acetate fraction from *Eclipta prostrata*. *Journal of the Society of Cosmetic Scientists of Korea*, 44(3), pp.349- 362.
19. Baskaran, P. and Jayabalan, N., 2005. An efficient micropropagation system for *Eclipta alba*—A valuable medicinal herb. *In Vitro Cellular & Developmental BiologyPlant*, 41(4), pp.532-539

