



CRITICAL PROCESS PARAMETERS FOR SELECTION OF COLUMN AND SOLVENT FOR RP-HPLC

Sonwane Pritam Raosaheb*¹, Rokade Anita Suresh¹, Dalavi K. A¹, Hingne Lahu D¹, Shubhangi B. Jogdand¹, Nikhil A. Shete²

¹ Aditya Pharmacy College, Beed Maharashtra.

² Oriental University Indore, Madhya Pradesh, India.

Abstract: In HPLC the choice of mobile phase and column play very critical function, selection of suitable solvent and column is assist to enhance the performance of the system. In HPLC the mobile section is natural or combined solvents in addition to solvents with solid modifiers. Chromatographers have a choice among loads of solvents for distinctive application of HPLC. A selected selection is typically suffering from solvent traits inclusive of viscosity, refractive index, noncorrosiveness, toxicity, miscibility, transparency etc. commercial availability in adequate purity at reasonable price is also important issue. The solvent power or % natural solvent in cellular phase controls the retention time of the analyte. A beneficial rule of thumb in RPLC indicates that 10% lower within the natural solvent in the cell phase indicates a three-fold boom in k. The column length (Diameter, height) pore length, column cloth plays very vital function inside the approach improvement and validation. This article focus on the unique parameters that have an effect on the selection of solvent device and column for the HPLC.

Key Words: RP-HPLC, Column, Solvent, Method development, Validation Etc.

Introduction:

Considering the fact that the start of excessive-performance liquid chromatography (HPLC) in the 1960, the technique has been step by step advanced and refined. This applies similarly to the substances used. There at the moment are 10000 extraordinary HPLC columns from many different producers solely in our HPLC Column configurator you could locate more than 60.000 one of a kind columns. This option evidently offers

terrific blessings - among other things there are very particular separation columns for almost each separation trouble - on the equal time, the consumer is spoiled for desire^{1,2}.

Choice of solvents to be used as a mobile section in HPLC analysis is a key thing of method development. It isn't possible to have a customary solvent so as to meet all programs and more than often a combination of solvents is determined primarily based on the analysis requirements. Selection of appropriate solvents is based on their physical residences and compatibilities with the sample and column desk bound segment.^{3,4,5}

Choice of column:

Classifying the sample: step one in method improvement is to symbolize the sample as every day or round. Everyday samples are an aggregate of small molecules (<2000 Daltons) that can be separated the use of more or less standardized beginning situations. Separations in regular samples reply in predictable style to trade in solvent power (%B) and sort (Acetonitrile, methanol) or temperature. A 10% decrease in %B will increase retention by about threefold, and selectivity typically modifications as both %B and solvent type is numerous.

It is feasible to split many normal samples just via varying solvent energy and type. Therefore, RPC method development for all everyday samples (both neutral and ionic) may be carried out to begin with in the same manner¹⁷.

The column/desk bound phase: selection of the desk bound phase/column is the primary and the most critical step in technique improvement. The improvement of a rugged and reproducible method is not possible without the availability of a strong, excessive overall performance column. To keep away from issues from irreproducible pattern retention in the course of approach development, it's miles crucial that columns be solid and reproducible. A C8 or C18 column made from mainly purified, less acidic silica and designed specially for the separation of simple compounds is normally appropriate for all samples and is strongly encouraged,^{12, 13, 17, 18}. a few vital factors want to be taken into consideration at the same time as deciding on column in RP- HPLC are summarized in desk 2.

The column is chosen depending on the nature of the solute and the facts about the analyte. Reversed phase mode of chromatography facilitates a wide range of columns like dimethyl silane (C2), butylsilane (C4), octylsilane (C8), octadecylsilane (C18), base deactivated silane (C18) BDS phenyl, cyanopropyl (CN), nitro, amino, and so on. Typically longer columns offer higher separation because of better theoretical plate numbers. Because the particle size decreases the floor place available for coating will increase. Columns with 5- μ m particle size supply the fine compromise of performance, reproducibility and reliability.

Factor(s)	Effect on column efficiency
Column length	*Choose longer columns for enhanced resolution *Choose shorter column for shorter analysis time, lower back pressure and fast equilibration and less solvent consumption
Column internal diameter	*Choose wider diameter column for greater sample loading *Choose narrow column for more sensitive and reduced mobile phase consumption
Particle shape	*Choose spherical particles for lower back pressure, column stability and greater stability *Choose irregular particles when high surface area and high capacity is required
Particle size	*Choose smaller particle (3-4 μm) for complex mixture with similar components *Choose larger particle (5-10 μm) for sample with structurally different compounds *Choose very large particle (15-20 μm) for preparative separation
Pore size	*Choose a pore size of 150 \AA or less for sample with molecular weight less than 2000 *Choose a pore size of 300 \AA or less for sample with molecular weight greater than 2000
Surface area	*Choose end capped packing to eliminate unpredictable secondary interaction with the base materials *Choose non-end capped phase for selectivity differences for polar compounds by controlling secondary interaction
Carbon load	*Choose high carbon loads for greater column capacities and resolution *Choose low carbon loads for fast analysis

TABLE: FACTORS AFFECTING COLUMN EFFICIENCY.

The subsequent textual content gives steerage and enables in the choice of the right HPLC column.

Hardware of the column:

Maximum HPLC columns consist of 316 steel. The advantage is that the metallic is pressure-resistant and additionally tremendously inert to corrosion. For an awesome separation overall performance it's miles important that the inner of a column has no roughness, scoring or microporous systems.⁵⁻⁷

Base fabric:**Silica gel:**

A famous base material in HPLC systems is silica gel; it includes Si atoms bridged by way of oxygen atoms. A disadvantage of silica gel is that a high pH leads to the dissolution of the silica skeleton. Silica gel columns may be used within the pH range from pH 1 to 8. A low metallic content makes it viable to boom the chemical balance of exceedingly pure silica gels. On the floor, silica gel contains OH companies (silanol companies). Those silanol agencies may be chemically modified in order that stationary phases with specific properties are obtained. Further to its mechanical balance, silica gel has the benefit of a low-fee and simple synthesis. Likewise, the surface modification is easy, and flexible. The pore length can be produced with a slim distribution of silica gel.^{8,9}

Polymer columns:

HPLC columns based on polymer are also available for RP-HPLC (reversed segment HPLC). Generally polystyrene-divinylbenzene columns are used, which give a better pH balance (pH 1-13) towards the silica gel columns. For strongly acidic or simple eluents they constitute an exciting opportunity. Specially for gel permeation chromatography, styrene-divinylbenzene is an critical desk bound segment.¹⁰⁻¹²

Shape of the column:**Fully porous particles:**

Further to the traditional complete-porosity stages, there at the moment are additionally coreshell phases, monolithic phases and phases for UHPLC with small particle sizes.

Most of the debris used in HPLC are the full-porosity debris. Conventional grain sizes are 3, 5 or sometimes additionally 10 μm . When the debris are full-bodied, the entire internal shape is porous and may be compared, as an instance, with a sponge.¹³

Coreshell particles:

Coreshell particles have a strong centre and best the outer shell is porous. This solid middle results in multiplied separation performance. The particles have a more uniform particle size distribution and might consequently be packaged higher, the A-time period of the Van-Deemter equation (parent 1, p. five) is decreased. Further, the mass transfer of the molecules into the pores (C-time period of the Van-Deemter equation) is improved. A drawback of the coreshell debris is the lower loadability against absolutely porous materials.^{14, 15}

Monolithic section:

Monolithic columns consist of a single piece of porous cloth, for instance silica gel or organic polymer. As a result, the chromatographic mattress does no longer include man or woman debris however of a porous rod. Monoliths have a separation capability that is similar to 3 μm packed particle columns. A downside is that,

for monolithic phases, the availability of selectivities continues to be restrained in comparison to absolutely porous substances.¹⁶

Bound section:

The form of available desk bound stages (reversed section, normal phase, phenyl phases) of numerous manufacturers contributes to the fact that it isn't always smooth to speedy find the proper HPLC column. A common reversed phase C18 column may be used for lots analyzes. So one can determine which desk bound phase is appropriate, the molecule to be investigated must be taken into consideration in the first step. If one desires to analyze a completely polar molecule, there may be a possibility that it does no longer interact with the C18 cloth and as a result elutes in the useless time. In this case, as an example, C4, CN, diol or phenyl stages are suitable. If on the other hand the analyte is just too unpolar it may irreversibly adhere to the material and thus not elute from the column. To avoid this you may try a silica, CN or NH₂ segment. This commonly occurs whilst the analyte is soluble only in heptane or hexane.¹⁵⁻¹⁸

As soon as the decision is made for the section, the first hurdle is taken. However, it will become even more complicated due to the fact that one has to determine between distinctive dimensions and specifications for the column to be used, along with particle size, pore length, internal diameter and carbon content.¹⁹

Particle Size:

Smaller particle sizes yield better resolution than larger particles. Larger particles then again produce a decrease back strain inside the HPLC system. A uniform particle length distribution is specifically vital in addition to the scale of the particle. An expanded share of small debris increases the backpressure; if too many large particles are contained, the cloth separation performance because of a lower floor be counted. If a huge particle size distribution is used, the cloth can also be poorer. The scale of the particle has a power at the satisfactory of the resolution for the reason that length of the debris influences the A and C terms of the Van Deemter equation.²⁰⁻²³

Most desirable separation performance is carried out with as small a ground as viable, thereby growing the total quantity of isolating flooring within the column. Especially when the A and C time period may be minimized, it's far possible to attain a very good separation overall performance over a massive go with the flow range.²⁴

Pore length:

The pore length to be used depends on the scale of the molecule to be analysed: the bigger the molecule, the bigger the pores ought to be. Pore sizes are commonly given in angstroms, corresponding to $10 \text{ \AA} = 1 \text{ nm}$. For small molecules, a column up to 120 \AA may be used. For big biomolecules, as an example, columns with pore sizes of 3000 \AA are suitable. For biomolecules the choice of the correct pore size is specifically critical as it's far to be had in a wide variety of sizes. The smaller the pore, the greater floor and interaction possibilities the segment has. This lets in them to be loaded better.²⁵

Inner diameter/ length

Depending on the type of analysis and amount of the substance to be analyzed, the dimension of the HPLC column should be selected. The HPLC system also limits the variety of available dimensions.^{26, 27}

SOLVENT SELECTION:

Crucial Parameters in Reversed phase Chromatography:

Mobile phase: in lots of cases, the colloquial time period used for the mobile stages in reversed section chromatography is “buffer”. However, there's little buffering potential inside the mobile section answers considering they normally comprise robust acids at low pH with large concentrations of natural solvents. Adequate buffering capacity need to be maintained while working closer to physiological conditions.^{28, 29}

Organic solvent: The organic solvent (modifier) is delivered to lower the polarity of the aqueous mobile section. The decrease the polarity of the cellular section, the more its eluting energy in reversed segment chromatography. Even though a massive style of organic solvents may be used in reversed section chromatography, in practice only some are robotically hired. The two most widely used natural modifiers are acetonitrile and methanol, although acetonitrile is the greater famous choice. Isopropanol (2-propanol) can be employed due to its robust eluting houses, however is restricted by way of its excessive viscosity which leads to lower column efficiencies and better back pressures.³⁰

Both acetonitrile and methanol are much less viscous than isopropanol. All three solvents are basically UV transparent. This is a crucial assets for reversed phase chromatography considering column elution is generally monitored using UV detectors. Acetonitrile is used almost exclusively when setting apart peptides. Maximum peptides only soak up at low wavelengths within the extremely- violet spectrum (usually less than 225 nm) and acetonitrile provides plenty lower history absorbance than different commonplace solvents at low wavelengths.³¹

Ion suppression: The retention of peptides and proteins in reversed section chromatography can be modified by mobile segment pH on the grounds that these unique solutes comprise ionisable agencies. The degree of ionization will depend on the pH of the mobile section. The stability of silica-based totally reversed phase media dictates that the working pH of the cell phase must be beneath pH 7.5. The amino companies contained in peptides and proteins are charged below pH 7.5. The carboxylic acid organizations, but, are neutralised because the pH is reduced. The cellular phase utilized in reversed section chromatography is typically prepared with sturdy acids such as trifluoroacetic acid (TFA) or ortho-phosphoric acid. Those acids hold a low Ph environment and suppress the ionisation of the acidic companies inside the solute molecules. Various the concentration of strong acid components within the cell segment can trade the ionisation of the solutes and, therefore, their retention behavior.

The important benefit of ion suppression in reversed phase chromatography is the removal of blended mode retention consequences due to ionisable silanol businesses closing at the silica gel floor. The effect of mixed mode retention is increased retention times with giant peak broadening.³²⁻⁴¹

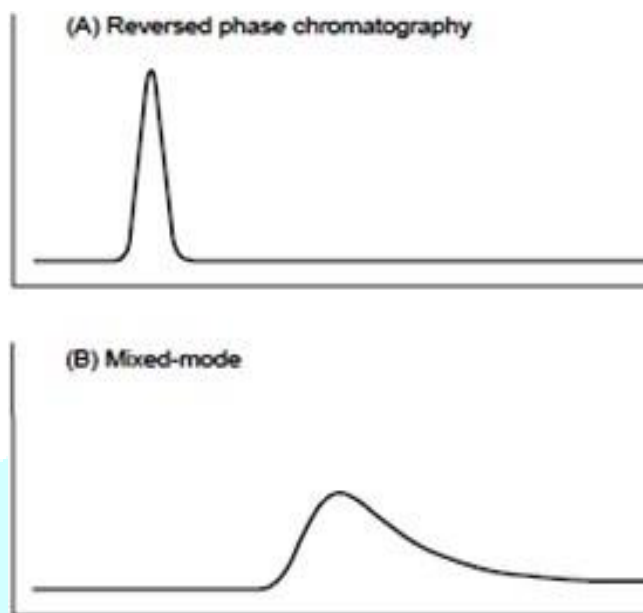


FIGURE: TYPICAL EFFECTS OF MIXED-MODE RETENTION.

(Peaks are broader and skewed, and retention time increases)

pH: pH plays an important function in accomplishing the chromatographic separations because it controls the elution residences via controlling the ionization characteristics. Reversed section separations are most customarily done at low pH values, usually among pH 2-four. The low pH effects in excellent solubility of the sample additives and ion suppression, not handiest of acidic corporations on the pattern molecules, but also of residual silanol businesses at the silica matrix. Acids which includes trifluoroacetic acid, heptafluorobutyric acid and ortho-phosphoric acid inside the awareness variety of zero.05 - zero.1% or 50 - one hundred mM are normally used. Cell stages containing ammonium acetate or phosphate salts are suitable to be used at pH's closer to neutrality. note that phosphate buffers are not volatile it is critical to hold the pH of the cellular segment within the variety of 2.0 to 8.0 as maximum columns does now not resist to the pH which might be outside this variety. that is due to the reality that the siloxane linkage vicinity cleaved underneath pH 2.0; at the same time as at pH valued above eight.0 silica may dissolve⁴²⁻⁴⁹

Absorbance: An UV-seen detector is based on the principle of absorption of UV visible light from the effluent rising out of the column and surpassed thru a photocell located in the radiation beam. UV detector is generally suitable for gradient elution work. Maximum compounds adsorb UV mild inside the variety of two hundred- 350 A°. The cellular phase used ought to now not interfere inside the peak sample of the desired compound therefore it must no longer absorb on the detection wavelength employed⁵⁰⁻⁶⁰.

Selectivity: Selectivity (α) is equivalent to the relative retention of the solute peaks and, not like performance, depends strongly at the chemical residences of the chromatography medium.

The selectivity, α , for two peaks is given by way of; $\alpha = k_2'/k_1' = V_2 - V_0/V_1 - V_0 = V_2/V_1$ in which V_1 and V_2 are the retention volumes, and k_2/k_1 are the capability elements, for peaks 1 and 2 respectively, and V_0 is the void volume of the column. Selectivity is suffering from the floor chemistry of the reversed section medium, the nature and composition of the cellular segment, and the gradient shape.⁶¹⁻⁶⁸

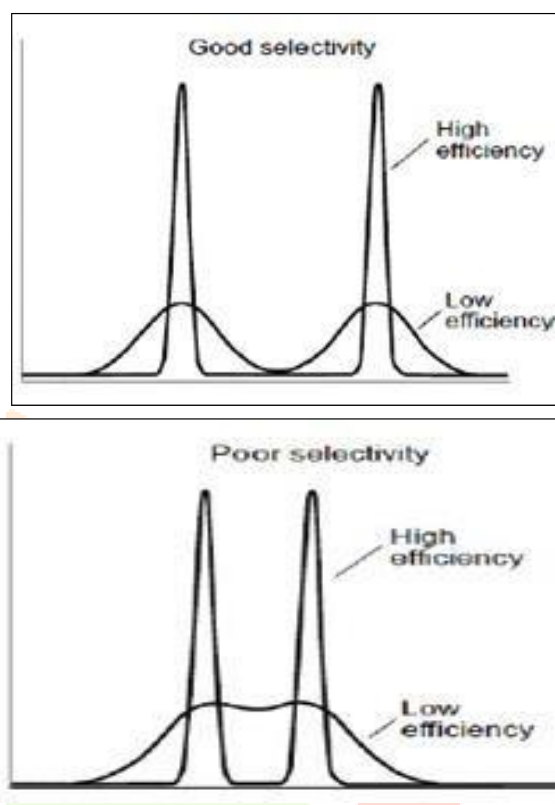


FIGURE: THE EFFECT OF SELECTIVITY AND EFFICIENCY ON RESOLUTION.

- Both high column efficiency and excellent selectivity are vital to universal decision. But, changing the selectivity in a chromatographic test is simpler than converting the efficiency. Selectivity can be changed by way of converting easily changed situations like cellular section composition or gradient shape.

Viscosity: Solvent of lowest possible viscosity must be used to decrease separation time. A delivered benefit of low viscosity is that excessive performance theoretical plate (HETP) values are normally lower than with solvents of better viscosity, because mass switch is faster. Viscosity need to be much less than 0.5 centipoise, in any other case excessive pump pressures are required and mass switch between solvent and stationary phase might be decreased.^{50, 51}

Temperature: Temperature will have a profound effect on reversed section chromatography, in particular for low molecular weight solutes including quick peptides and oligonucleotides. The viscosity of the cellular section utilized in reversed segment chromatography decreases with increasing column temperature. Since mass transport of solute between the mobile section and the stationary section is a ramification-controlled system, lowering solvent viscosity typically results in extra efficient mass transfer and, consequently, higher decision. Growing the temperature of a reversed phase column is specifically effective for low molecular weight solutes considering they're certainly stable on the elevated temperatures⁶⁹⁻⁷⁵.

Conclusion:

It is now clear that when choosing a suitable HPLC column & solvent many different parameters have to be considered. There is usually not the one right column or solvent, but you often have a variety of options that might be appropriate for the analysis. If the column and solvents parameters are selected specifically for the analytes and the instrumental equipment is taken into account, it can be assumed that a suitable chromatographic separation is obtained.

References:

1. Martin M., Guiochon, G. Effects of high pressures in liquid chromatography. *J. Chromatogr. A*, 2005; (1-2)7: 16- 38.
2. Liu Y., Lee M.L. Ultrahigh pressure liquid chromatography using elevated temperature. *Journal of Chromatography*. 2006; 1104 (1-2): 198–202.
3. Abidi,S.L. High-performance liquid chromatography of phosphatidic acids and related polar lipids. *J. Chromatogr.* 1991; 587: 193-203.
4. Hearn M.T.W. Ion-pair chromatography on normal and reversed-phase systems. *Adv. Chromatogr.* 1980; 18: 59– 100.
5. Hearn M.T.W. Ion-pair chromatography on normal and reversed-phase systems. *Adv. Chromatogr.* 1980; 18: 59– 100.
6. Renlund S, Erlandsson I, Hellman U, Silberring J, Wernstedt C, Lindström L, Nyberg F: Micro purification and amino acid sequence of β -casomorphin-8 in milk from a woman with postpartum psychosis *Peptides*. 1993;14 :1125-1132.
7. Willard HH, Dean AJ: *Instrumental Methods of Analysis*. CBS Publishers and distributors, 7th edition 1986; 513- 515, 580-604.
8. Connors AK. *A Text Book of Pharmaceutical Analysis*. A Wiley Interscience publication, 3rd edition 2005; 373- 400.
9. Amesham Biosciences: *Reversed Phase Chromatography.Principles and Methods*; 6-8.
10. Dorsey JG, Cooper WT: Retention mechanisms of bonded-phase liquid chromatography. *Anal. Chem.* 66th edition 1994; 857A- 867A.
11. Tanford CW: *Physical chemistry of macromolecules*. 1961.
12. How do I develop an HPLC method? Available from: www.sge.com
13. Snyder LR, Kirkland JJ, Glajch JL: *Practical HPLC Method Development*. 2nd ed. 2001.
14. Sethi PD: *HPLC Quantitative Analysis of Pharmaceutical Formulations*. CBS Publishers & Distributors, first edition 2001.
15. Lindholm J: *Development and Validation of HPLC Methods for Analytical and Preparative Purposes*. Acta Universitatis Upsaliensis. Comprehensive Summaries of Uppsala Dissertations from the Faculty of Science and Technology. 2004;995

16. McCown SM, Southern D, Morrison, B.E. Solvent properties and their effects on gradient elution high performance liquid chromatography. Experimental findings for water and acetonitrile. J. Chromatogr.1986; 352: 493-509.
17. Scott PWR: Liquid Chromatography for the Analyst. New York: Marcel Dekker Inc. 1994:1-10.
18. Stanley BJ, Foster CR, Guiochon G: On the Reproducibility of Column Performance in Liquid Chromatography and the Role of the Packing Density. J. Chrom. A. 1997; 761: 41-51.
19. Christain GD: Analytical Chemistry. John Wiley & Sons Inc, 6th edition 2001.
20. Nledner W, Karsten M, Stelner F, Swart R: Automating Method Development with an HPLC System Optimized for Scouting of Columns, Eluents and Other Method Parameters. Pittcon presentation; 2008.
21. Kar A: Pharmaceutical Drug Analysis. First edition 2001; 565- 592.
22. Scott RPW: Principles and Practice of Chromatography. ChromEd Book Series, 2003; 1-2.
23. Chatwal GR, Anand SK: Instrumental Methods of Chemical Analysis. 5th edition 2004. 1.1-1.3, 2.566-2.2.575.
24. Scott RPW: Principles and Practice of Chromatography. ChromEd Book Series, 2003; 1-2.
25. Chatwal GR, Anand SK: Instrumental Methods of Chemical Analysis. 5th edition 2004. 1.1-1.3, 2.566-2.2.575.
26. USP 32 – NF 27, general chapter 1058, analytical instrument qualification.
27. The fitness for purpose of analytical methods a laboratory guide to method validation and related topics, December 1998.
28. Implementation of QbD Approach to the Analytical Method Development and Validation for the Estimation of Propafenone Hydrochloride in Tablet Dosage Form Monika L. Jadhav and Santosh R. Tambe; Chromatography Research International Volume 2013 (2013), Article ID 676501.
29. Using a Design of Experiments Approach to Develop Fast LC Methods for Automated Scale-up to Preparative Chromatography of Sulfa Drugs; Lori Sandford and Graham Shelver; Fusion AE Method Development Application Note 002-09.
30. Scientific approach for rp-hplc method development: complete review Phani.R.S.Ch, K.R.S. Prasad and Useni Reddy Malu; , IJSID, 2012; 2(6): 218-228.
31. HPLC method development and validation- an overview, Ranjit Singh; J Pharm Educ Res. 2013; 4(1).
32. Burhene J. Bioanalytical Method Validation. J of Anal and Bioanal Tech 3: 7. (2012)
33. Ludwing H. Validaton of Analytical Methods. Agilnet Tech 1-65 (2010)
34. Bansal S, DeStefano A. Key elementslidatin of bioanalytical method validation for small molecules AAPSJ 109-114
35. Rao R, Kalakuntla K, Kumar S. Bioanalytical Method Validation: A quality Assurance Auditor View
36. Eric Reid, Ian D. Wilson. Methodological Survey in Biochemistry and Analysis: Analysis for Drug and Metabolites, Including Anti-infective Agents.20,1-57 (1990)
37. Lang JR, Bolton S. A comprehensive method validation strategy for bioanalytical applications in the pharmaceutical industry: experimental considerations. J Pharm Biomed Anal 9:357-361, (1991)

38. Blume H, Bolton E, Brudny-Kloppel M, Grebe S, Lausecker B, et al, work shop/conference report on EMA draft guidelines on validation of Bioanalytical methods. *Eur J Pharm Sci* 42:300-305 (2011)
39. U.S Department of Health and Human Services Food and Drug Administration Center for Drug Evaluation and Research: bioanalytical method validation
40. European Medicines Agency Guidelines on Bioanalytical Method Validation: Committee for Medicinal Products for Human Use.
41. Rosing H, Man WY, Doyle E, Bult A, Beijnen JH. Bioanalytical liquid chromatographic method validation: A review on Current Practices and Procedures. *J Liq Rel Technol* 23; 329-354, (2000)
42. Wells DA. High throughput Bioanalytical sample preparation: Methods and automation strategies, 1st ed. Amsterdam: Elsevier Science BV (2003)
43. Kazakevich Y, Lobrutto R, HPLC for Pharmaceutical Scientists, 1st ed; John Wiley & Sons, Inc: New Jersey, 281-292. (2007)
44. Said R, Application of New Technology LC-MS/MS for determination of therapeutic drugs, Doctoral degree thesis, Department of Medicine Division of Clinical Pharmacology Karolinska Institute, Stockholm, Sweden, 1-5, (2010)
45. Thurman EM, Mills MS. Solid Phase extraction: Principles and Practice. *Chemical Analysis: A series of monographs on analytical chemistry and its applications*, Winefordner JD, New York Wiley & Sons Inc.147, (1998)
46. Venn RF. Principles and Practice of Bioanalysis, London: Taylor and Francis. xviii, 364. (2000)
47. Shah VP. The History of Bioanalytical Method Validation and Regulation: Evolution of a Guidance Document on Bioanalytical Method Validation. *The AAPS J* 9: E43-E47 (2007).
48. High performance liquid chromatography [Internet]. 2009 [Accessed 2009 Jan 20]. Available from: [en. wikipedia.org/wiki/file:Agilent1200HPLC.jpg.html](http://en.wikipedia.org/wiki/file:Agilent1200HPLC.jpg.html).
49. Renlund S, Erlandsson I, Hellman U, Silberring J, Wernstedt C, Lindström L, Nyberg F: Micropurification and amino acid sequence of -casomorphin-8 in milk from a woman with postpartum psychosis. *Peptides*, 1993; 14: 1125-1132.
50. Willard HH, Dean AJ: Instrumental Methods of Analysis. CBS Publishers and distributors, 7 th edition, 1986; 513-515:580-604.
51. Connors AK. A Text Book of Pharmaceutical Analysis. A Wiley Interscience publication, 3 rd edition, 2005; 373-400.
52. Ahuja S, Ahuja S: High Pressure Liquid Chromatography. *Comprehensive Analytical Chemistry*, Elsevier; 2006.
53. Amesham Biosciences: Reversed Phase Chromatography. Principles and Methods; 6-8.
54. Dorsey JG, Cooper WT: Retention mechanisms of bonded-phase liquid chromatography. *Anal.Chem.* 66th edition, 1994; 857A- 867A.
55. Beckett AH, Stenlake JB: Practical Pharmaceutical Chemistry. CBS Publishers and Distributors, first edition, 2002; 157-171.
56. Snyder, L. R., Kirkland, J. J., Glajch, J. L. (2001). Practical HPLC Method Development. 2nd ed.

57. Patel Riddhiben, M., Patel Piyushbhai, M., & Patel Natubhai, M. Stability indicating HPLC method development—a Review. *International Research Journal of Pharmacy*, 2(5), 79-87.
58. Phani, R. S. Ch, (2012). Scientific approach for HPLC method development: complete review. *International Journal of Sciences Innovations and Discoveries*, 2(6), 218-228.
59. Buffers and Buffering Capacity. 17. Chandra M., Buffers: A guide for the preparation and use of buffers in biological system.
60. Gupta, V., Jain, A. D. K., Gill, N. S., & Gupta, K. (2012). Development and validation of HPLC method-a review. *International Research Journal of Pharmaceutical and Applied Sciences*, 2(4), 17-25.
61. Toomula, N., & Kumar, A. (2012). Development and Validation of Analytical Methods for Pharmaceuticals. *Journal of Analytical & Bioanalytical Techniques*, 2(5), 1-4.
62. Giovanetti, M. H., Nogueira, A., de Oliveira, C. L., & Wosiacki, G. (2012). Chromatography—The Most Versatile Method of Chemical Analysis. InTech: Rijeka, Croatia, 385-425.
63. Gupta, V., Jain, A. D. K., Gill, N. S., & Gupta, K. (2012). Development and validation of HPLC method-a review. *International Research Journal of Pharmaceutical and Applied Sciences*, 2(4), 17-25.
64. Bhagyasree, T., Injeti, N., Azhakesan, A., Rao, U. M. V. (2014). A review on analytical method development and validation. *International Journal of Pharmaceutical Research & Analysis*, 4(8), 444-448.
65. Kumar, V., Bharadwaj, R., Kumar, G. G. S. (2015). An Overview on HPLC Method Development, Optimization and Validation process for drug analysis. *The Pharmaceutical and Chemical Journal*, 2(2), 2015, 30-40.
66. Shrivastava, A., & Gupta, V. B. (2012). HPLC: Isocratic or Gradient Elution and Assessment of Linearity in Analytical Methods. *Journal of Advanced Scientific Research*, 3(2), 12-20.
67. Validation of Analytical Procedures. (2005). Text and Methodology. *International Conferences on Harmonization, Draft Revised, Q2 (R1)*.
68. Validation of Compendial Procedures. (2010). *United State Pharmacopeia, USP 36 NF, 27 (2)*.
69. Bergh, J. J., & Breytenbach, J. C. (1987). Stability-indicating high-performance liquid chromatographic analysis of trimethoprim in pharmaceuticals. *Journal of Chromatography A*, 387, 528-531.
70. Stubbs, C., Kanfer, I. (1990). Stability– indicating High- performance Assay of Erythromycin Estolate in Pharmaceutical Dosage forms. *International Journal of Pharmaceutics*, 3(2), 113-119.
71. MacNeil, L., Rice, J. J., Muhammad, N., & Lauback, R. G. (1986). Stability-indicating liquid chromatographic determination of cephapirin, desacetyl cephapirin and cephapirin lactone in sodium cephapirin bulk and injectable formulations. *Journal of Chromatography A*, 361, 285-290.
72. Bounine, J. P., Tardif, B., Beltran, P., & Mazzo, D. J. (1994). High-performance liquid chromatographic stability-indicating determination of zopiclone in tablets. *Journal of Chromatography A*, 677(1), 87- 93.

73. Fredj, G., Paillet, M., Aussel, F., Brouard, A., Barreteau, H., Divine, C., & Micoud, M. (1986). Determination of sulbactam in biological fluids by high-performance liquid chromatography. *Journal of Chromatography B: Biomedical Sciences and Applications*, 383, 218-222.
74. Garcia, M. S., Sanchez-Pedreno, C., Albero, M. I., & Ródenas, V. (1997). Flow-injection spectrophotometric determination of frusemide or sulphathiazole in pharmaceuticals. *Journal of Pharmaceutical and Biomedical Analysis*, 15(4), 453-459.
75. Shah, A. J., Adlard, M. W., & Stride, J. D. (1990). A sensitive assay for clavulanic acid and sulbactam in biological fluids by highperformance liquid chromatography and precolumn derivatization. *Journal of Pharmaceutical and Biomedical Analysis*, 8(5), 437-443.
76. Abidi, S. L. (1991). High-performance liquid chromatography of phosphatidic acids and related polar lipids. *Journal of Chromatography A*, 587(2), 193-203.
77. Christie, W. W., Gill, S., Nordbäck, J., Itabashi, Y., Sanda, S., & Slabas, A. R. (1998). New procedures for rapid screening of leaf lipid components from *Arabidopsis*. *Phytochemical Analysis*, 9(2), 53-57.

