



EFFECT OF NEEM (AZADIRACHTA-INDICA) EXTRACT ON DIABETIC ALBINO RATS- RATTUS NORVEGICUS

Mehta Priyanka, Singh K.B., Dominic C.J.

Assistant Professor, Professor, Professor

Department of Zoology

Rajkiya Mahavidhyalaya Kanpur U.P. India.

E. mail: pmehta113@gmail.com Contact No: 7983578979

ABSTRACT

The aim of this investigation is to find out possible anti-diabetic mechanism of neem. The experimental model was alloxan treated albino rats and they were treated with aqueous extract of *Azadirachta -indica* (neem) leaves for 14 days. The effects of this extract on blood glucose concentration, serum α - amylase activity, body weight and pancreatic integrity of normal and diabetic albino rats were studied. The results indicate that treatment with extract caused a significant ($p < 0.05$) reduction in fasting blood glucose, serum α - amylase level in diabetic treated rats as compared to diabetic control rats. Histological examination of pancreas of diabetic control rats showed cellular degeneration which appeared to be reversed in the animals following extract treatment. However there was no any significant difference in the serum α - amylase activity of normal treated rats when compared to the normal control.

Conclusion: The neem extract might have anti diabetic properties which may be associated with enhanced islets cells regeneration.

Key words: Albino rats, diabetes, Neem leaves.

INTRODUCTION

Diabetes, caused by inherited and/or acquired deficiency in production of insulin by the pancreas (type 1) or by ineffectiveness of insulin (type 2), is one of the most burdensome and costly chronic disease in the world [2,11,16]. As a strong oxidant, alloxan is widely used in experimental animals to induce insulin-dependent diabetes (type 1). It works by increasing generation of reactive oxygen species from metabolic reactions in the body, together with massive increase of cytosolic calcium concentration, and it can rapidly cause destruction of pancreatic β -cells [4,5,14]. Neem is a well known herbal anti-diabetic agent [1]. Diabetic patients of rural areas usually do not register themselves in diabetic clinics or hospitals because the medical facilities are mainly concentrated in the urban areas. So, with the ever-increasing incidence of diabetes, it's management is becoming costly not only for the individual and his/her family but also for the national health care sector. Now-a-days various medicinal plants are becoming very popular for the treatment of different diseases in our country as well as all over the world. For considering all these constraints, in this experiment we wanted to establish indigenous system of medicine (herbal therapy) as anti-diabetic drugs instead of chemical drugs and rat was used as model of animal.

MATERIALS AND METHODS

The experiment was performed in the Department of Animal Science, M.J.P. Rohilkhand University Bareilly

U.P to evaluate the comparative efficacy of Neem on alloxan induced diabetic rats. Eighteen mixed albino rats (*Ratus norvegicus*) both male and female of body weight between 150 to 200gm were collected from Indian Veterinary Research Institute, Bareilly. All the rats were grouped into three each containing 6. Each group of rats was housed at serene bottomed wire cages arranged in rows and kept in the animal house of this University. Food was given periodically regularl, 100 g/kg. Drinking water was supplied *ad libitum*. The rats were maintained in this condition for a period of two weeks to acclimatize them prior to experimental uses.

Induction of diabetes

Alloxan induced hyperglycemia has been described as a useful experimental model to study the diabetes. After overnight fasting (deprived of food for 16 hours had been allowed free access to water) diabetes was induced in rats by intraperitoneal injection of Alloxan monohydrate (Sigma, St. Louis, Mo USA) dissolved in normal saline at room temperature and a dose of 150mg/kg body weight was injected via intraperitoneal routes for 14 days. The control rats (Group I) received the same amount of normal saline. The animals were allowed to drink 5% glucose solution overnight to overcome the drug-induced hypoglycemia. After 14 days time for the development of diabetes, the rats with diabetes having hyperglycemia (blood glucose range of above 250-300 mg /dl) were considered as diabetic rats (Group II).

Preparation of Neem leaves extract

Fresh neem leaves were collected from locality. Then cleaned and washed with plain tap water and kept in shade in normal room temperature dried in air by spreading them on large trays for 72 hours. Then neem leaves were grinded in to powder form by grinder. Then 250 mg/kg body weight, of neem leave powder for each rat was dissolved in distilled water and administered orally by nasogastric tube for 10 days (Group III)

Blood glucose level was estimated via glucometer and alpha amylase was estimated via methods of Hansawasdi C *et al* & Dineshkumar B *et al* [6,7]. Results were expressed as mean values \pm standard error of mean (Mean \pm SEM) based on five experiments. Significant differences between control and experimental groups were assessed using student's t-test and the results were considered significant at P-values of less than 0.05 ($P < 0.05$).

Histology: The pancreas was immediately rinsed and fixed in Bouin's fluid. Pancreatic scrapes were embedded in paraffin, cut and stained with hematoxylin and eosin (H&E), and graded in a blinded manner. Section cutting was via microtome at 7 μ . Slides were observed under light microscope at 10x and 40x.

RESULTS AND DISCUSSION

Effect on body weight in control and experimental rats

The effects of aqueous extracts of neem (*Azadirachta indica*) leaves, the body weight in normal control, diabetic control and diabetic neem treated rats were shown in Table 1. After 14 days of treatment with Neem leaves, body weights were increased significantly ($p < 0.01$) in comparison with control. In diabetic control group body weight decreased (4.10%). Results of the present study supports partially the earlier findings of Devi *et al.* [5], Pari and Saravanan [11].

Effects on blood glucose level in normal and experimental rats

The effect of alloxan by damaging the beta cells of pancreas interfered glucose metabolism resulting increasing blood glucose level. The effect of aqueous extracts of neem leaves on blood glucose in normal control, diabetic and neem treated rats is shown in the Table 2. After 14 days of treatment with Alloxan the blood glucose level increase significantly ($p < 0.01$) which agreed with that of Zhang [19]. After 14 days of treatment with neem, blood glucose were decreased significantly ($p < 0.01$). The exact mechanism in reducing blood glucose level is not well understood. But the probable cause of reduction of blood glucose might be due to increased uptake of glucose peripherally and increased sensitivity of insulin receptor in case of neem leaves. In accordance to the present finding some author also reported reduction of blood glucose following administration of insulin and neem such as Pari *et al.* [12] Khosla *et al.* [9].

Effects on plasma alpha amylase level in normal and experimental rats

Plasma alpha amylase levels were estimated at the end of treatment period. The results showed that plasma amylase level was significantly ($p < 0.01$) decreased in diabetic rats compared with control. Treatment with neem extract resulted in significant ($P < 0.01$) increase in plasma alpha amylase level when compared with diabetic rats, Ledox *et al* [10], Vats *et al* [17].

Effects on Histology of Pancreas in normal and experimental rats

Figure A, Showing pancreatic section in untreated control Group I, normal pancreatic b-cell islets with normal cellularity and normal histology of pancreas. Whereas Alloxan challenge (Group II) caused destruction of the pancreatic tissue structure, characterized by vacuolization of acinar cells and necrosis, as shown in Figure B. Treatment with neem (Group III) significantly reduced the severity of the histological signs of pancreas injury, as shown in Figure C. Table1. Showing Body weight (gm) changes in Albino rats during the experiment.

S No.	GROUPS	TREATMENT (14 days)	BODY WEIGHT (Mean \pm S D) n=6
1	Group I	Control	170.80 \pm 8.74
2	Group II	Alloxan	149.68 \pm 9.21
3	Group III	Neem leaves extract	158.86 \pm 5.17

Table 2. Showing blood glucose level (m mol/L) in different groups in albino rats.

S No.	GROUPS	TREATMENT (14 days)	BLOOD GLUCOSE (n=6) (Mean \pm SE)
1	Group I	Control	5.65 \pm 0.16
2	Group II	Alloxan	33.64 \pm 0.91
3	Group III	Neem leaves extract	14.26 \pm 0.21

Table 3. Showing blood α - amylase (1U/L) in different groups in albino rats.

S No.	GROUPS	TREATMENT (14 days)	Alpha amylase (Mean \pm SE) n=6
1	Group I	Control	1240 \pm 20.45
2	Group II	Alloxan	1764 \pm 18.11
3	Group III	Neem leaves extract	1300 \pm 30.83

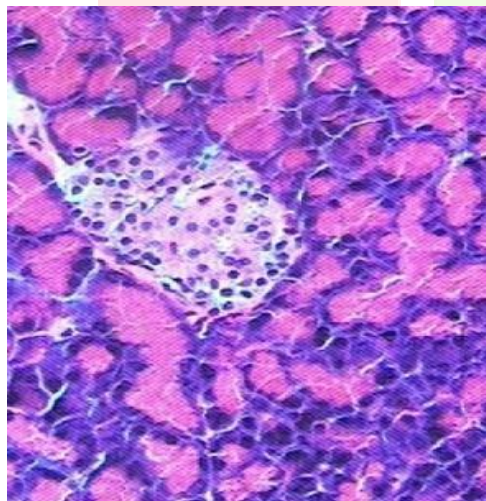


Figure A: Histological micropicture of pancreas of albino rats in Group I

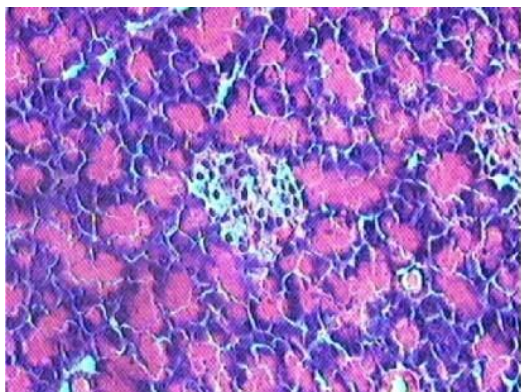


Figure B: Histological micropicture of pancreas of albino rats in Group II

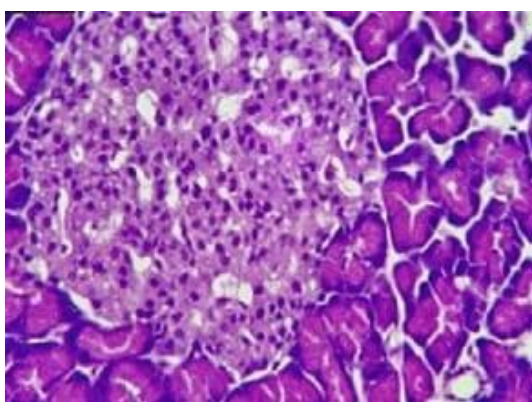


Figure C: Histological micropicture of pancreas of albino rats in Group III

REFERENCES

1. Bopannaet KN, Kannan J, Gadgil S, Balaraman R and Rathod SP (1997) Anti- diabetic and anti-hyperlipaemic effects of neem seed kernel powder on alloxan diabetic rabbits. *Indian Journal of Pharmacology* 29: 162-167.
2. Buko V., Zavodnik I., Kanuka O., Belonovskaya E., Naruta E., Lukivskaya O., Kirko S., Budryn G., Żyżelewicz D., Oracz J (2018) Antidiabetic effects and erythrocyte Stabilization by red cabbage extract in streptozotocin-treated rats. *Food Funct.*9:1850–1863.doi: 10.1039/C7FO01823A.
3. Cao C., Chen M., Liang B., Xu J., Ye T., Xia Z. (2016) Hypoglycemic effect of abandoned *Porphyra haitanensis* polysaccharides in alloxan-induced diabetic mice. *Bioact. Carbohydr. Diet. Fibre.* ;8:1–6. doi: 10.1016/j.bcdf.2016.05.001. [[CrossRef](#)] [[Google Scholar](#)].
4. Danilova I.G., Bulavintceva T.S., Gette I.F., Medvedeva S.Y., Emelyanov V.V., Abidov M.T. (2017) Partial recovery from alloxan-induced diabetes by sodium phthalhydrazide in rats. *Biomed. Pharmacother.* ;95:103–110. doi: 10.1016/j.biopha.2017.07.117. [[PubMed](#)] [[CrossRef](#)] [[Google Scholar](#)]
5. Devi BA, Kamalakkannan N and Prince PSM (2003). Supplementation of fenugreek leaves to diabetic rats: Effect on carbohydrate metabolic enzymes in diabetic liver and kidney. *Phytotherapy Research* 17: 1231-1233.
6. Dineshkumar B., Mitra A., Manjunatha M.(2010) A comparative study of alpha amylase inhibitory activities of common anti-diabetic plants at Kharagpur 1 block. *Int J Green Pharm.*; 4:115-21.]
7. Hansawasdi C., Kawabata J., Kasai T. (2000) α - amylase inhibitors from Roselle (*Hibiscus sabdariffa* Linn.) tea. *Biosci Biotechnol Biochem.*; 64:1041-3.

8. Junod A, Lambert AE, Stauffer W and Renold AE (1969). Diabetogenic action of streptozotocin: relationship of dose to metabolic response. *Journal of Clinical Investigation* 48: 2129.
9. Khosla P, Bhanwra S, Singh J, Seth S and Srivastava RK (2000). A study of hypoglycemic effects of *Azadirachta indica* (Neem) in normal and alloxan diabetic rabbits. *Indian Journal of Physiology and Pharmacology* 44: 69-74.
10. Ledoux SP, Woodley SE, Patton NJ and Wilson LG (1966). Mechanism of nitrosourea induced β -cell damage alterations in DNA. *Diabetes* 35: 866.
11. Pari L and Saravanan G (2000). Antidiabetic effect of cogent db, a herbal drug in alloxan-induced diabetes mellitus. *Comparative Biochemistry and Physiology* 131: 19-25
12. Pari L, Ramakrishnan R and Venkateswaran S (2001). Antihyperglycemic effect of Diamed, a herbal formulation, in experimental diabetes in rats. *Journal of Pharmacy and Pharmacology* 53: 1139-1143.
13. . Ramar M., Manikandan B., Raman T., Priyadarsini A., Palanisamy S., Velayudam M., Munusamy A., Marimuthu Prabhu N., Vaseeharan B. (2012) Protective effect of ferulic acid and resveratrol against alloxan-induced diabetes in mice. *Eur. J. Pharmacol.* ;690:226–235. doi: 10.1016/j.ejphar.2012.05.019. [[PubMed](#)] [[CrossRef](#)] [[Google Scholar](#)]
14. . Shalini T, Siddiqui MR and Baquer NZ (2004). *Trigonella foenum graecum* seed powder protects against histopathological abnormalities in tissues of diabetic rats. *Molecular and Cellular Biochemistry* 266: 151-159.
15. Steel RGD and Torre JH (1960). *Principles and Procedures of Statistics*. McGraw Hill Book Co. Inc., USA.
16. . Szkudelski T. (2001) The mechanism of alloxan and streptozotocin action in B cells of the rat pancreas. *Physiol. Res.* ;50:537–546. [[PubMed](#)] [[Google Scholar](#)]
17. Vats V, Grover JK and Rathi SS (2002). Evaluation of anti-hyperglycemic and hypoglycemic effect of *Trigonella foenum-graecum* Linn, *Ocimum sanctum* Linn and *Pterocarpus marsupium* Linn in normal and alloxanized diabetic rats. *Journal of Ethnopharmacology* 79: 95-100.
18. Yin P., Yang L., Xue Q., Yu M., Yao F., Sun L., Liu Y. (2017) Identification and inhibitory activities of ellagic acid- and kaempferol-derivatives from Mongolian oak cups against α -glucosidase, α -amylase and protein glycation linked to type II diabetes and its complications and their influence on HepG2 cells' viability. *Arab. J. Chem.* doi: 10.1016/j.arabjc.2017.10.002. [[CrossRef](#)] [[Google Scholar](#)]
19. Zhang XF and Tan BKM (2000). Effects of an ethanolic extract of *Gynura procumbens* on serum glucose cholesterol and streptozotocin-induced diabetic rats. *Singapore Medical Journal* 40: 9-13.