



INTERNATIONAL JOURNAL OF CREATIVE RESEARCH THOUGHTS (IJCRT)

An International Open Access, Peer-reviewed, Refereed Journal

PLANT LEAF DISEASE DETECTION USING DEEP LEARNING

Gandham Harish^{*1}, Goli Sai Charan^{*2}, Kotipally Praveen Kumar^{*3}, Dr. B. Laxmaiah^{*4}, Dr. Suwarna Gothane^{*5}

^{*4} Associate Professor, Department of Computer Science and Engineering, CMR Technical Campus, Medchal, Telangana, India

^{*5} Associate Professor, Department of Computer Science and Engineering, CMR Technical Campus, Medchal, Telangana, India

^{*3}JNTUH, Computer Science and Engineering, CMR Technical Campus, Medchal, Telangana, India

^{*4}JNTUH, Computer Science and Engineering, CMR Technical Campus, Medchal, Telangana, India

^{*5}JNTUH, Computer Science and Engineering, CMR Technical Campus, Medchal, Telangana, India

ABSTRACT

Plant disease is an ongoing challenge for smallholder farmers, which threatens income and food security. The recent revolution in smartphone penetration and computer vision models has created an opportunity for image classification in agriculture. Convolutional Neural Networks (CNNs) are considered state-of-the-art in image recognition and offer the ability to provide a prompt and definite diagnosis. In this paper, the performance of a pre-trained ResNet34 model in detecting crop disease is investigated. The developed model is deployed as a web application and is capable of recognizing 7 plant diseases out of healthy leaf tissue. A dataset containing 8,685 leaf images; captured in a controlled environment, is established for training and validating the model. Validation results show that the proposed method can achieve an accuracy of 97.2% and an F1 score of greater than 96.5%. This demonstrates the technical feasibility of CNNs in classifying plant diseases and presents a path towards AI solutions for small holder farmers.

Keywords: Deep learning, Classification, CNN Algorithm, Disease identification.

I. INTRODUCTION

By 2050, global crop production must increase by at least 50% to support the predicted demand. The majority of production currently occurs in Africa and Asia, where 83% of farmers are family run with little to no horticultural expertise. Due to this, yield losses of greater than 50%; as a result of pests and diseases are common.

In classifying crop diseases, the traditional method of human analysis by visual inspection is no longer feasible. The development of computer vision models offers a quick, standardised and accurate solution to this issue. Once trained, a classifier can also be deployed as an application. Easy to use, all that is required is an internet connection and camera- equipped smartphone. Popular commercial apps 'iNaturalist' and 'PlantSnap' demonstrate how this can be executed. Both apps have attained success in not only delivering expertise to users but also in building an interactive online social community.

II. LITERATURE SURVEY

Each year, smartphones continue to become more accessible and affordable. In 2020 there are approximately 5 billion smartphone users in the world. Of this, one billion users are located in India and a further one billion are located in Africa. According to Statista, these figures have consistently risen every year for the last decade. With these facts in mind, it is believed that AI apps will play an important role in shaping the future of farming.

The use of CNNs in plant disease classification has achieved excellent results in recent years. Due to the ongoing emergence of superior results, the multi-layered supervised network has become favourable among researchers. Since the release of LeNet (1988), CNN structures have changed dramatically. Sophisticated functions such as ReLU nonlinearity and overlapping pooling, have become a prevalent feature in modern architecture. Such developments have helped to reduce training time and error rate. Above all, the evolution of architecture has been a necessary demand of large and complex 21st century datasets.

One recent architecture; ResNet (2015) introduced further ground-breaking functions. This incorporates dynamic skip connections as well as heavy batch normalization. This allows training to occur at a much higher learning rate. In 2019, Wu et al., compared ResNet to VGGNet, GoogLeNet, and DenseNet, finding that ResNet produced the best results in classifying grape leaf diseases. In modern research; architectures including AlexNet, LeNet and GoogleNet (2014), are commonly incorporated into the backbone of custom builds. Walleign proposed such a build; based on LeNet, in his research of Soybean disease classification. The model consisted of three convolution layers, one max-pooling layer and a fully connected MLP with Relu activation and achieved a 99% accuracy rate.

This can be performed by adding functions such as zoom, rotate, adding colour changes or contrast changes. The transformed images should, however, reflect the expectations of the validation dataset. When inappropriately applied, a classifier's accuracy can worsen despite the extra data generated. The method of transfer learning has also proved very successful when working with smaller datasets. This involves fine-tuning the weights of a pre-trained model. The ImageNet database is commonly used for this purpose and contains over 14 million images. In 2016, Mohanty et al. exposed these benefits in a study focused on crop disease classification. Here, superior results were recorded using transfer learning (ImageNet), compared to a model built from scratch.

III. PROPOSED SYSTEM

In proposed system aims to evaluate the use of a pre-trained ResNet34 model in training a plant disease classifier. Three plant species will be focused on. These include potato (*Solanum tuberosum*), tomato (*Solanum lycopersicum*) and rice (*Oryza sativa*). For each species the model will be trained to recognize a select number of diseases or state of healthiness. Determine the model's overall effectiveness in classifying diseases using both a validation and test dataset. Compare the model's accuracy when tested with various image sizes and augmentation settings.

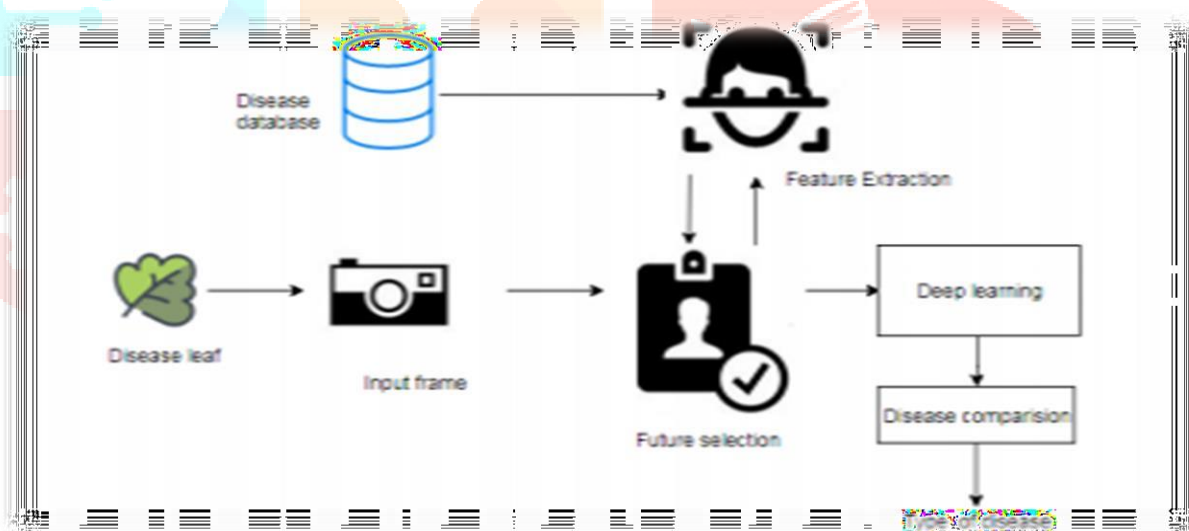


Fig 1: Structure of plant leaf detection and disease recognition system.

METHODOLOGY:

This section describes the steps involved in creating and deploying the classifier. Classification by CNN is divided into three phases which tackle separate tasks. All work involved in this research was completed on one machine.

A. Data Acquisition

All Potato and Tomato imagery derive from 'The PlantVillage Dataset' [35], an open-access repository which contains in total 54,323 images. All Rice imagery originates from the "Rice Diseases Image Dataset" Kaggle dataset [36]. For each species, a select number of classes are chosen, with details viewable in Table II. All images are captured in a controlled environment. Due to this, model bias is expected. To access this, a test dataset containing 50 images, sourced from Google is also established. These images contain additional plant anatomy, in-field background data and varying stages of disease

B. Data Pre-Processing

The dataset is divided into 80% for training and 20% for validation. First, augmentation settings are applied to the training data. These are generated 'on the fly', with each operation carrying a weighted probability of appearing in each epoch. The settings applied include flipping (random), padding mode (reflection) and zoom with crop (scale = (1.0,1.5)). 'Zoom with crop' was later omitted after discovering that it had inappropriately cropped areas of infected leaf. Finally, all images are re-

sized and normalized. Resizing is carried out using a compress function, to 150 x 150. As a pre-trained model is used, the RGB ImageNet statistics are used to normalize. A sample of the final pre-processed images is viewable in Fig.1.

C. Classification by CNN

1. Phase One – Trialling of Image size

Phase one aims to investigate the effect that image size has on model performance. In total, five images sized are tested ranging from 150 x 150 to 255 x 255. To begin, the Resnet34 pre-trained weights are downloaded. As a default of transfer learning, all layers with the except of the final two layers are frozen. These contain new weights and are specific to the plant disease classification task. Freezing allows these layers to be disease separately trained, without back propagating the gradients. In exactly this way, the 1cycle policy is used to train the final layers. With this complete, the remaining layers are released. To aid the fine-tuning process, a plot displaying learning rate vs loss is generated and analysed. From this, a suitable learning is selected, and the model is run. With results recorded, the model is re-created to the additional four image sizes (Table III.). All steps remain consistent in each trial including the learning rate.

TABLE III. IMAGE SIZE TRIAL INFORMATION

Trial	Image Size	No. Epochs	Learner Rate
1	150 x 150	4	1e-05 and 1e-04
2	195 x 195	4	1e-05 and 1e-04
3	224 x 224	4	1e-05 and 1e-04
4	244 x 244	4	1e-05 and 1e-04
5	255 x 255	4	1e-05 and 1e-04

TABLE II. DATASET USED FOR CLASSIFICATION

Species	Class	No. of Images
Potato	Early blight	1000
Potato	Late blight	1000
Potato	Healthy	152
Tomato	Bacterial Spot	2119
Tomato	Leaf Mold	952
Tomato	Mosaic Virus	160
Tomato	Healthy	1000
Rice	Brown Spot	523
Rice	Leaf Blast	779
Rice	Healthy	1000

2. Phase Two – Model Optimisation

Using the most suitable image size, the ResNet34 model is optimised. To further improve the model's performance, additional augmentation settings are added (Fig. 2). Operations include brightness changes (0.4,0.7) and warp (0.5). Next, the final two layers are isolated and trained at the default learning rate. With this complete, fine tuning is performed, running multiple trials to test a series of learning rates and number of epochs.



Fig. 1. Pre-processed images - Phase One augmentation settings = flipping (random), padding mode (reflection)

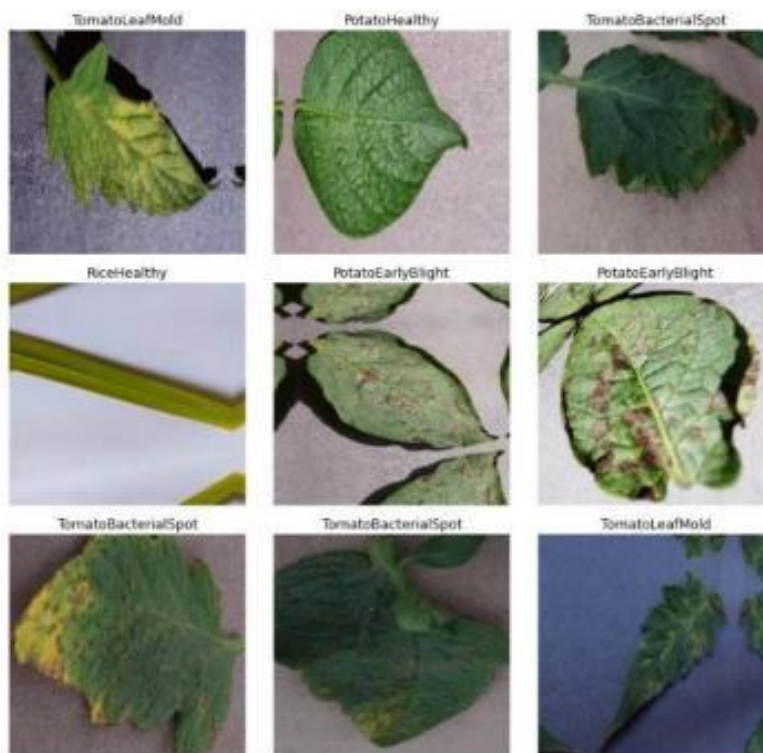


Fig. 2. Pre-processed images - Phase Two augmentation settings = brightness changes (0.4,0.7), warp (0.5), flipping (random), padding mode (reflection)

3.Phase Three – Visualisations

For the purpose of interpretation, a series of visualisations are generated based on the validation and test datasets. Additionally, the model is deployed to create a web application. To achieve this, the completed essential files are stored in a GitHub repository and the model is exported as a pickle file. To deploy the model, the repository is connected to the unified platform; Render. In carrying out this task, the 'Render Examples' GitHub repository was used as a guide.

IV. PROJECT MANAGEMENT

All work associated with this research was carried out during a 12-week period. This project contained several challenging elements which required careful management. One of which, being that both python and image classification were unfamiliar to the researcher. As a starting point, both a Gantt chart and RAID log were created online. Initially these documents were used to define the scope of the project. At this early stage, all tasks dependencies, required resources, risks and issues were also identified and discussed. Both documents were updated and reviewed regularly throughout the project.

Due to unforeseen circumstances, a two-week extension was granted. This extra time was used to execute all tasks, including the lower priority tasks which had previously been identified. The final edit of both the Gantt chart and RAID log can be viewed in the supplementary material file, which has been submitted separately to this project. All programming tasks were carried out on the free cloud service GoogleColab which offers 25GB GPU. The only cost incurred throughout this study was model deployment on Render. The model will be deployed for one month (20/04/2021-23/05/2021).

V. IMPLEMENTAION AND PROPOSED WORK

1) Phase One – Trialling of Image Size

The results of Phase One prove that it is possible to a achieve an accuracy and F1 score of greater than 90% for image sizes 155 x 155 to 255 x 255. As expected, an increase in image size not only improves feature extraction but alsoincreases running time (Table IV.). This initial analysis produced excellent results. As previously stated, the model would be accepted if it reached an accuracy of at least 80%. Even at this early stage, results far exceed the acceptance criteria. To achieve this result, each model was passed a range of learning rates from 1e-05 to 1e-04 and run for 4 epochs. Overall, image size 244 produced the best results including the highest accuracy and F1score. Although literature suggests image size 224 x 224 to be suitable for plant disease classification tasks (10a), this model appears to marginally benefit from an increased image size. For these reasons, image size 244 was chosen for the remainder of this research.

2) Phase Two – Model Optimisation

Prior to fine-tuning, the model attained an accuracy of 0.9465 and F1 score of 0.9359.(Fig. 3) To aid fine-tuning, a plot depicting learning rate (logarithmic scale) v loss was analyzed (Fig. 4). This demonstrates a relatively low loss between learning rates 1e-06 to 1e-04. As the learning rate increases past 1e-04 however, a dramatic increase in loss is experienced. These facts considered, several trails testing learning rate were carried out. A learning rate range of 1e- 05 to 1e-04 produced thebest results. By fine-tuning this hyperparameter, a slight increase in accuracy (1.5%) and F1- Score (1.3%) was accomplished. On the final epoch however, the closing training and validation values indicate that the model may be slightly underfitting (Fig. 5). To correct this, the number of epochs was increased systematically. At Approximately the 10th epoch, there was an evident improvement to the fit of the mode. A final reading presented an overall improvement of 2.8% in accuracy and 3.1 % in F1-score (Fig. 6). As stated earlier, the validation dataset consists of a very specific composition; one leaf and a plain background. For an accurate reading, akin to those stated in this section, use of the classifier should mimic this image layout.

TABLE IV. RESULTS - PHASE ONE
(4 EPOCHS, MAX_LR = SLICE(1E-05,1E-04))

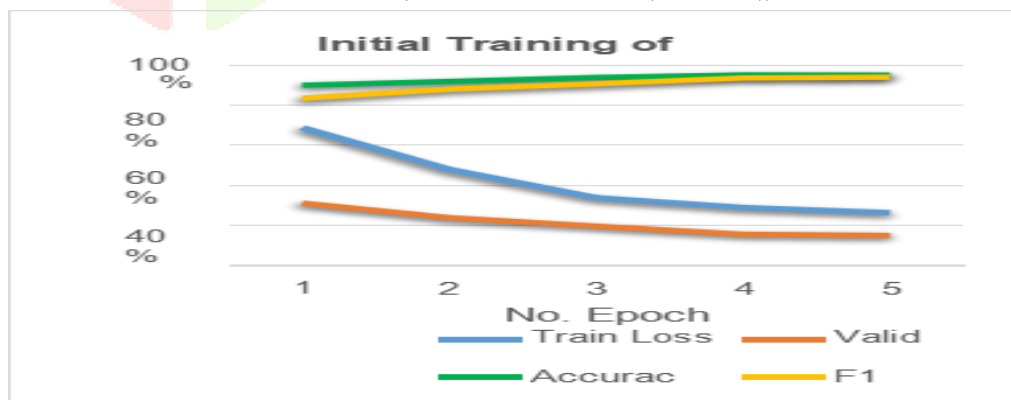


Fig. 3. Training the final layers (lr=1e3)Before fine-tuning the model attained an accuracy of 0.9465and F1 score of 0.9359.

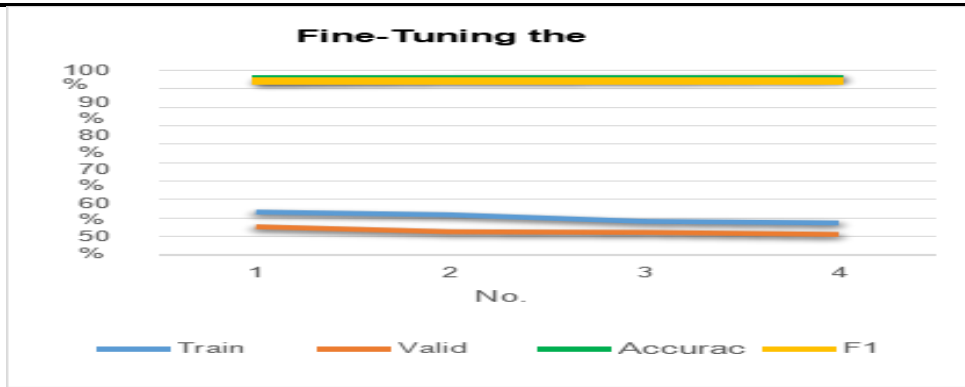


Fig. 4. Fine-tuning the model, learning rate range = $1e-05$, $1e,04$, epochs = 4, Signs of underfitting apparent.

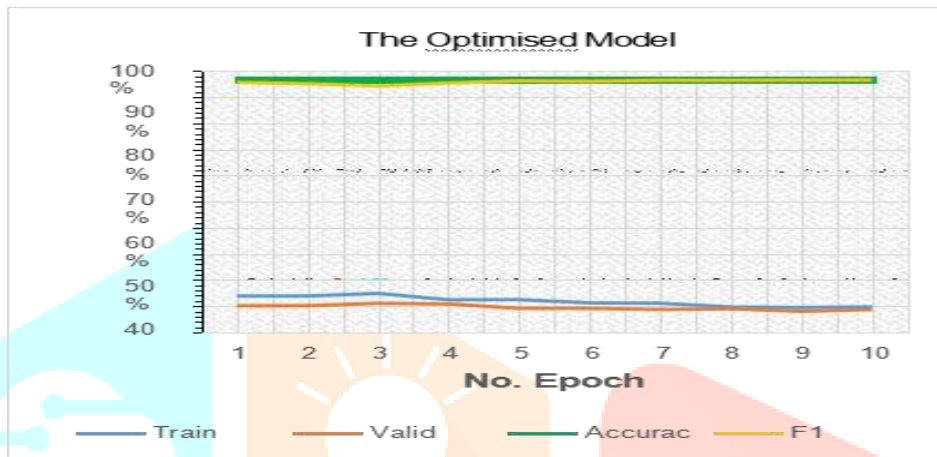


Fig. 5. The fianl optimized model, learning rate range = $1e-05$, $1e,04$, epochs = 10

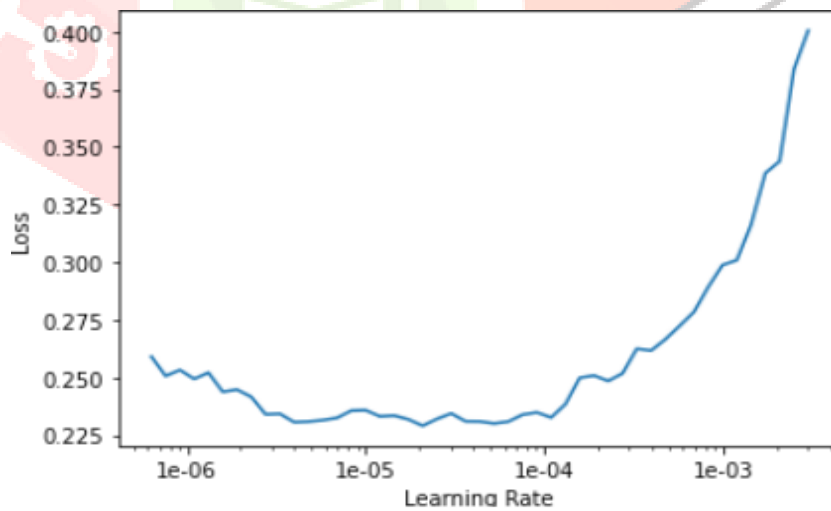


Fig. 6. Learning rate v loss
Used to guide the fine-tuning process.
As the learning rate increases past $1e-04$,
a dramatic increase in loss is experienced.

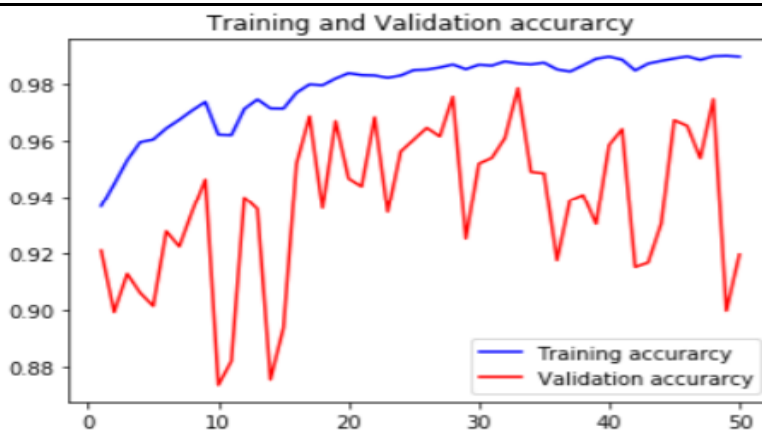


Fig 7: Plot shows training accuracy from 94-99% and validation accuracy from 92-97%.



Fig 8: Plot shows training loss and validation loss

3) Phase Three– Visualisations

An analysis of heat maps reveals the inner workings of the CNN. Colour, shape and texture appear to be important factors in working to extract plant disease features (Fig.7, Fig.8). Colour appears to be especially crucial, helping to clearly differentiate similar diseases, by adding an extra dimension of characterisation. This explains the importance of RGB data to disease classification tasks, as was highlighted earlier [10, 20]. For all three species, the CNN shows effectiveness in recognising features. This is also true for rice disease classes, which contain smaller, and more difficult to distinguish symptoms. The confusion matrix presented in Fig. 10 lists the validation dataset results. Overall, no errors were recorded in any Potato or Tomato classes. Rice as a species, performed poorly, suggesting that there may be an underlying issue with the data. Rice Brown Spot was the highest misclassified class. 13.9% of these images were incorrectly classified as Healthy and a further 9.9% were misclassified as RiceLeafBlast. A clear symptom of brown spot is irregular dark spots. While this may be mistaken for similar lesions in leaf blast, there should be overlapping characteristics with healthy samples. On average, 12.65% of each Rice class were misdiagnosed.

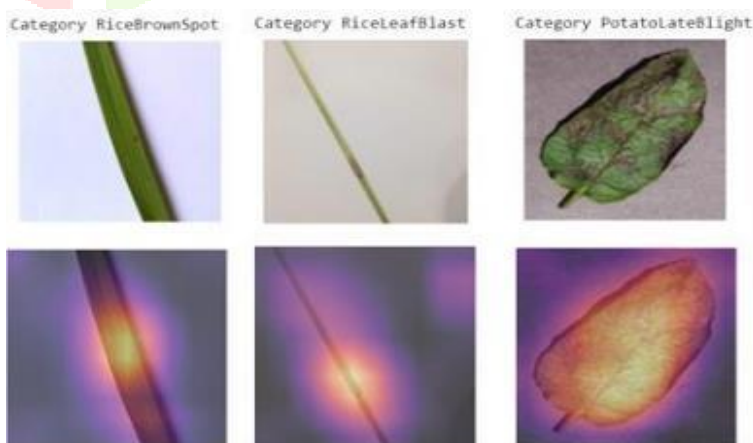


Fig. 7. Heat example 1

To investigate this matter further, the misclassified images were plotted and sorted respective to loss (Fig. 11). A closer inspection reveals that the quality of several images is questionable. Even to the skilled eye, an accurate diagnosis based on these images would be challenging. This data may have been mislabeled or is simply a poor class representation. As such data is not beneficial to the classifier, it should not be included in the training dataset. As expected, the model suffers a significant drop in accuracy when in-field imagery is tested. Out of 50 images, only 44% were accurately diagnosed (Fig. 12). This is due to a combination of factors; which augmentation could not overcome; including new plant anatomy and alternative background data. As the model was not trained on such data, adapting to such circumstances is extremely difficult.

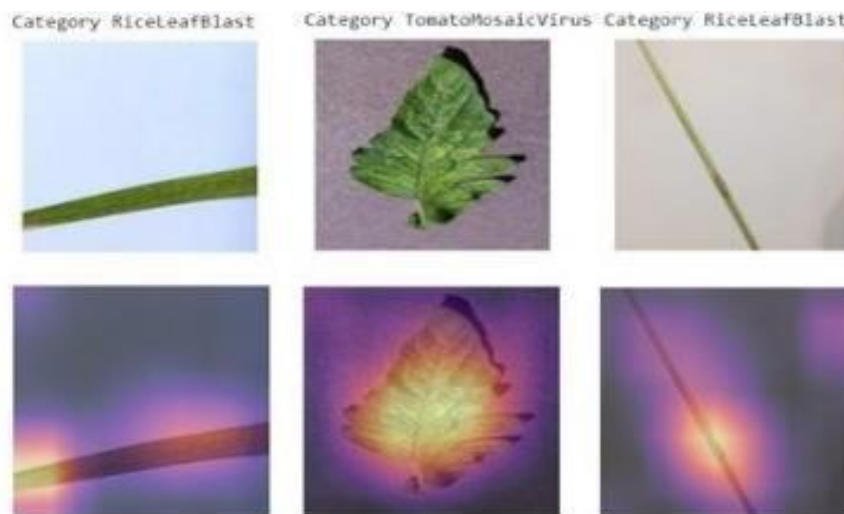


Fig. 8. Heat map example 2

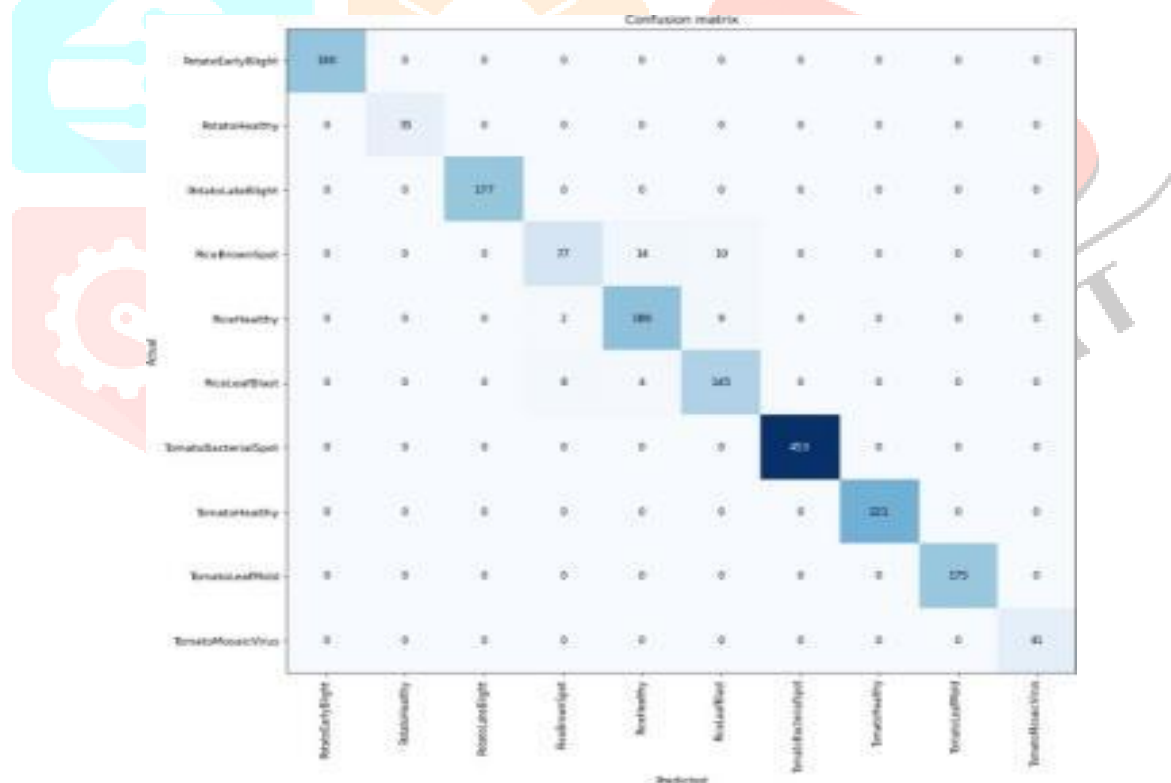


Fig 9: Creation of matrix-Validation dataset

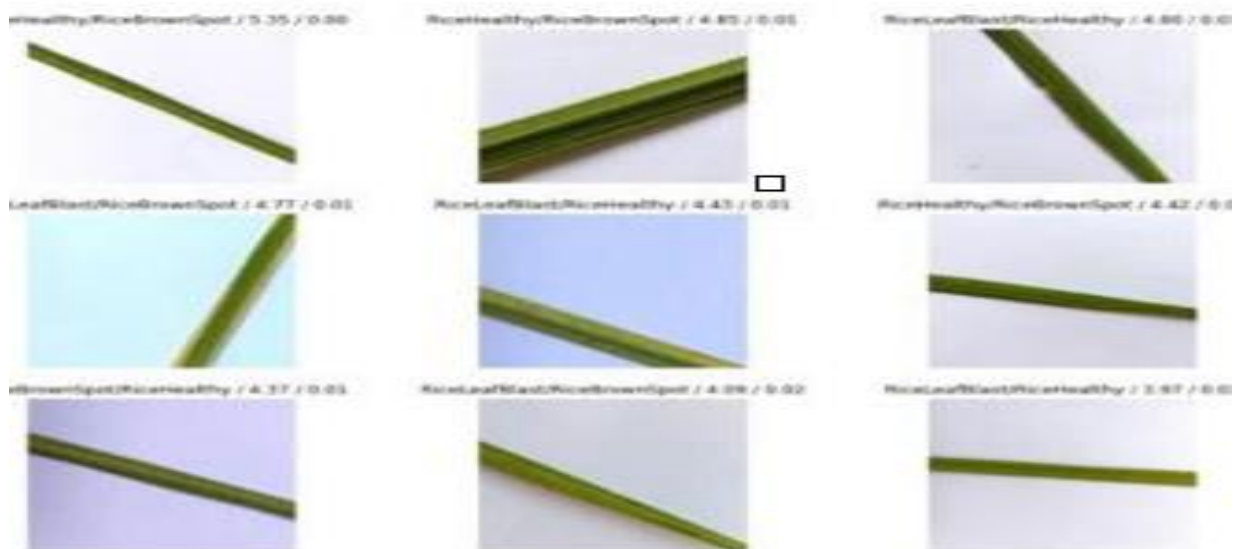


Fig 10: Top losses plotted – validation dataset

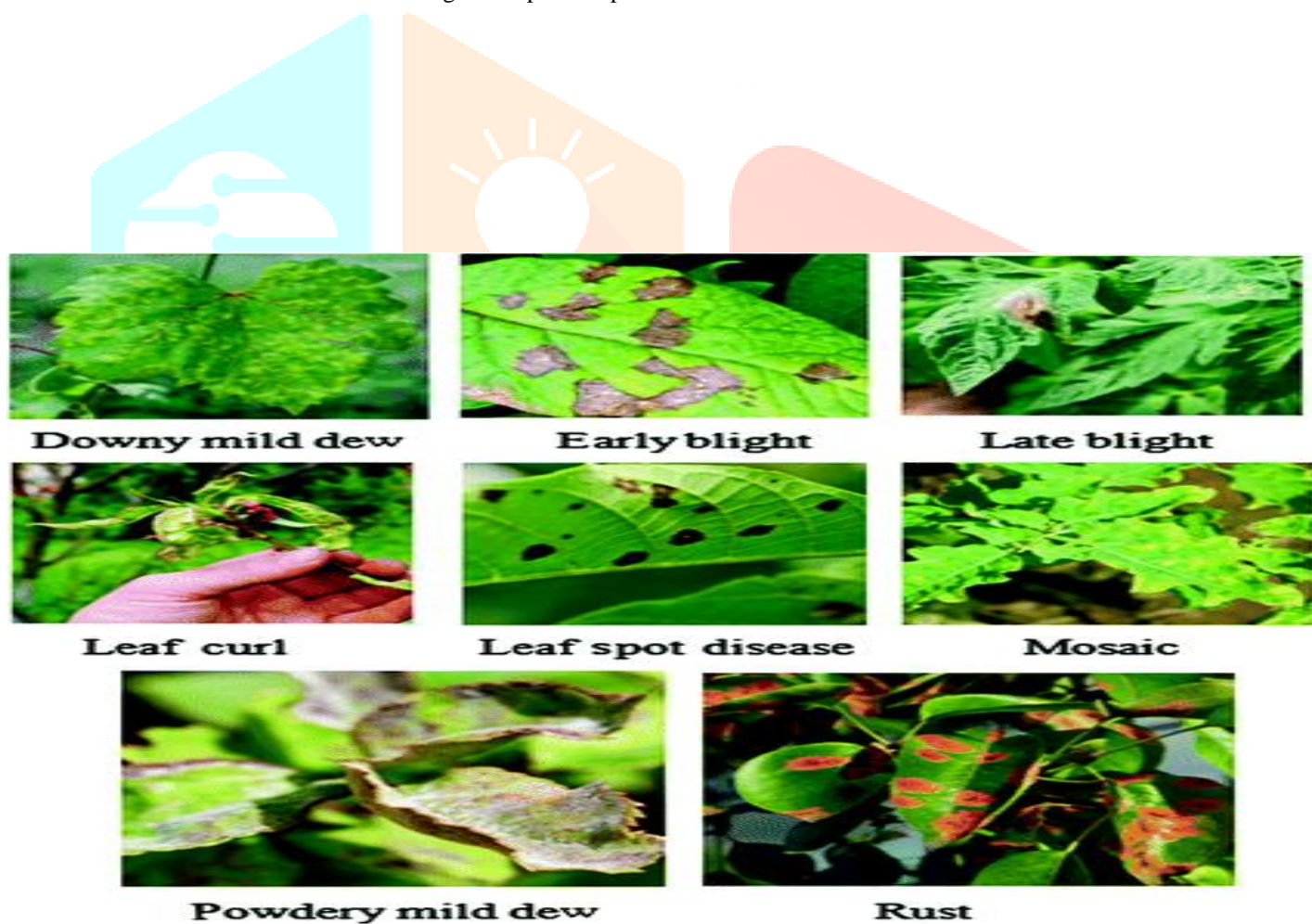


Fig 11: Different leaves show different diseases

Actual	PotatoEarlyBlight	4		1			
	PotatoHealthy	1	1	1			
	PotatoLateBlight	1		4			
	RiceBrownSpot	1				4	1
	RiceHealthy					3	1
	RiceLeafBlast					4	1
	TomatoBacterialSpot			1			3
	TomatoHealthy						3
	TomatoLeafMold						2
	TomatoMosaicVirus						2
	PotatoEarlyBlight	PotatoHealthy	PotatoLateBlight	RiceBrownSpot	RiceHealthy	RiceLeafBlast	TomatoBacterialSpot
	Predicted						


Fig. 13. Confusion matrix – test dataset



Fig 14: Different leaves shows the class and certainty values

RESULT DATASET**Table 1 : Classification report**

<u>Disease</u>	<u>Precision</u>	<u>Recall</u>	<u>F1-score</u>	<u>Support</u>
Alternaria blight	0.78	1.00	0.76	67
Down mild dew	0.92	0.97	0.94	94
Early blight	0.97	0.86	0.91	86
Mosaic	0.90	0.81	0.89	83
Leaf Curl	0.92	0.87	0.90	85
Leaf spot disease	0.97	0.94	0.96	102
Rust	0.99	0.99	0.99	210

Table 2: Result Ratio of Dataset


<u>Dataset</u>	<u>Validation accuracy</u>	<u>Training accuracy</u>	<u>Validation loss</u>	<u>Training loss</u>
Apple	98.23	98.23	0.400	0.20
Tomato	97.53	96.98	0.500	0.24
Grape	98.89	98.92	0.100	0.14
Potato	96.90	96.90	0.51	0.052
Strawberry	84.89	85.80	0.50	0.050
Mixed Dataset	94.87	95.98	0.250	0.15

VI. CONCLUSION

This work provides an authentic notion for detecting the attacked leaf (Grape, Potato and Strawberry etc..) and the farmer who works for produce these fruits gets remedy so that they can enhance the production in agricultural industry. Specialist who works in agriculture department accepts quick disease detection process by image processing technique as a result using deep learning technology touch its milestone within very short time. The transited portion of leaf easily segments and analyzes using CNN model and this model provides best possible result instantly. As a result the farmer who detects plant disease manually can save their time and diminish suspicion on possibilities of wrong detection. The proposed system was developed taking in mind the benefits

of the farmers and agricultural sector. The developed system can detect disease in plant and also provide the remedy that can be taken against the disease. By proper knowledge of the disease and the remedy or using pesticides and natural fertilizers can be taken for improving the health of the plant. The proposed system is based on CNN and gives an accuracy of around 87%. The accuracy and the speed can be increased by use of Google's GPU for processing . The system can be installed on Drones so that aerial surveillances of crop fields can be done.

ACKNOWLEDGEMENT

Apart from the efforts of us, the success of paper depends largely on encouragement and guidelines of many others. We take this opportunity to express our profound gratitude to CMR Technical Campus College Management for motivating us and for providing all the facilities required for this work. We are deeply indebted to Chairman Shri C.Gopal Reddy, Secretary Smt. C. VasanthaLatha, Director Dr.A.Raji Reddy, HOD CSE Dr. K. Srujan Raju, PRC Co-ordinator Dr. SuwarnaGothane, Project Guide Dr. B. Laxmaiah who always has been a constant source of inspiration for us.

REFERENCES

- [1] M. Hunter, R. Smith, M. Schipanski, L. Atwood and D. Mortensen, "Agriculture in 2050: Recalibrating Targets for Sustainable Intensification", *BioScience*, vol. 67, no. 4, pp. 386-391, 2017. Available: 10.1093/biosci/bix010.
- [2] "PlantVillage", [Plantvillage.psu.edu](http://plantvillage.psu.edu), 2020. [Online]. Available: <https://plantvillage.psu.edu/>. [Accessed: 31- Jan- 2020].
- [3] D. Klauser, "Challenges in monitoring and managing plant diseases in developing countries", *Journal of Plant Diseases and Protection*, vol. 125, no. 3, pp. 235-237, 2018. Available: 10.1007/s41348-018-0145-9.
- [4] A.Muimba-Kankolongo, Food crop production by smallholder farmers in Southern Africa. Elsevier, 2018, pp. 23-27.
- [5] J. Boulent, S. Foucher, J. Théau and P. St-Charles, "Convolutional Neural Networks for the Automatic Identification of Plant Diseases", *Frontiers in Plant Science*, vol. 10, 2019. Available: 10.3389/fpls.2019.00941.
- [6] Y.Toda and F. Okura, "How Convolutional Neural Networks Diagnose Plant Disease", *Plant Phenomics*, vol. 2019, pp. 1-14, 2019. Available: 10.34133/2019/9237136.
- [7] Atabay, H. A. 2016b. A convolutional neural network with a new architecture applied on leaf classification. *IJOAB J 7(5):226–331*
- [8] A. Krizhevsky, I. Sutskever and G. Hinton, "ImageNet classification with deep convolutional neural networks", *Communications of the ACM*, vol. 60, no. 6, pp. 84-90, 2017. Available: 10.1145/3065386.
- [9] S. Jadhav, "Convolutional Neural Networks for Leaf Image-Based Plant Disease Classification", *IAES International Journal of Artificial Intelligence (IJ-AI)*, vol. 8, no. 4, p. 328, 2019. Available: 10.11591/ijai.v8.i4.pp328-341.
- [10] X. Zhang, Y. Qiao, F. Meng, C. Fan and M. Zhang, "Identification of Maize Leaf Diseases Using Improved Deep Convolutional Neural Networks", *IEEE Access*, vol. 6, pp. 30370-30377, 2018. Available: 10.1109/access.2018.2844405.