

REMOTE SENSING FOR DISASTER RESPONSE USING FUZZY BASED SOFT CLASSIFIERS AT SUB-PIXEL LEVEL

Sengar S.S.^{a*}, Singh D K P^b and Kumar Ankur^c

^a Associate Professor, JK Lakshmi Pat University, Jaipur, India

^b Director, Shri Ram Group of Colleges, Muzaffarnagar

^c Assistant Professor, Shri Ram Group of Colleges, Muzaffarnagar

ABSTRACT:

Remotely sensed imagery data from satellites have become important tools to response damage due to natural disasters. Due to the ability of remote sensing technology to acquire spectral measurements of damaged areas at various spatial and temporal scales, the extraction of damaged areas become fast and reliable. A strong earthquake with magnitude Mw7.7 that shook the Indian Province of Gujarat on the morning of January 26, 2001, caused widespread appearance of water bodies and channels, in the Rann of Kachchh and the coastal areas of Kandla port. In this work, the impact of using conventional band ratio indices from Landsat-7 temporal images for liquefaction extraction was empirically investigated and compared with Class Based Sensor Independent (CBSI) spectral band ratio while applying noise classifier as soft computing approach via supervised classification. Five spectral indices namely, SR (Simple Ratio), NDVI (Normalized Difference Vegetation index), TNDVI (Transformed Normalized Difference Vegetation Index), SAVI (Soil-Adjusted Vegetation Index) and Modified Normalized Difference Water Index (MNDWI) were investigated to identify liquefaction using temporal multi-spectral images. It is found that CBSI-TNDVI with temporal data has higher membership range (0.968-0.996) and minimum entropy (0.011) to outperform for extraction of liquefaction and for water bodies extraction membership range (0.960-0.996) and entropy (0.005) respectively.

KEY WORDS: Earthquakes, IRS-P6, Temporal Indices Data, Noise Clustering with Entropy (NCE)

1. INTRODUCTION

With the advent of operational remote sensing it is now possible to efficiently and accurately map earthquake induced ground changes including the appearance of water bodies and changes in soil moisture conditions. During the earthquake, strong shaking produced liquefaction in the fine silts and sands below the water table in the Rann of Kachchh. Digital image classification is a fundamental image processing operation to extract land cover information from remote sensing data and it assigns a class membership for each pixel in an image. Often, particularly in coarse spatial resolution images, the pixels may be mixed containing two or more classes. Soft classification methods may help in quantifying uncertainties in areas of transition between various types of land cover. Fuzzy

classifications may be beneficial where a mixed pixel may be assigned multiple class memberships.

Till date many researchers in remote sensing field have applied time series indices to study cropping pattern. Nianlong *et al.*, (2010), applied time series NDVI data to identify land use classification. Wardlow and Egbert, (2008), used a hierarchical crop mapping to classify multi-temporal NDVI data. Lucas *et al.*, (2007), studied the use of time-series Landsat sensor data using decision rules based on fuzzy logic to discriminate vegetation type. Based on past research works it indicates that researchers have used multi-spectral, hyper-spectral as well as microwave data for specific land use/land cover (LULC) identification while using temporal data sets with importance of different indices.

Kumar and Roy, (2010), has worked with add on bands in multi-spectral dataset of Worldview -2. This work has proposed class based sensor independent spectral band ratio NDVI approach for extracting a crop at a time. Ramakrishnan *et al.*, (2006), map the earthquake induced liquefaction around the Bhuj, by calculating the absorption of energy in the NIR and SWIR region of electromagnetic spectrum. Saraf *et al.*, (2002), used picture colour transformation of IRS-1D band 4 data to map liquefaction of Bhuj. Mohanty *et al.*, (2001) and Singh *et al.*, (2001), used image differencing to find liquefaction.

A lot of work has been done in the field of single class extraction through time series multi-spectral data but while going through the literature it has been identified that to find liquefaction using various indices with noise classifier has not been explored in the past. In this study it has been tried to identify liquefaction using temporal indices.

2. INDICES AND CLASSIFICATION APPROACHES

For generating band ratio data, it is important to know various types of band information present in multi-spectral data. Based on spectral information of remote sensing data, the user has to decide which spectral bands of data are to be used in different band ratio functions and require expert knowledge.

2.1 CBSI Spectral Band Ratio

To overcome the need for expert knowledge about remote sensing data, in this work a CBSI spectral band ratio has been proposed in eq. (1).

$$\text{CBSI spectral band ratio} = \min, \max^{f\{(g_{1, \dots, n})_{r,c}\}}_k \quad (1)$$

where; g is grey value, r and c are row and column of a class location respectively, n denotes number of bands, k denotes number of classes.

Here, the user has to provide the location of a class in the form of row and column or latitude and longitude. Based on class location, spectral information as grey value from all the bands will be read and using minimum, maximum operators to find out which bands have minimum, maximum gray values to establish maximum range in spectral difference. Then these bands are used in indices by setting that band having minimum grey value as well as maximum grey value band. Here a simple condition is also applied that if indices values were negative then replace it with zero value. This enhances the concerned class of interest and only requires geo-location of a class, while spectral remote sensing data information is not required.

2.2 Noise Classifier

Dave (1991), introduced concept of 'Noise Cluster' such that noisy data points may be assigned to the noise class. The approach is developed for objective functional type (fuzzy K-means) algorithms and its ability to detect 'good' clusters amongst noisy data is demonstrated. The classification performance is evaluated by criteria such as the accuracy and reliability. These criteria cannot show the exact quality and certainty of the classification results. This study proposes the noise classifier, as a special criterion for visualizing and evaluating the uncertainty of the results. The class membership matrix μ_{ij} for a class and $\mu_{i,c+1}$ for noise present is given by;

$$\mu_{i,j} = (d^2_{ij}, d^2_{ik}, \delta, m) \quad (2)$$

$$\mu_{i,c+1} = (\delta, d^2_{ij}, m) \quad (3)$$

where $1 \leq k \leq c$, $1 \leq j \leq c$ and $\delta > 0$, any float value greater than zero. The objective function, which satisfies this requirement, may be formulated as;

$$U(\mu_{ij}|d) = \left[\sum_{i=1}^N \sum_{j=1}^c \mu_{ij} d_{ij} + \sum_{i=1}^N (\mu_{k,c+1})^m \delta \right] \quad (4)$$

and $1 < m < \infty$, (any constant float value more than 1), $N = \text{row} * \text{column}$ (image size) and d_{ij} = stands for j^{th} mean class factor;

$$d^2_{ij} = \|X_i - v_j\|_A^2 = (X_i - v_j)^T A (X_i - v_j)$$

v_j = Mean vector for each class.

In this study, it has been presented how various indices and band ratios along with a special form of noise classifier; impact the accuracy of the temporal liquefaction classification. For this the automatic land cover mapping approach (ALCM) module from, SMIC: Sub-Pixel Multi-Spectral Image Classifier package (Kumar *et al.*, 2010) has been used. The ALCM module has capability to process multiple multi-spectral images

for single land cover class extraction at sub-pixel level using supervised approach.

2.3 Entropy Analysis

The uncertainty affects the extracted information quality in remote sensing and propagates in processing, transmitting and classification processes. Usually, the classification performance is evaluated by criteria such as the accuracy and reliability. These criteria cannot show the exact quality and certainty of the classification results. This study uses the entropy, as a special criterion for visualizing and evaluating the uncertainty of the results. To have a global measure of uncertainty (fuzziness) for the whole dataset, the mean index of fuzziness (IF) can be computed from Eq (5);

$$IF = \frac{\sum_i^c IF_i}{c} \quad (5)$$

where IF values range from 0.0 (no uncertainty) to 1.0 (complete uncertainty). Thus, these measures may allow depiction of the uncertainties in the datasets, which can either be a classified image (i.e. soft classification outputs) or the reference data (Ibrahim *et al.* 2005, Hamid and Hassan 2006).

2.4 Test Data and Study Area

The remote sensing data used for this work was Landsat-7 satellite multispectral two date's (Jan'8, 2001 and Feb'9, 2001) temporal data from ETM+ sensor. To create multispectral data 6 spectral bands {blue (0.45-0.515 μm), green (0.525-0.605 μm), red (0.63-0.69 μm), near infrared (0.75- 0.90 μm), mid infrared1 (1.55-1.75 μm) and mid infrared 2 (2.09-2.35 μm); are used.

The test site for this work has been identified as Rann of Kachchh (Lat 23°22'N-23°38'N and Long 69°52'-70°33'E) in Gujarat state of India for liquefaction identification. To separate liquefied area with pre-earthquake existing water bodies with boundary coordinates Lat 23°13'N-23°16'N and Long 70°05'E-70°09'E was taken.

3. METHODOLOGY

There has been requirement for identifying only one class that is, liquefaction, in Kachchh area. Keeping this in mind, the work was divided into four steps as shown in figure 1.

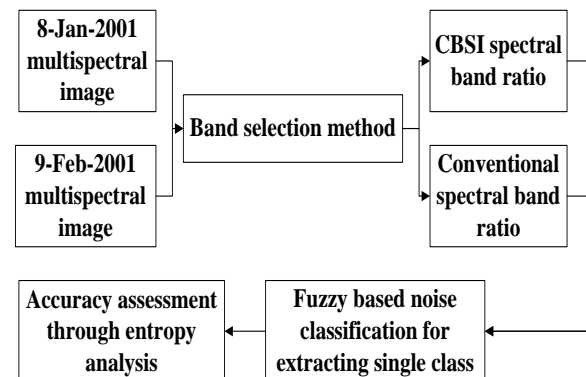


Figure 1, Methodology adopted

Firstly both pre and post earthquake Landsat-7 multispectral images were identified. To create the models of all band ratio indices, ERDAS Model Maker was used. Initially, an attempt have been made with conventional spectral band ratio temporal indices, later on, CBSI spectral band ratio indices from equation (1), applied on study area to identify liquefaction. The noise

classifier was applied as supervised classifier to extract single class, liquefaction as well as water bodies separately. Finally the accuracy assessment through entropy analysis using equation (5) was done for both liquefaction and water bodies.

4. RESULTS AND DISCUSSION

This study mainly focuses on identifying the areas in and around Kachchh region with abnormal increase in liquefaction after the Bhuj earthquake in 2001. The basic principle behind using the satellite images in mapping the liquefaction changes is that electromagnetic spectrum absorbed by liquefied soil for different indices is different. Different indices help to distinguish reflectance of soils by its moisture content. The one class of interest, namely, liquefaction was studied for discrimination with background and especially separates it with water bodies in the study area.

Temporal Indices	For liquefaction identification			
	8-Jan'01 indices value	9-Feb'01 indices value	Minimum membership value	Entropy
CBSI-NDVI	0	0.847	0.901	0.039
CBSI-SAVI	0	0.843	0.929	0.028
CBSI-SR	0.020	0.023	0.964	0.028
CBSI-TNDVI	0	0.960	0.968	0.011
Conv.-SR	0.262	0.223	0.988	0.028
Conv.-MNDWI	0	0.667	0.917	0.183

Table 1. Temporal indices results for liquefaction identification

Temporal Indices	For water body identification			
	8-Jan'01 indices value	9-Feb'01 indices value	Minimum membership value	Entropy
CBSI-NDVI	0.639	0.796	0.933	0.056
CBSI-SAVI	0.639	0.792	0.894	0.022
CBSI-SR	0.039	0.031	0.980	0.011
CBSI-TNDVI	0.905	0.949	0.960	0.005
Conv.-SR	0.564	0.482	0.921	0.022
Conv.-MNDWI	0.603	0.741	0.913	0.044

Table 2. Temporal indices results for water body identification

The NDVI, SAVI, SR and TNDVI band ratio techniques were applied on both images using CBSI spectral band ratio approach, while SR and MNDWI were used conventional method to find out liquefaction as well as water bodies. The region behind it is CBSI-MNDWI behaves like CBSI-NDVI; and conventional NDVI, SAVI and TNDVI gives negative values for liquefaction identification. Only SR technique was used as CBSI as well as conventional approach because it use direct ratios between band 3 and band 7, and ratios between band 3 and band 4 respectively.

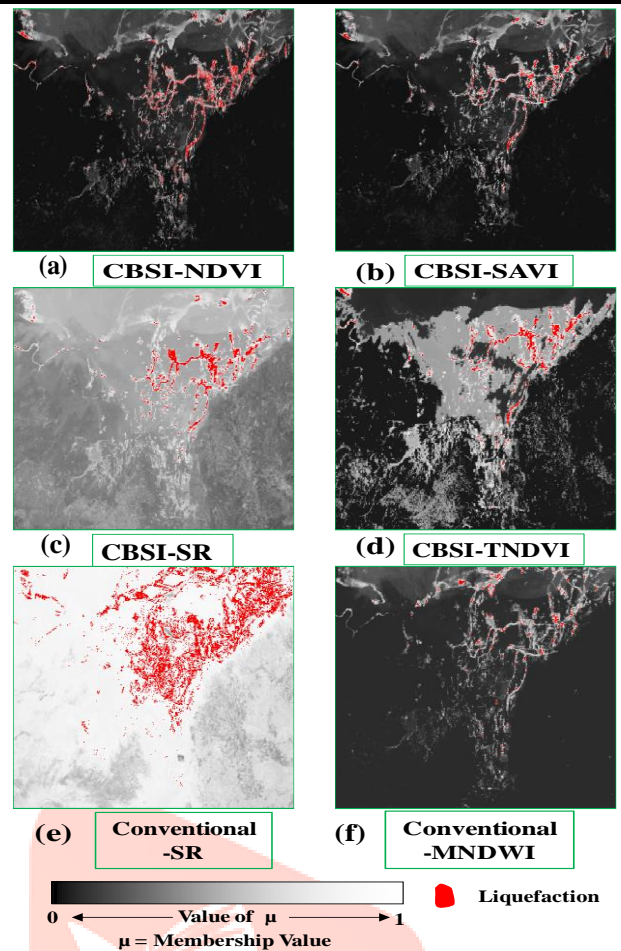


Figure 2. Different classified output for liquefaction identification

It was observed from table 1 for liquefaction identification, the temporal indices values of CBSI-SR and conventional SR shows higher correlation and CBSI-TNDVI shows least correlation. The CBSI-TNDVI shows least entropy (0.011) for liquefaction identification. As water bodies not changed in this period (Jan'8, 2001 and Feb'9, 2001) therefore the temporal indices values for water bodies not changed very much. For water bodies identification it is observed from table 2 that all temporal indices shows good results but CBSI-TNDVI shows least entropy (0.005). The classified outputs are shown in figures 1 and 2 for identifying liquefaction as well as water bodies respectively.

5. CONCLUSION

In this study, effect of different indices (CBSI and conventional) has been studied for extracting liquefaction as well as water bodies in the study area. From table 1, it was observed that temporal indices from NDVI, SAVI and TNDVI using CBSI method and conventional MNDWI show less correlation for liquefaction, implying these are outperform to identifying liquefaction. The results indicate from classified output and temporal indices values that CBSI-TNDVI is best for liquefaction (Entropy 0.011 and membership range 0.968-0.996) and water body (Entropy 0.005 and membership range 0.960-0.996) identification because it shows least correlation and higher membership value. The less membership range indicates here that the one class of interest can easily identify without merged with other class and less entropy indicate here that less uncertainty in one class of interest. This proposed technique will be suitable to identify liquefaction area in post earthquake studies in a short span of time.

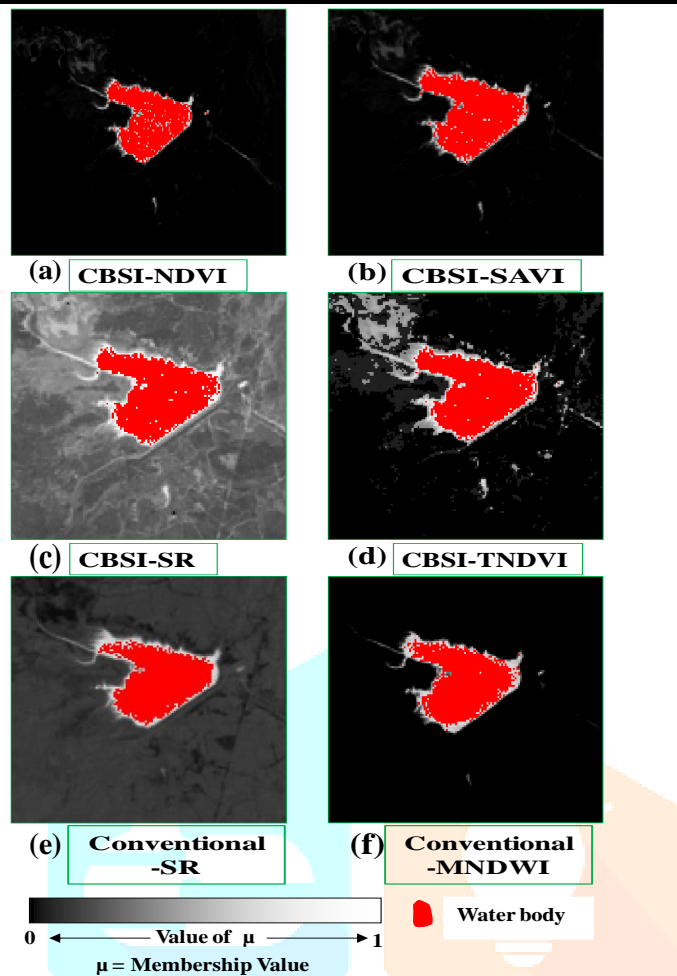


Figure 3. Different classified output for water-body identification

6. REFERENCES

- Dave R. N. 1991. Characterization and detection of noise in clustering, *Pattern Recognition Letters*, 12, pp. 657-664.
- Hamid D. and Hassan G. 2006. Measurement of uncertainty by the entropy: application to the classification of MSS data, *International Journal of Remote Sensing*, 27(18), pp. 4005-4014.
- Ibrahim M.A., Arora M.K. and Ghosh S.K. 2005. Estimating and accommodating uncertainty through the soft classification of remote sensing data, *International Journal of Remote Sensing*, 26, pp. 2995-3007.
- Kumar A., Ghosh S.K. and Dadhwal V.K. 2010. ALCM: Automatic land cover mapping, *Journal of Indian remote sensing*, 38, pp. 239-245.
- Kumar A. and Roy P. S. 2010. Effects on specific crop mapping using worldview-2 Multispectral add on bands-A soft classification approach, *Geospatial World Forum*, Hyderabad.
- Lucas R., Rowlands A., Brown A., Keyworth S. and Bunting P. 2007. Rule-based classification of multi-temporal satellite imagery for habitat and agricultural land cover mapping, *ISPRS Journal of photogrammetry and Remote Sensing*, 62(3), pp. 165-185.
- Mohanty K.K., Maiti K. and Nayak S. 2001. Monitoring water surges, *GIS Development*, 3, pp. 32-33.
- Nianlong H., Tingting L. and Chuang L. 2010. Using NDVI data for malaysia land use classification, *ICACC 2010*, pp. 187-190.

Ramakrishnan D., Mohanty K.K. and Nayak S.R., 2006. Mapping the liquefaction induced soil moisture changes using remote sensing technique: an attempt to map the earthquake induced liquefaction around Bhuj, Gujarat, India, *Geotechnical and Geological Engineering* 24, pp. 1581-1602.

Saraf A.K., Sinvhal A., Sinvhal H., Ghosh P. and Sarma B. 2002. Satellite data reveals 26 January 2001 Kutch Earthquake induced ground changes and appearance of water bodies, *International Journal of Remote Sensing*, 23(9), pp. 1749-1756.

Singh R.P., Bhoi S., Chandresh, Sahoo A.K. and Kanwar R. 2001. Changes in ocean after the Gujarat earthquake, *GIS @ Development*, 5(3), pp. 35-36.

Wardlow B.D. and Egbert S.L. 2008. Large-area crop mapping using time series MODIS 250 m NDVI data, An assessment for the U.S. Central Great Plains, *Remote Sensing of Environment*, 112, pp. 1096-1116.